

Planning your quilt and want to see what it will look like in the fabric you just got from your LQS? You don't need to purchase a super expensive program. Try this...and the best part it's FREE!!! *** *Please note this guide is update to date as of GIMP Version 2.6. Some aspects of this guide could become different or even irrelevant in the future as the program version changes.*

Items Needed:

- Basic knowledge of computers
- Be comfortable installing a new program
- Ability to go to the manufacturer's website to find the fabric you're interested in using.
- Download and install GIMP (GNU Image Manipulation Program)
 - <http://downloads.sourceforge.net/gimp-win/gimp-2.6.11-i686-setup-1.exe>
- Download graph paper templates (depending on the type of quilt you are using)
 - Main Site: <http://incompetech.com/graphpaper/>
 - From this page you can click on the different patterns available
 - Simple Squares - <http://incompetech.com/graphpaper/custom/centimeter-black.pdf>
 - Save this PDF to your desktop
 - Split Squares - <http://incompetech.com/graphpaper/axonometric/>
 - This is used for more complex blocks. Each square is separated into quarters. User the below settings to get the page I describe.
 - Save this PDF to your desktop

Set document units to: ☐ Inches or ☐ Centimeters

Not the graph paper you're looking for? Check out our many other free graph/grid paper styles from our main page [here](#).

PDF Document Size: ☒ 8.5 x 11 inches
☐ 11 x 17 inches
☐ A4 (21 x 29.7cm)
☐ A3 (29.7 x 42cm)
☐ Other

Minimum Border: inches

Line Weight: points
(0.05 is very fine; 0.5 is average; 10 is very very large)

Square Side Length: inches

Verticals: ☒

Horizontals: ☒

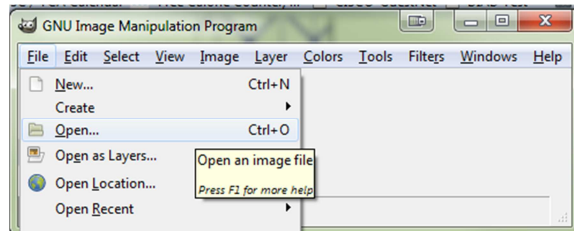
Grid Color: ☒ Black ☐ Light Grey ☐ Light Blue
☐ Red ☐ Blue ☐ Green

#

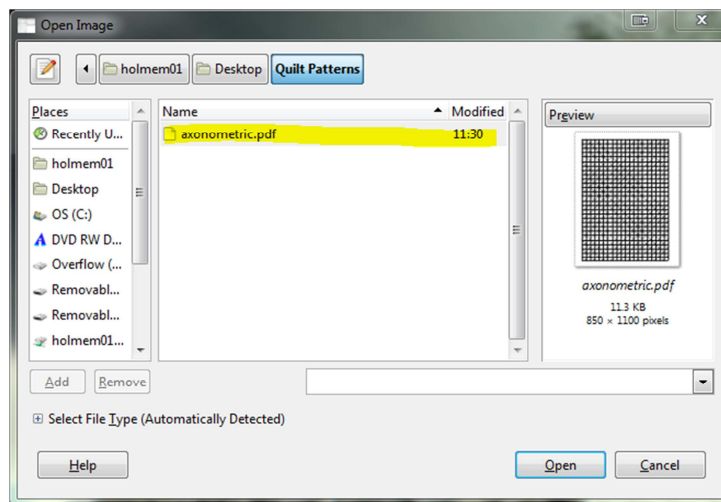
- Next navigate to your fabric manufacturer's website and locate your fabric collection. (Please note if you are not using a current fabric that you might not be able to find that particular fabric on the manufacturer's website.

1. Setting up your templates (You should only have to follow these steps once)

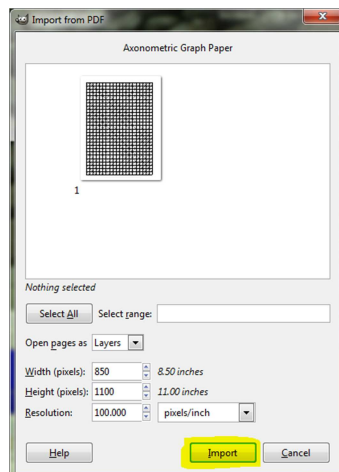
- a. Open GIMP
- b. Click on FILE – OPEN



- c. In the “Open Image” window you will navigate to where you saved your PDF file and double click on the file to open it

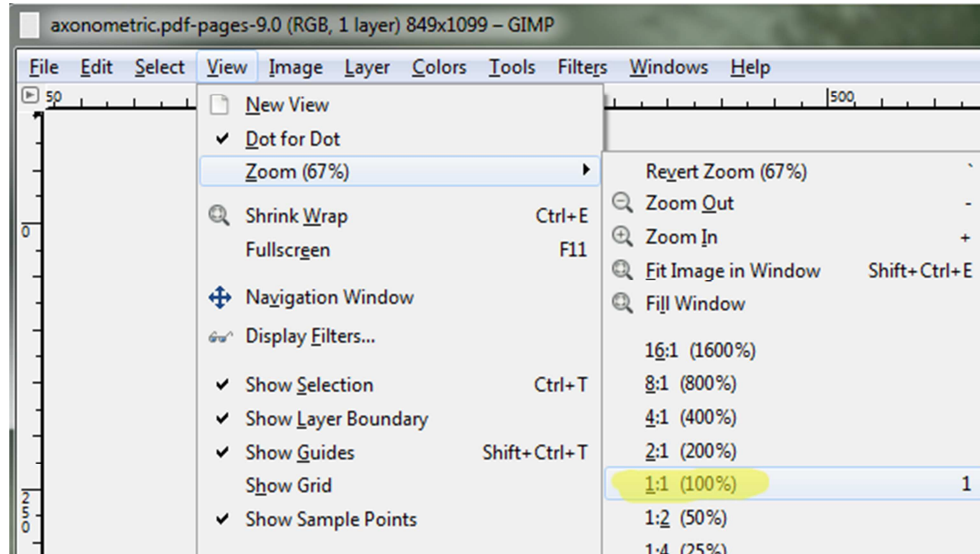


- d. You will then be given a prompt that asks you about importing the file. Make no changes to this screen. Simply press the IMPORT button

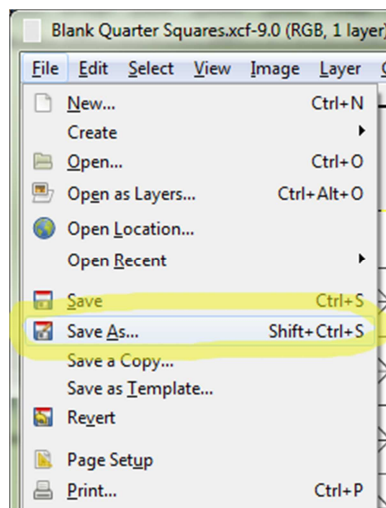


- e. GIMP will then open the PDF

- f. Now go to VIEW – ZOOM – 1:1 (This will change the size to 100% however you can change the zoom to any size you wish)



- g. Now press CTRL+S to save your blank template.
 i. You can name this anything you like. I normally put something that “Blank Quarter Squares”
 h. Once that is done you will want to RE-SAVE this picture,
 i. Choose FILE-SAVE AS



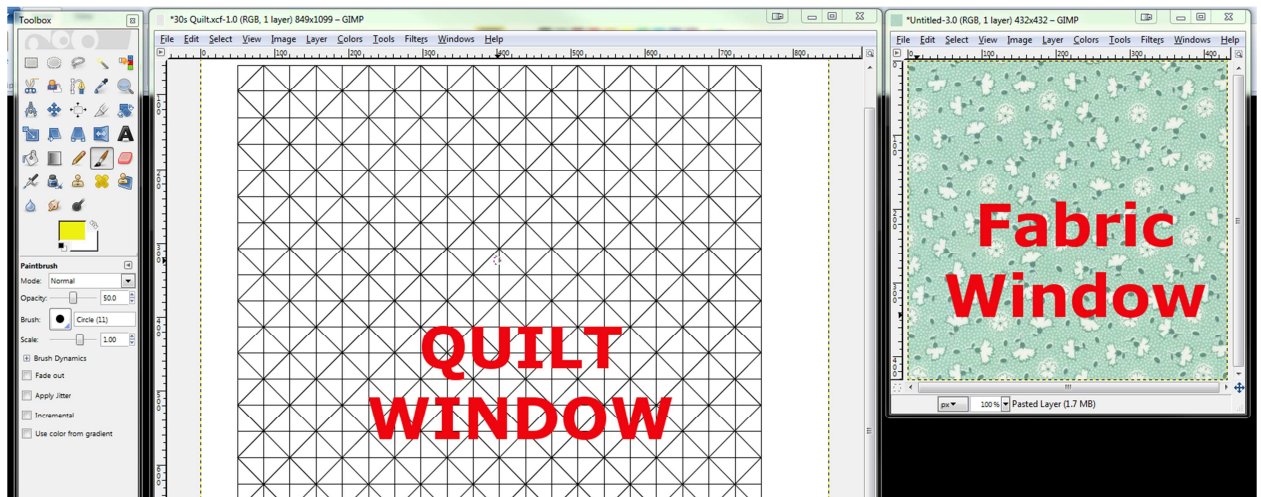
- j. this time you will want to give it the name of your new project
 i. For my example I named my project “30s Quilt”
 k. Now your template has been setup and you’re ready to begin designing your quilt!

2. Designing your quilt

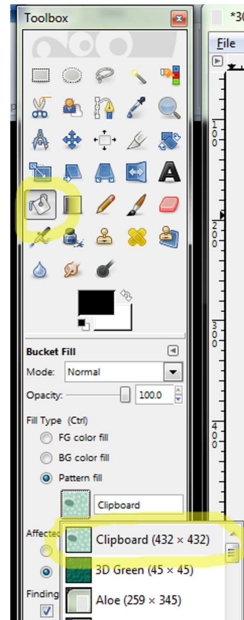
****I would like to preface this section with the following statement. The next part of this will be mostly cutting and pasting. It may seem awkward at first, however after your first quilt I believe you will find this goes extremely quick.*

****Also manufactures websites are all different; you may find a website that gives you all of the small pictures of fabric on one page, others you might have to click on different pages to find the fabric you are looking for. I cannot take each website into account so I am leaving it up to the end user to figure that part out. ☺*

- a. Navigate to the website you have found that have pictures of your fabric. Right click on the fabric and choose “Copy”
- b. Next switch to the GIMP program
- c. Press SHIFT+CTRL+V
- d. An additional window will appear with the image you copied in it.



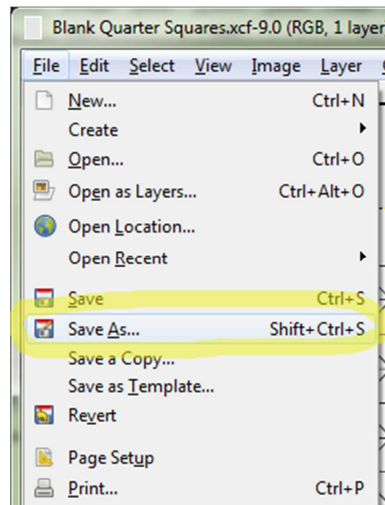
- e. Click on your FABRIC window press CTRL+C
- f. Now click on your QUILT window
- g. Click on the “Paint Bucket” icon
- h. Choose the “Pattern Fill” option
- i. Then click on the picture to the left of “Pine”
- j. In the pop out window scroll to the top and choose “Clipboard”
 - a. It should look like the fabric you want to use.



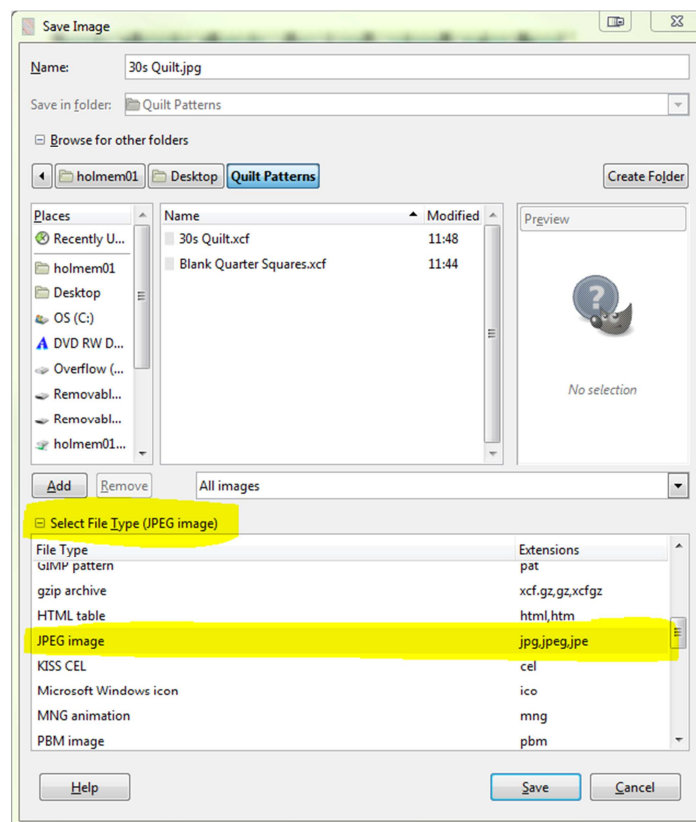
- k. Now you can click on the square in your quilt you want to fill.
 - l. When you are ready to change fabrics navigate to the new fabric in your web browser.
 - m. Right click on the fabric and copy it
 - n. Return to your Fabric Window
 - o. Press CTRL+V
 - p. Then press CTRL+C
 - q. Return to your quilt window, when you look at your fill pattern it should now be changed to your new fabric.
 - r. Fill your quilt with that fabric.
 - s. Rinse and repeat steps l-r until you have a completed quilt.
3. Your finished quilt design
- a. Once you have finished your quilt press CTRL+S to save it.
 - b. If you want to export it to a JPEG image please follow these steps
 - c. If you want to, you can crop your picture so it only shows the quilt and not the rest of your blank grid. To do this press the "Crop Tool"
 - d. Select your quilt
 - e. Then click once in the middle of your selection to crop it.



- f. Then go to FILE-SAVE AS

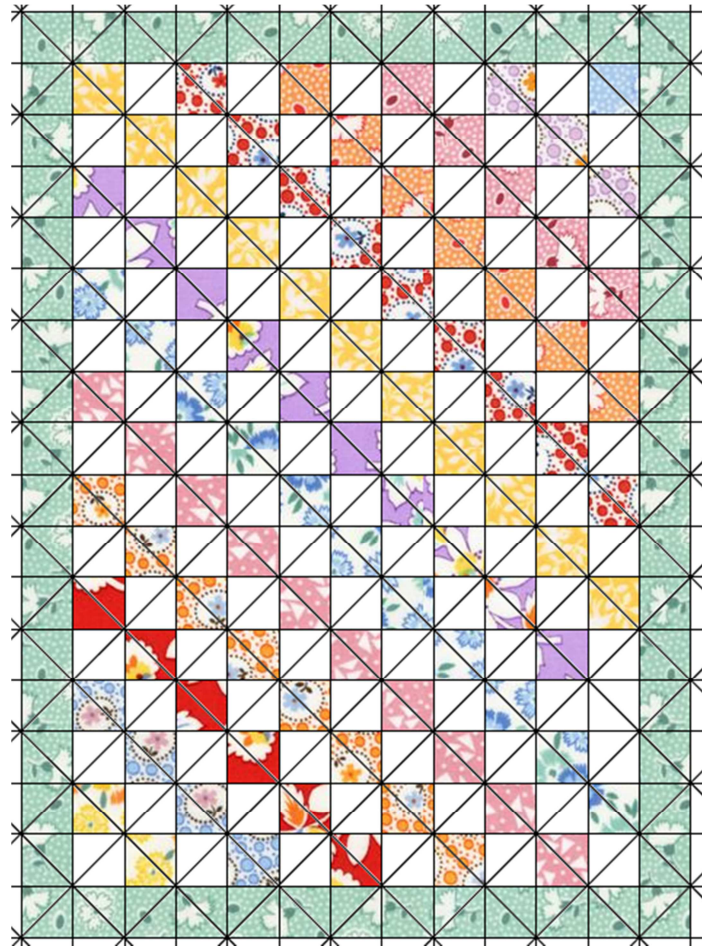


- g. On the "Save Image" screen you will need to expand the "Select File Type" section and choose JPEG in the list
- h. Then click save



- i. Then click EXPORT
- j. Click on SAVE
- k. Go to your picture and double click on it to open it

- l. Your picture should look similar to the one below:



- m. You should now be able to repeat these steps to create many different quilt designs, try out fabric placements etc. I hope you found this information helpful and informative!