

Optical Illusion Quilt

Yardage 2.25 yards (44-45" wide) each of two colors

You can probably cut the yardage down slightly if using a non-directional fabric-
approximate "waste" 6.5"x 37" and 5" x 39" of each color

Finished size (does not include borders)

All seams sewn with a .25 (1/4 inch) seam

Use highly contrasting fabrics for best effect

Cut the following strips: (in inches)

Number x width x length

Black Fabric

Ba 4 x 1.5 x 39

Bb 4 x 2.5 x 39

Bc 4 x 3.5 x 39

Bd 2 x 4.5 x 39

Be 4 x 2 x 37

Bf 4 x 3 x 37

Bg 4 x 4 x 37

Bh 1 x 1.5 x 37

White Fabric

Wa 4 x 2 x 39

Wb 4 x 3 x 39

Wc 4 x 4 x 39

Wd 1 x 1.5 x 39

We 4 x 1.5 x 37

Wf 4 x 2.5 x 37

Wg 4 x 3.5 x 37

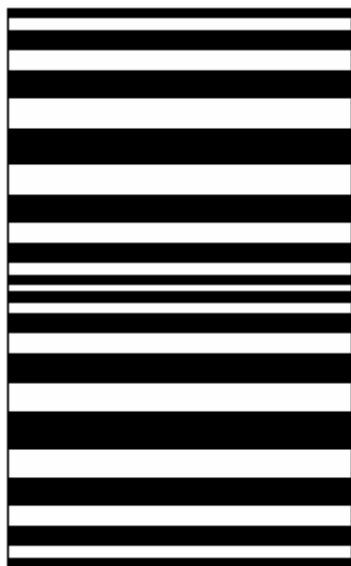
Wh 2 x 4.5 x 37

Optical Illusion Quilt

Sew the following strips together along their length

This will be set 1

Ba
 Wa
 Bb
 Wb
 Bc
 Wc
 Bd
 Wc
 Bc
 Wb
 Bb
 Wa
 Ba
 Wd
 Ba
 Wa
 Bb
 Wb
 Bc
 Wc
 Bd
 Wc
 Bc
 Wb
 Bb
 Wa
 Ba



Cut the resulting fabric vertically into strips with the following widths (in inches)

The red lines in the picture are cut lines

1.5
 2.5
 3.5
 4.5
 3.5
 2.5
 1.5
 1.5
 2.5
 3.5
 4.5
 3.5
 2.5
 1.5

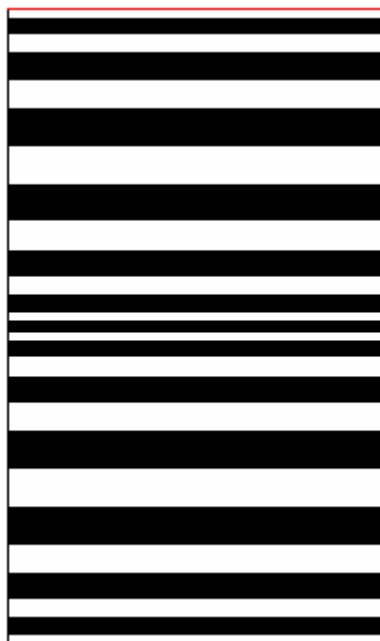


Optical Illusion Quilt

In a second set, sew the following together along their length

This will be Set 2

We
Be
Wf
Bf
Wg
Bg
Wh
Bg
Wg
Bf
Wf
Be
We
Bh
We
Be
Wf
Bf
Wg
Bg
Wh
Bg
Wg
Bf
Wf
Be
We

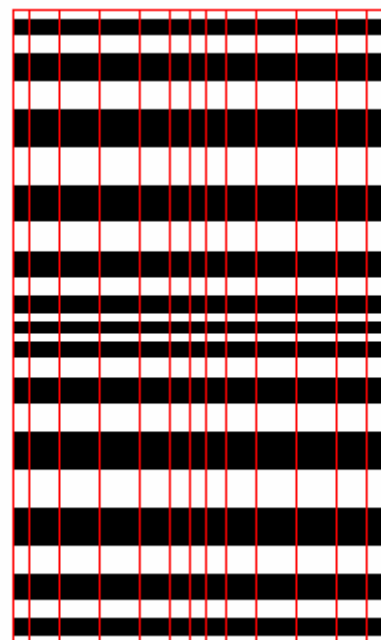


Cut the strips vertically into strips with the following widths (in inches)

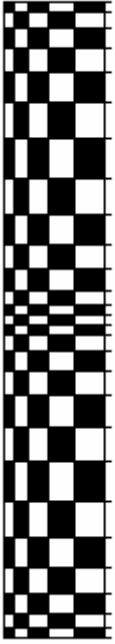
Cut on the red lines

2
3
4
4
3
2
1.5
2
3
4
4
3
2

Make sure you keep the strips in order! I know, now I tell you...



Start with the left-most strip from set 1 and alternate set 1 set 2 set 1 set 2 etc.



Continue in this manner until you have used all your strips, and if I've written this up correctly, you should have something that looks like this

