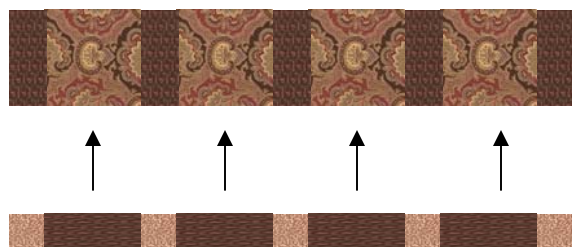
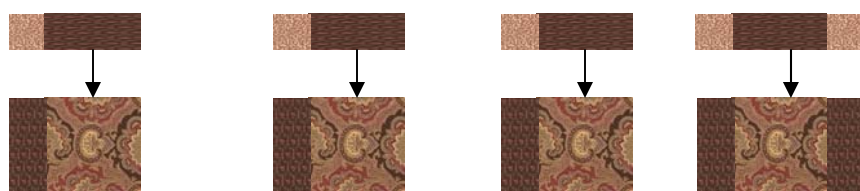


## Assembling Quilt With Sashing and Cornerstones



Often you will come across these instructions for setting cornerstones and sashing strips. Assembling the rows of blocks with sashing between as one row and the sashing below with the cornerstones as a second row, then attaching them together. This method allows for too many problems in my opinion. Uneven seam allowances ever so slight lend themselves to puckers and miss aligned joints. There is no law that even when the pattern tells you to use this method, that you must. Note - This is the version showing a mid row or bottom row. See alternative method - below. Showing the top row of the quilt.



In this technique, your sashing and cornerstones are attached to the block itself. These pieces become part of a larger block that you can adjust your intersections and accommodate or fix seam allowances. You end up with blocks to put together. If you are a beginner or are having problems be sure to measure the blocks and trim all of them to the correct size now.

Example : top row - 12" block + 2" sashing row on top gives a vertical measurement of 14 1/2" allowing for the seam allowances.

The last block in the row has two sashing pieces so it will measure 14 1/2" vertically and 16 1/2" horizontally. If your blocks are off, here's your chance to fix things.

By using the sashing to block technique you can easily assemble many small blocks into fours or sixes making them larger blocks for easier handling. Remember there are no rules, do what works for you.