

Easy Street, Part 8!  
The Big Finale!  
© Bonnie K Hunter & Quiltville.com 2012

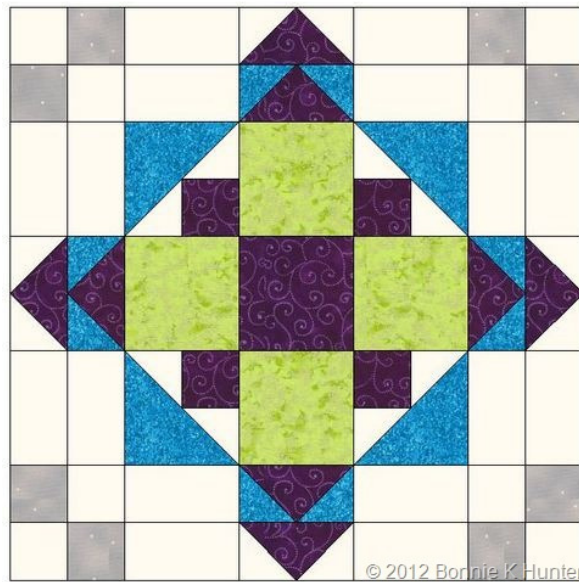
As you know, I am back out on the road – my teaching year has begun already!

I hope to see many of you in Plano and McKinney TX while I am here! And on January 6th I'm off to Arizona to visit with the Quail Country Quilters of Cottonwood and the Thumb Butte Quilters of Prescott!

I'll also have some time in between to visit with my Dad and with my brother and his family while I'm in Arizona --looking forward to some family reunion time.

I want to give you something to keep you busy while I'm gone – I won't be around to post clues every Friday anymore, it's just too much to juggle. So let's start this new year off with a plan to put all those units we've worked on since Thanksgiving to good use!

It's BLOCK TIME, Baby!



Easy Street Block A!  
Make 16!

All off the “made in the flesh” block photos that I took while making this quilt were destroyed in the great luggage mishap of July --- the same mishap that killed my magenta featherweight also killed my laptop, remember? So I hope that my digital images will suffice for this part!

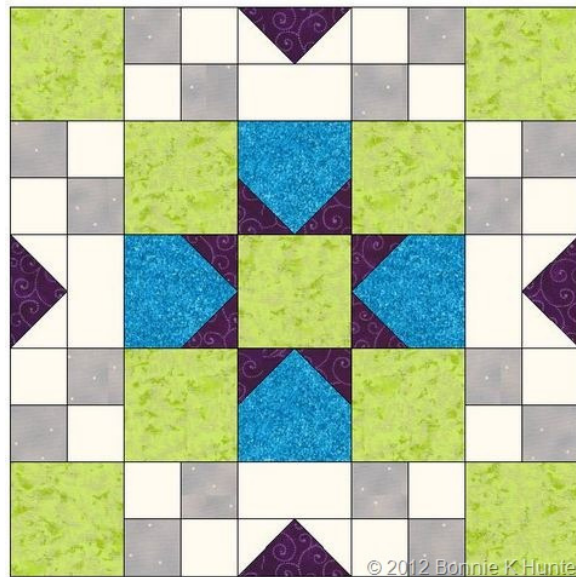
I didn't color these blocks scrappy because I thought it would be easier to see the layout if I kept it simple. Our blocks will measure 15-1/2" square and finish at 15" in the quilt. I bet you didn't see THAT coming!

One more “unit” needed!

From purple scraps, cut 16 3-1/2" squares for block centers!

Lay out units as shown, paying close attention to the direction the 4 patches turn. I pressed the “path of least resistance”, letting the spinning seams on the back of the 4 patches dictate the way the other seams would face. Sometimes I’d have to press something the other way ---just work with it and deal with it. Sometimes when scrap quilting there is no way to plan to get EVERYTHING to nest the way you’d like it to. Sometimes I press open and just pin to match to eliminate bulk.

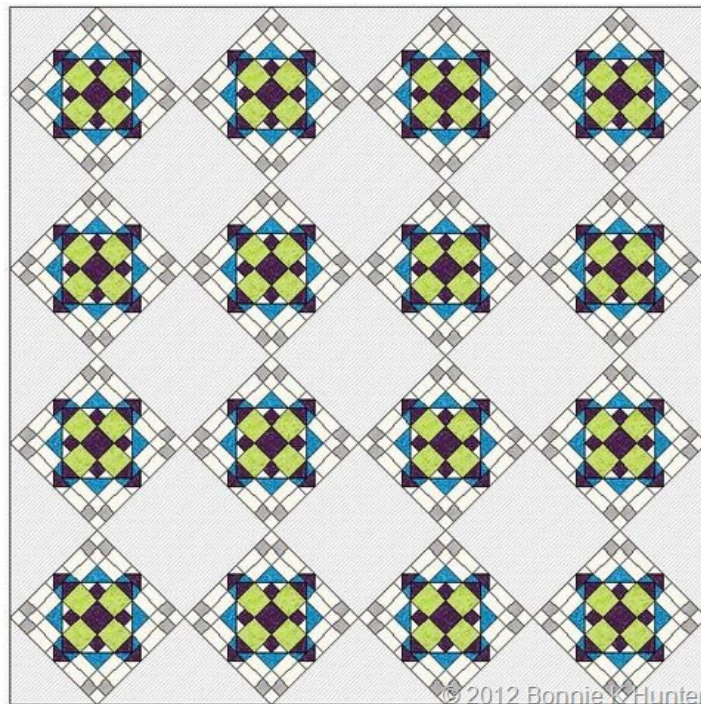
Of course, those who are using “one background” will be replacing the double brick units with solid 3-1/2” background squares.



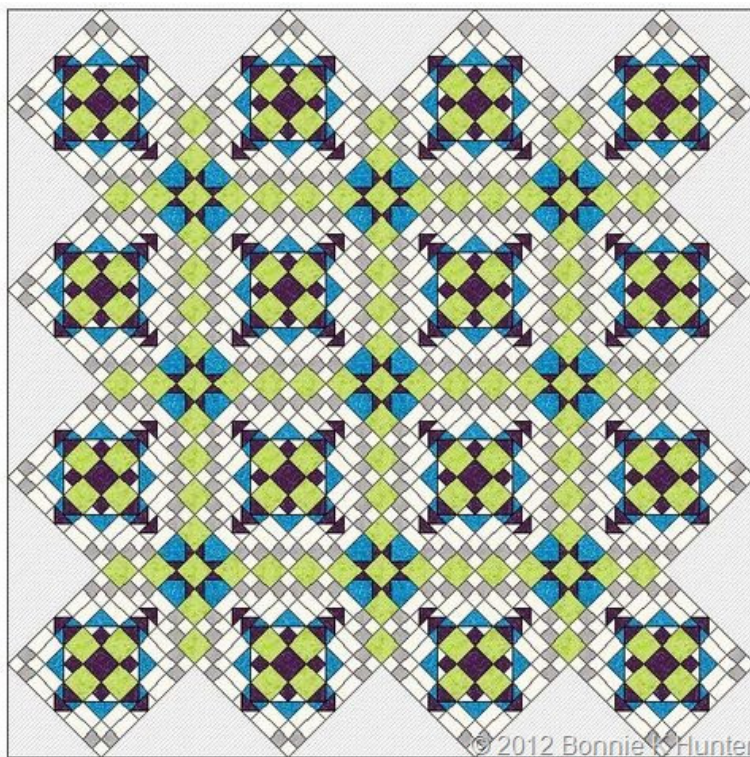
Easy Street Block B  
Make 9!

Again, pay very close attention to your 4 patches on this block! Press. Blocks will measure 15-1/2” and finish at 15” in the quilt.

Layout & Assembly!



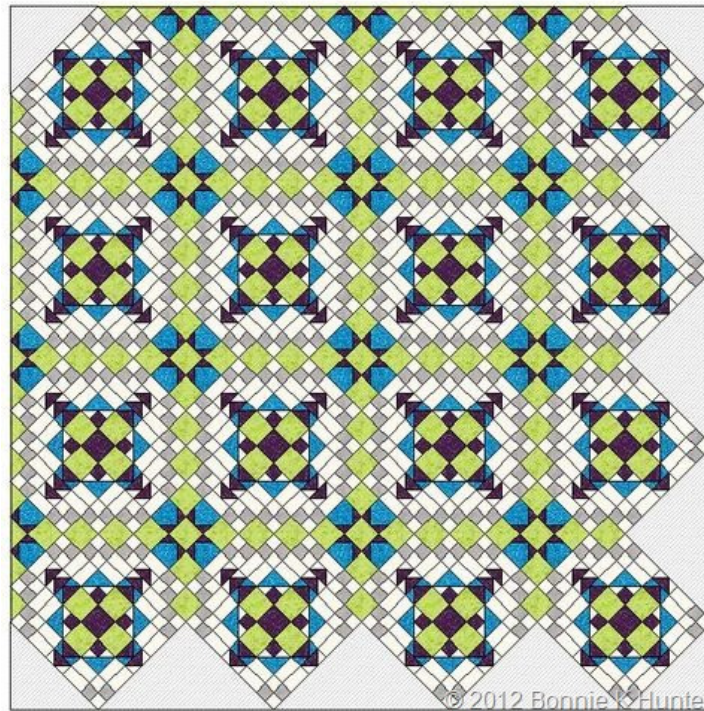
Lay out Block A's in a 4 X 4 layout on point!



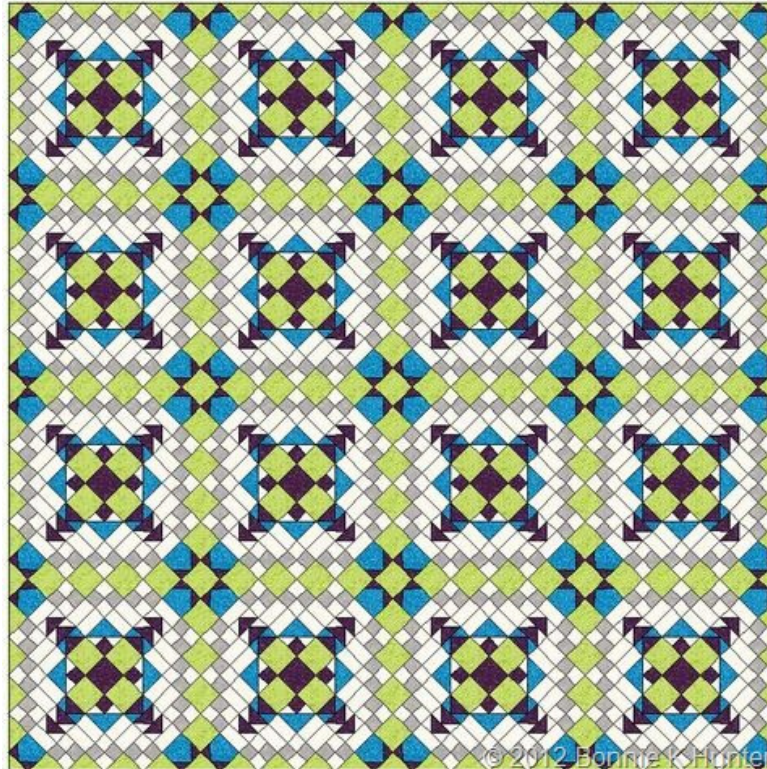
Put the 9 Block B's in place as Alternate Blocks!



Lookin' good!



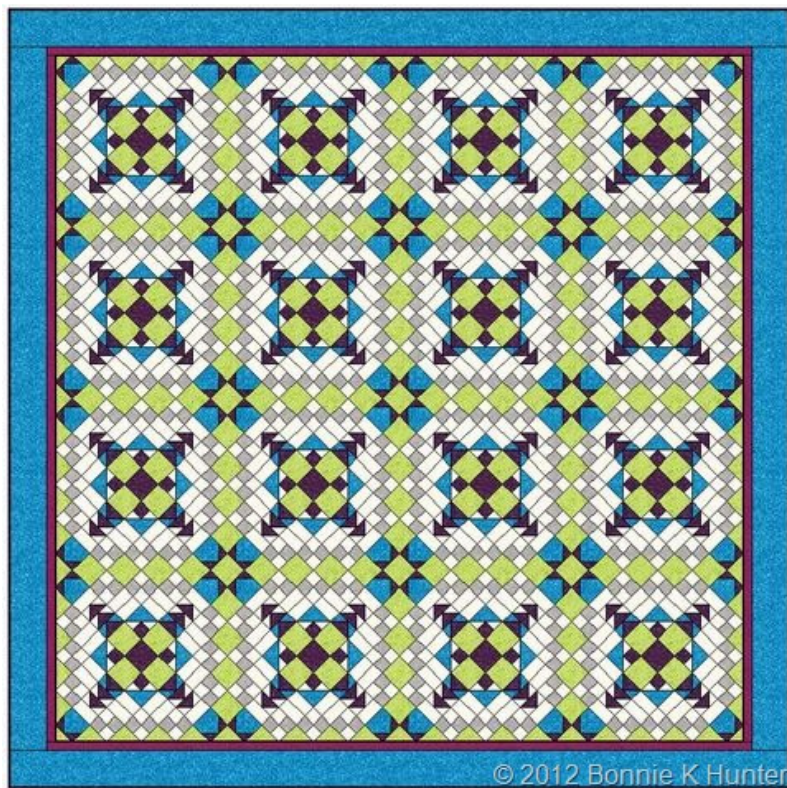
Fill in the side triangle areas with the large pieced triangles from Part 7!



Complete the quilt center by adding the 4 small pieced triangles as corners!

Easy Street is an On-Point setting – and will be pieced in diagonal rows. I like to piece the quilt in two halves....and join the halves to complete the quilt center...one half will be one row longer, including the center row as this is a square quilt.

Why is it a square quilt? Because one row longer would be TOO LONG, and one row narrower would be too skinny and not show off the block repeat as well. That's how I decide what to do.



### Optional Borders!

You can choose to border or not to border – the choice is up to you. I chose a red-violet inner border, and cut it 1-1/2" wide to finish at 1". My outer border of turquoise print was cut at 5" wide to finish at 4-1/2" in the quilt. I bound my quilt with a purple batik I brought home from Bali!

### Inner Border:

Cut 9 1-1/2" strips across the width of the fabric from selvage to selvage. Join the border strips end to end with diagonal seams to make a strip approximately 360" long. Trim excess 1/4" from seams and press seams open.

Lay the quilt center out on the floor, smoothing it gently. Do not tug or pull. Measure the quilt through the center from top to bottom. Cut two inner side borders this length. Sew the inner side



borders to the quilt sides with right sides together, pinning to match centers and ends. Ease where necessary to fit. Press seams toward the borders.

Repeat for top and bottom inner borders, measuring across the quilt center, including the borders just added in the measurement. Cut top and bottom inner borders this length. Stitch the top and bottom inner borders to the quilt center, pinning to match centers and ends, easing where necessary to fit. Press seams toward borders.

### **Outer Border:**

From Turquoise print, cut 9 5" strips across the width of the fabric from selvage to selvage. Join the border strips end to end on the straight of grain to make a strip approximately 360" long. Press seams open.

Add the outer borders in the same manner as the inner borders were added.



My Easy Street!

Due to bad weather I had no choice but to photograph this inside..and the colors look a bit dull and yellowed. The close-ups below are better:



Close up, Bottom corner showing inner and outer borders.



Close up of quilting detail.





I quilted Easy Street in an edge-to-edge design called [Twofold Feathers](#) by Urban Elementz using Signature thread in variegated pastel. I love how the subtle variations in color played through the entire quilt!

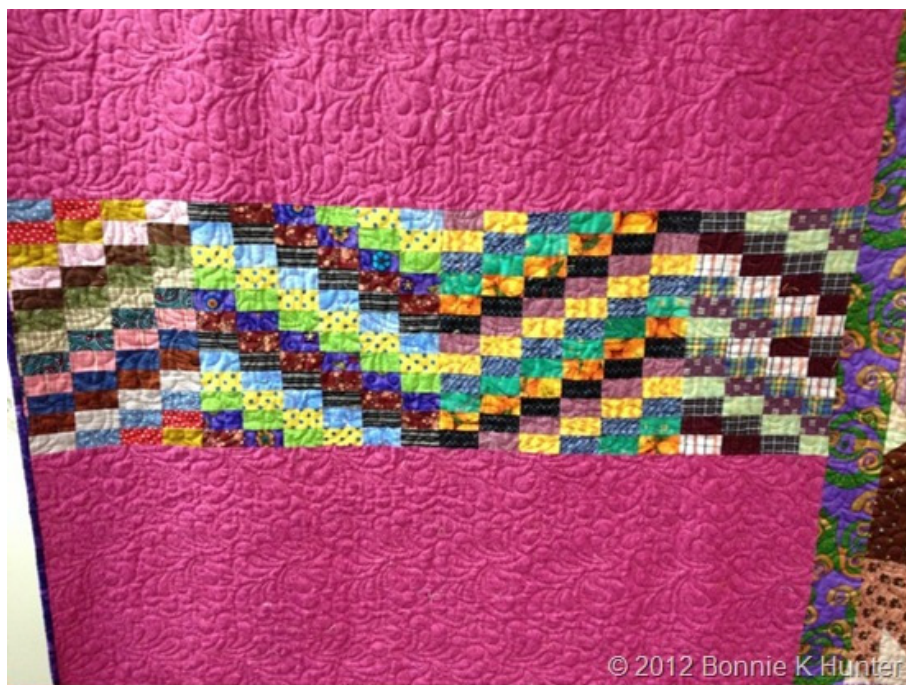
Quilt Back Fun:



Not quite enough fuchsia for the back!

Orphan bin to the rescue! Of course, I wasn't paying attention to anything that was going on in the front of the quilt here ---but I did want to include some purple, some turquoise and some green ---they are in there if you look close enough!





I know the fuchsia has been in the stash more than 10 years. I remember when I bought it...and let me tell you – when you make quilts as big as I like them...6 yards is NOT enough to buy when stashing!

I've enjoyed my time on Easy Street with you this time around. I hope you've had as much fun as I have sewing each step and are happy with how it turned out!

Our next Link-Up will take place next Monday, January 7th. I can't wait to see your progress!

Happy New Year, Everyone! Let's have a FABULOUS 2013!

*Bonnie*