

Pincushion and Scrap Catcher



Here's a project that is fun to make and useful, too. Set it near your sewing machine and let the pincushion keep your pins and needles handy while the scrap catcher corrals all your threads and snips. For versatility and easy clean up, the bag and pincushion easily unbutton. For even more ease of clean up, slip a plastic cup into the bag.

Your sewing area will be tidy and your pins handy when you keep a scrap catcher nearby.

Materials

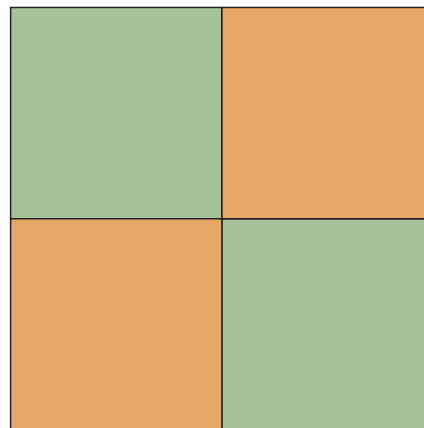
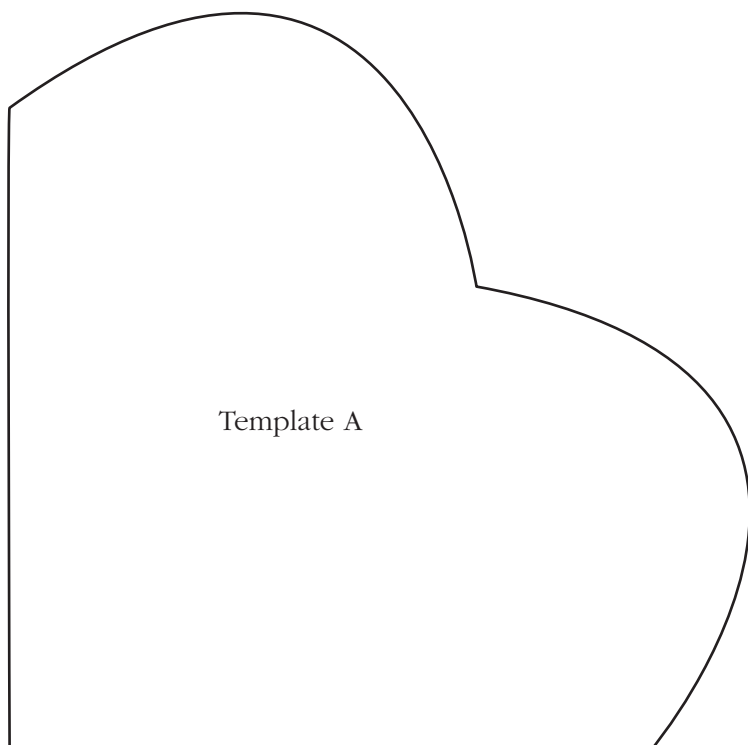
- ¼ yd. stripe
- ⅓ yd. floral print
- 1 cup flax seed
- Fiberfill
- 3 buttons (¾")

Cutting Instructions

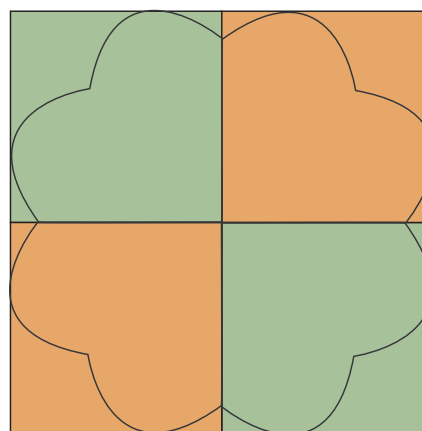
- From the striped fabric, cut:
 - 4 squares 4½" x 4½"
- From the print fabric, cut:
 - 4 squares 4½" x 4½"
 - 2 rectangles 7" x 14"
 - 1 strip 2" x 18"

Piecing the Pincushion

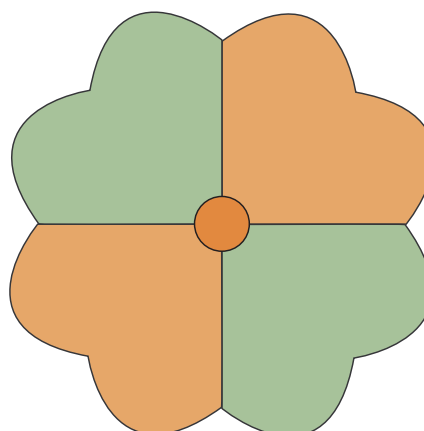
1. With the $4\frac{1}{2}$ " squares, make two four-patch blocks.
2. Place the two four-patch blocks right sides together. Baste around all sides.
3. Trace around Template A in all four sections of a four-patch block. You only need to trace on one of the four-patch blocks.
4. With a short stitch and a $\frac{1}{4}$ ", machine sew the two four-patch blocks together following the traced line. Trim, leaving an $\frac{1}{8}$ " seam allowance.
5. Open a section of seam near the center of the four-patch. This will be used for turning and stuffing the pincushion.
6. Gently turn the petals right side out through the hole.
7. Pour the flax seed in through the opening. This will give your pincushion enough weight to hold the scrap catcher.
8. Finish stuffing with fiberfill, distributing the flax and fiberfill evenly. Blind stitch the opening closed.
9. Place a button on either side of the center and stitch in place.



Four Patch.



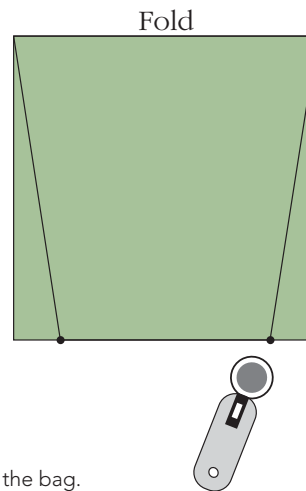
Trace the flower design.



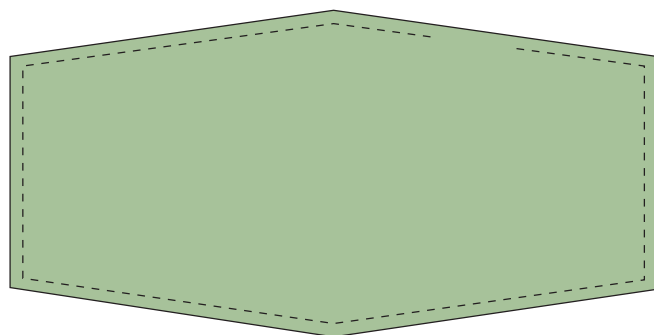
Finished pincushion.

Piecing the Scrap Catcher

1. Fold a 7" x 14" rectangle in half, right sides together. Place the fold at the top.
2. Measure in 1" on the right side of the raw edge along the bottom.
3. Place your ruler on the 1" mark, and align it with the top right corner. Trim. Repeat for other side.
4. Repeat steps 1–3 with the second 7" x 14" rectangle.
5. Place the two trimmed rectangles right sides together. Stitch, leaving a 2" opening.
6. Turn right sides out. Blind stitch the opening closed.
7. Starting with one short end, tuck the bag in on itself. Press.
8. Sew remaining button to inside edge of bag.



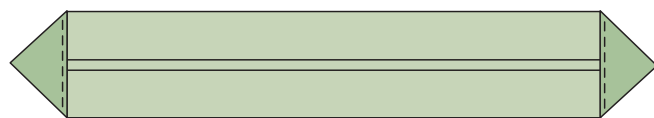
Trim the sides of the bag.



Sew the sides of the bag together.

Piecing the Connector

1. Hem the short ends of the 2" x 18" strip.
2. Fold lengthwise, right sides together. Stitch $\frac{1}{8}$ " from long edge. Turn right side out.
3. Press, laying the seam down the back of the strip.
4. Whip stitch the short ends together. Lay flat and press, letting points form at either end.
5. Top stitch across points.



Connector strip.

Assembly

Slip one end of the connector strip over the button on the bottom of the pincushion. Slip the other end over the button on the bag. Set near your sewing machine to keep your pins handy and your threads and fabric bits off the floor.