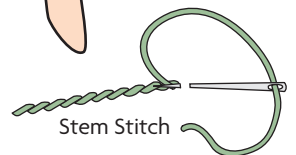
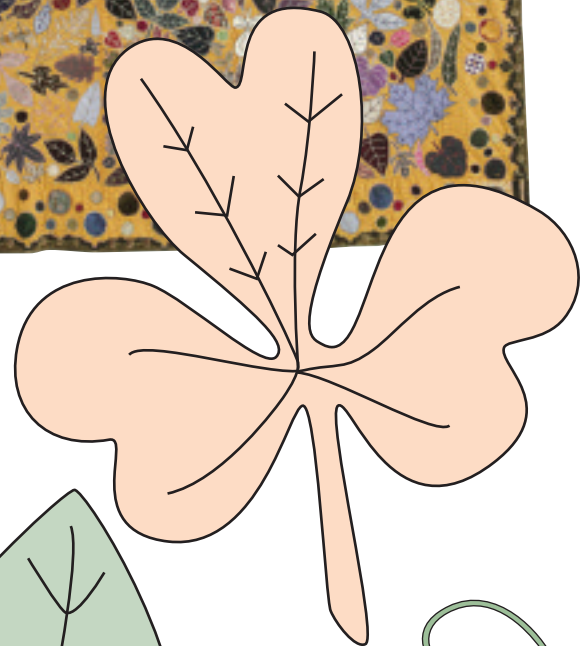
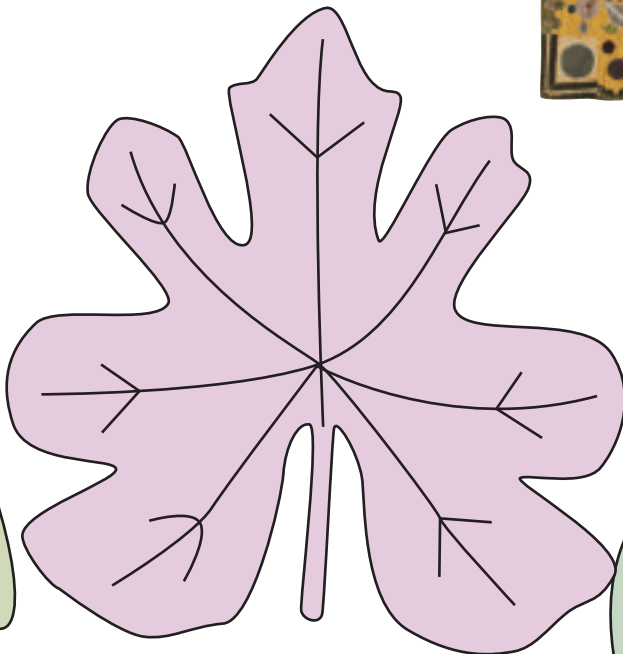
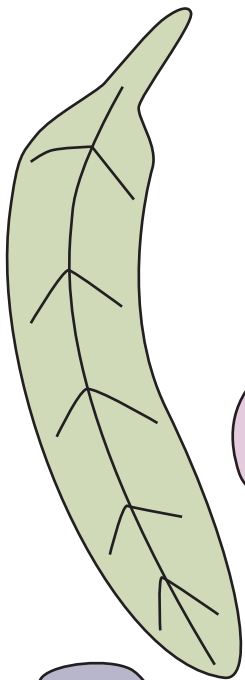
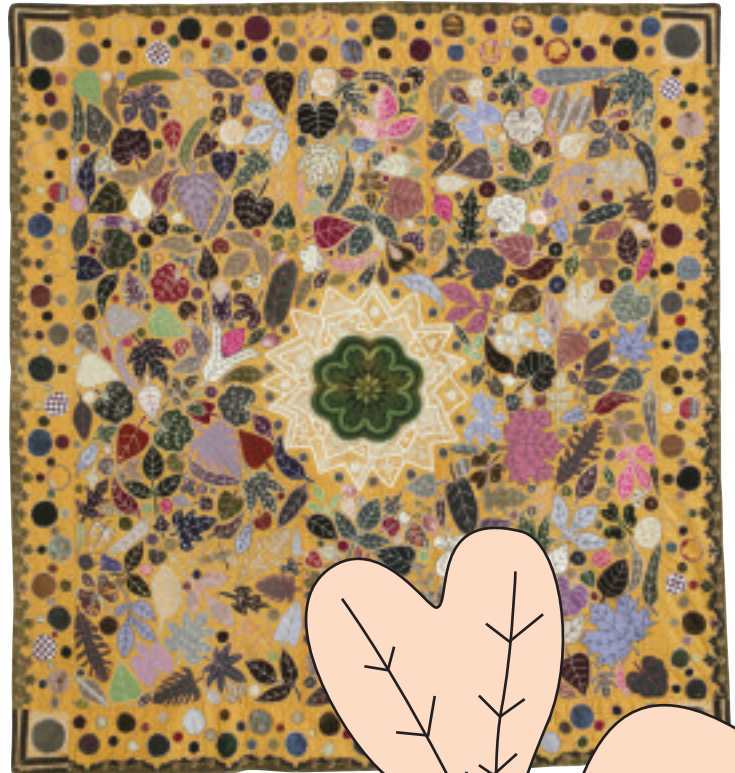


Leaf Crazy

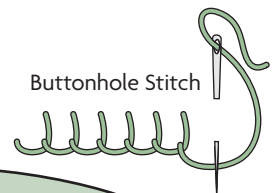
A bonanza of antique applique is presented in Leaf Crazy in the November 2008 issue. Many different leaves, gathered by the quiltermaker, were used as patterns for this quilt.

Here are more leaves, a butterfly, and detailed photographs of Original Leaf Applique by Corean Liggitt (1872-1946).

Enjoy creating your own quilted landscape of fall leaves using the patterns provided here and in the issue.



Stem Stitch



Buttonhole Stitch

