

# Tape measure closure for Bag

by Sue Lough



This tutorial shows how to use a sprung tape measure to make a top closure on a bag – it will snap back on itself when you close it and will stay closed.

You will need –metal sprung tape measure at least ½” wide  
Scissors

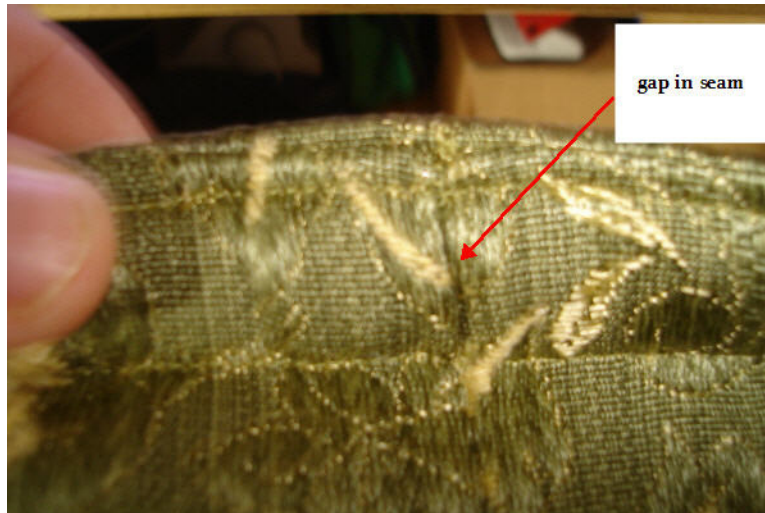


This tutorial will show how to insert the tape into the bag to form the closure, there is no special method needed for the construction of the bag, so make it your favourite way.

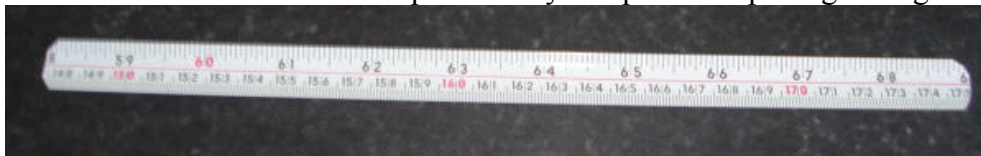
When the bag is complete run two rows of stitching around the top to make a channel for the tape. I do the first row about ¼” below the top edge then the 2<sup>nd</sup> row the width of the tape plus about 1/8”



Now open the side seam in between the stitching lines



Take your tape measure and cut two pieces the width of the bag top and round the ends – my bag is 12” wide – it is important to have the tape the full width from seam to seam – round the ends to prevent any sharp corners poking through



**Tape cut to size and ends rounded**

Now push the tape into the casing – curved side facing the inside of the bag. So it will look like )( . The curved side is the plain one without the measurements on it.



Push it fully to the other end, then do the same for the other side

It is important to have the curved sides facing the inside of the bag as this is what causes it to spring back on itself.

Once your two pieces of tape are inserted the only thing left to do is to hand stitch the little gaps in the seams – and your bag is finished.

Below is a sideways drawing showing the stitched casing lines with the tape inserted - curved sides inwards

