

# Flirt Dresden Plate Quilt

50 1/2" x 50 1/2"

by Marinda Stewart



featuring fabric from Flirt collection  
by Robyn Pandolph



# “Flirt Dresden Plate” Quilt

by Marinda Stewart

size: approximately 50 ½” by 50 ½”

skill level: intermediate

Materials: All fabrics from the “Flirt” collection by Robin Pandolph  
for FreeSpirit Fabrics

1yd. RP06 – rose

1yd. RP05 – green

½ yd. RP03 – ivory

¼ yd. RP08 – green

1/6 yd. each RP01 *all blue*

RP02

RP03

RP03 *all tangerine*

RP04

RP07

RP02 *all green*

RP03

RP07

RP01 *all rose*

RP04

RP01 – ivory (used as a “pink”)

backing 55” x 55”

batting 55” x 55”

threads to match

scissors, straight pins

acrylic ruler, mat, rotary cutter

## Directions:

1. For one 6 ½” x 6 ½” block from RP05-green cut one “A”. From designated fabrics cut five “B”. From RP03-ivory cut one “C”. Sew blades together. Press seams open. Lay stitched blades together. Press seams open. Lay stitched blades on top of “A” right sides up. Align outside edges of blades with the sides of “A”. Blades will overlap “A”. Machine appliqué blades in place along zigzag edge. Place “C” right sides up on top of blades to fill-in the corner and complete the block. Machine appliqué in place on curved edge. Finished block should measure 6 ½” x 6 ½”. Make 41 blocks total.

10 blocks with (3) green blades and (2) pink blades.

10 blocks with (3) pink blades and (2) green blades.

-cut (17) blades from each fabric RP07-ivory used as a “pink”.

10 blocks with (3) blue blades and (2) tangerine blades.

11 blocks with (3) tangerine blades and (2) blue blades.

-cut (18) blades from each fabric.

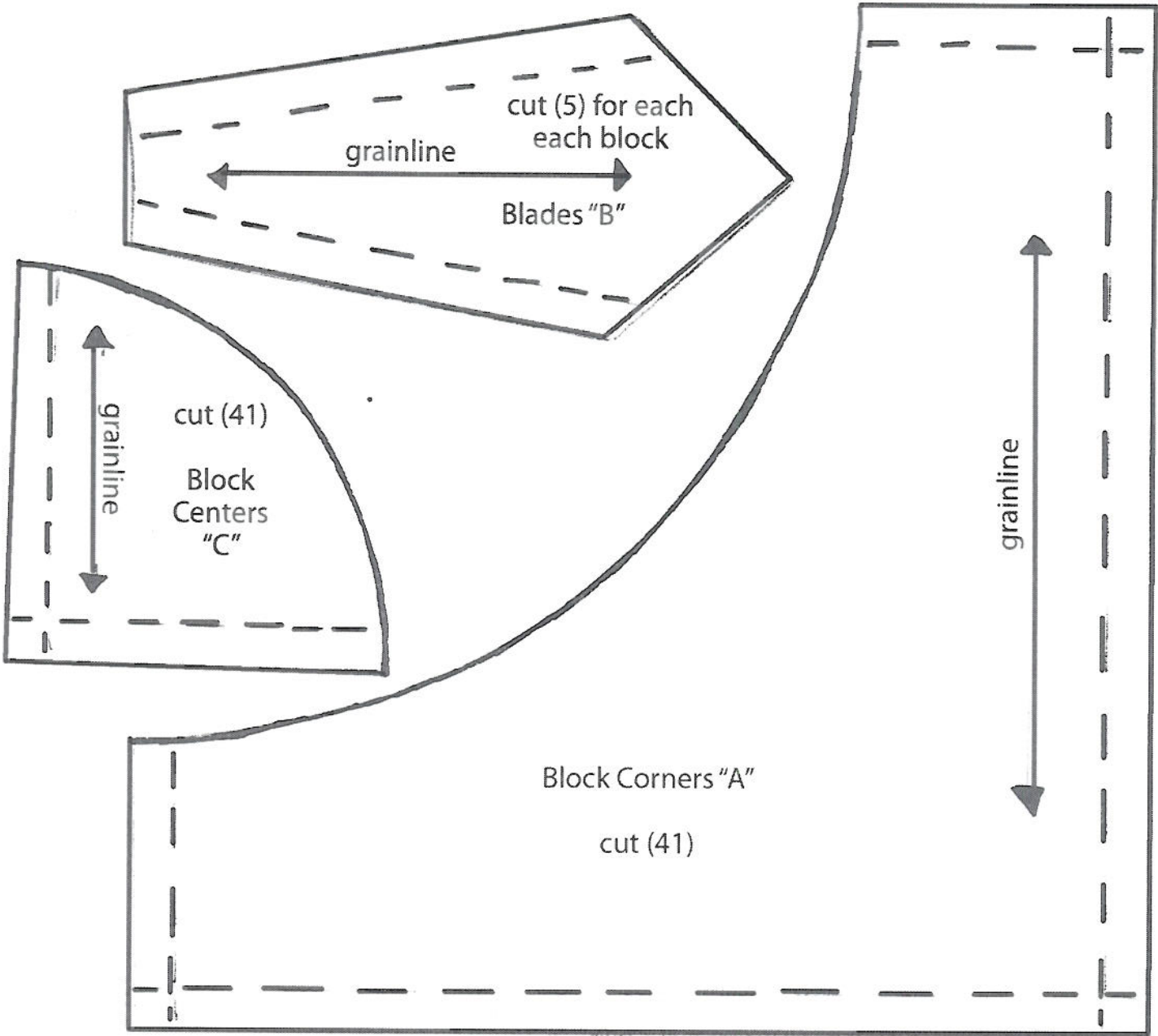
NOTE: There will be several unused blades leftover.

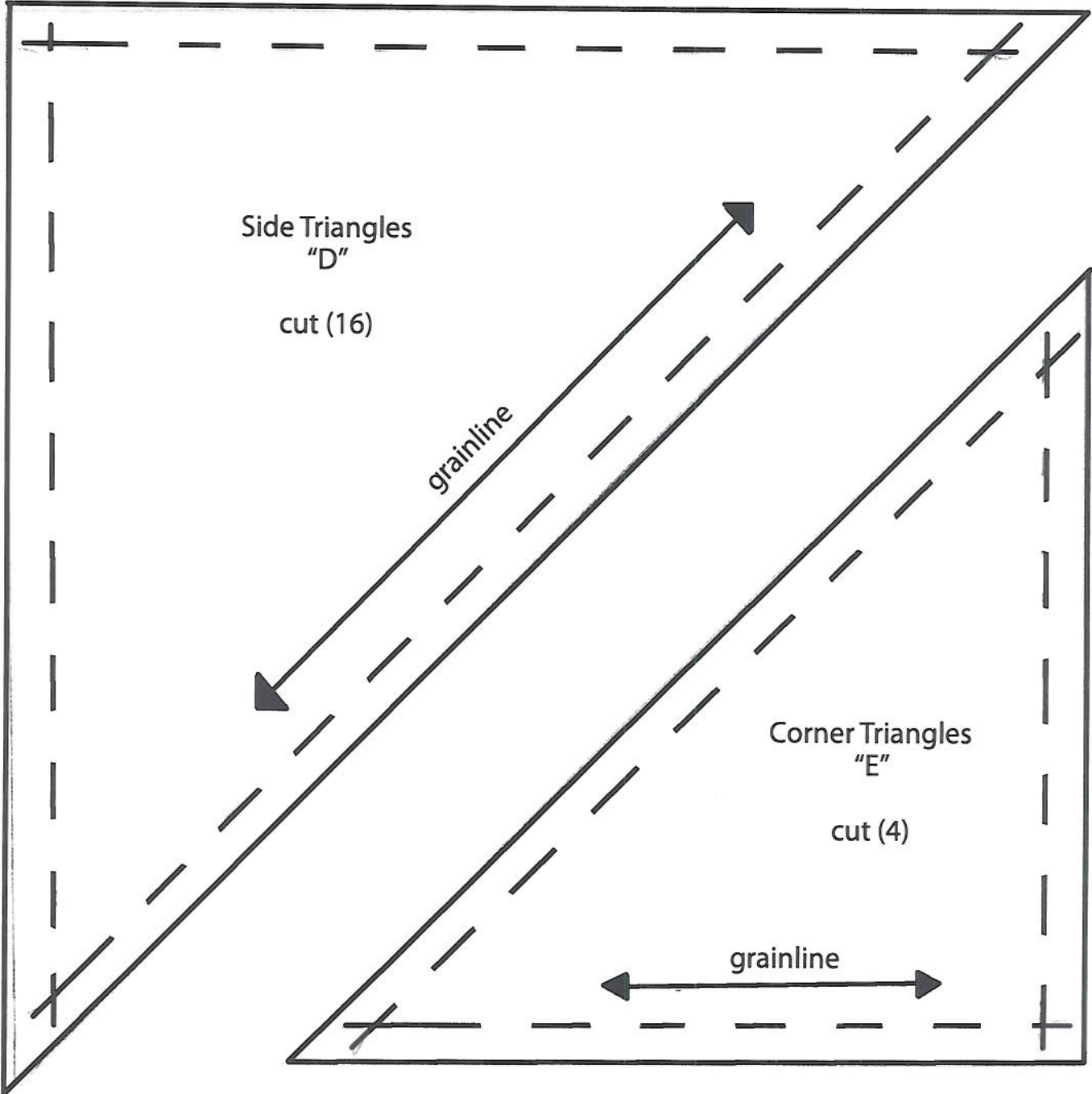
2. From RP03-ivory cut sixteen “D” and four “E”.

3. Quilt is assembled in diagonal rows. To assemble begin at one corner. Sew one “E” to the top of one block. Sew one “D” to each side of the block to make a corner unit.

Beginning and ending with “D” sew rows together as shown. Refer to photo for block placement. End with a corner unit in the opposite diagonal corner.

4. From RP03 cut (2) 1 ½"x 43" pieces. Sew to the top and bottom of the quilt. Cut two pieces 1 ½" x 45". Piece if needed. Sew to each side of the quilt.
5. From RP06-rose cut five 3" width of fabric strips. Piece together. Cut two lengths 45" long. Sew to the top and bottom of the quilt. Cut two lengths 50 ½" and sew to each side.
6. Layer backing, batting and quilt-top. Baste.
7. Quilt as desired.
8. From RP06 cut binding. Piece as needed. Bind all four sides of the quilt to finish.





# Fun Block Template

