



Twist Around the Garden



2

SIMPLE BLOCKS
MAKE A TWISTING
GARDEN MAZE

Twist Around the Garden

*All measurements include seam allowances.
Please read instructions before
beginning this project.*

Cutting:

Large floral cut:

7 – 9½" x WOF strips. Subcut into 9½" x 9½" squares (28 total)

Floral stripe cut:

4 – 5½" x WOF strips. Subcut into 5½" x 5½" squares (28 total)

Blue and Brown Prints, from each cut:

6 – 2½" x WOF strips. Subcut into 2½" x 7½" strips (28 total)

2 – 2½" x WOF strips. Subcut into 2½" x 2½" squares (24 total)

Green print cut:

12 – 2½" x WOF strips. Subcut into 2½" x 7½" strips (56 total)

4 – 2½" x WOF strips. Subcut into 2½" x 2½" squares (64 total)

Border 1 cut:

7 – 3½" x WOF strips.

Border 2 cut:

8 – 2" x WOF strips.

Border 3 (outer border) cut:

8 – 5½" x WOF strips.



Quilt by Clare Cox

FINISHED QUILT: 82" x 91"
FINISHED BLOCK: 9" x 9"

Fabrics:

Blocks:

2½ yds — Large Cream Floral (2540-12)

¾ yd. — Cream Floral Stripe (2545-12)

¾ yd. each — Blue and Brown Prints
(2540-21 and 2542-16)

1½ yds. — Green Print (2541-14)

Borders:

Border 1 — ¾ yd. — Pink Floral (2540-25)

Border 2 — ½ yd. — Blue/Cream Print (2543-11)

Border 3 — 1½ yds. — Blue Floral Stripe (2545-11)

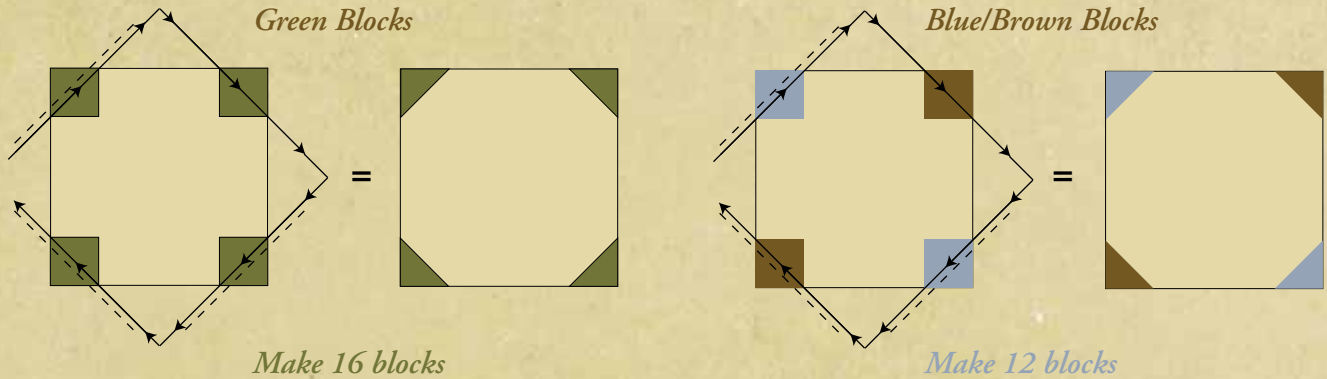
Backing — 5½ yds.

Snowball Block – 28 total

To make a snowball block place a $2\frac{1}{2}$ "x $2\frac{1}{2}$ " square in each corner of a $9\frac{1}{2}$ "x $9\frac{1}{2}$ " floral block.

Sew each corner square diagonally. Trim corners and press. Block should measure $9\frac{1}{2}$ "x $9\frac{1}{2}$ " square. *See diagram.*

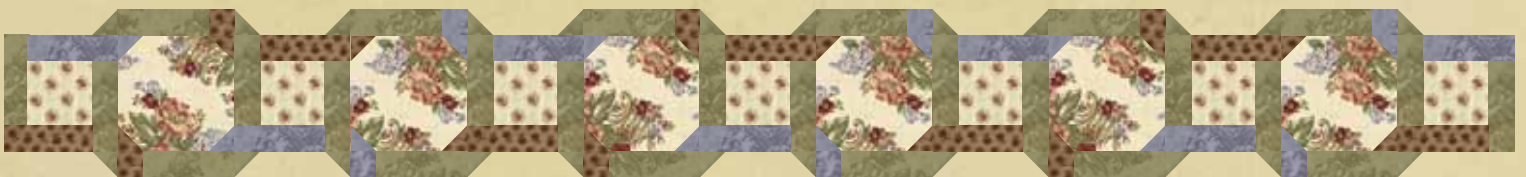
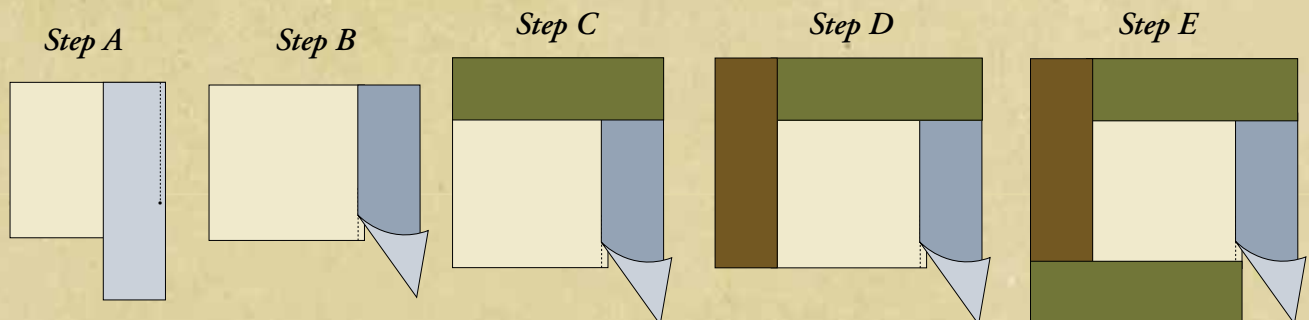
Make 16 blocks with 4 green corners. Make 12 blocks with blue and brown in opposite corners.



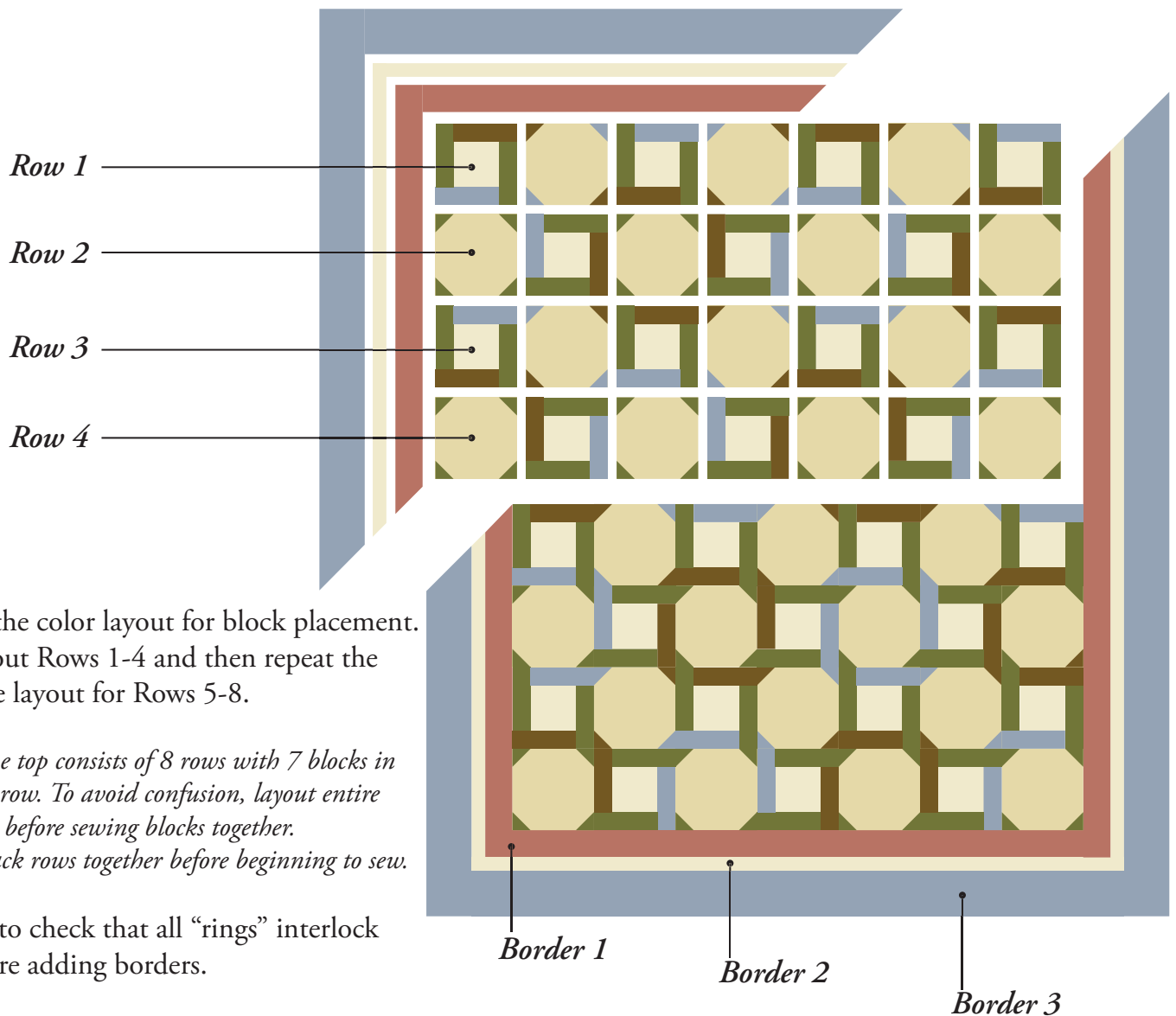
Alternate Block – 28 total

Note: This block begins with a partial seam.

1. With rights sides together sew a blue strip ($2\frac{1}{2}$ "x $7\frac{1}{2}$ "") halfway down seam line (to the dot). Finger press the partial seam. *See diagram Steps A and B.*
2. Rotate block $\frac{1}{4}$ turn to the right (clockwise) and add a green strip. Press.
3. Rotate block $\frac{1}{4}$ turn to the right again and add a brown strip. Press.
4. Repeat rotation and add another green strip. Press.
5. Finish sewing the first seam. Press. Block should measure $9\frac{1}{2}$ "x $9\frac{1}{2}$ ".



Assemble Quilt Top



Follow the color layout for block placement.
Layout Rows 1-4 and then repeat the same layout for Rows 5-8.

*Hint: The top consists of 8 rows with 7 blocks in each row. To avoid confusion, layout entire quilt before sewing blocks together.
Stack rows together before beginning to sew.*

Be sure to check that all “rings” interlock before adding borders.

Borders 1, 2, and 3

GENERAL DIRECTIONS FOR ALL BORDERS:

1. To determine the length of the side borders, measure the quilt top through the vertical center. Cut 2 border strips to this measurement, piecing and trimming strips when needed to attain the required length.
2. Mark the center of the border strips and the **sides of the quilt top** with pins.
3. With right sides together, pin the border strips to the quilt top matching center pins and ends. Stitch the borders to the quilt top. Press the seams toward the border. **Repeat for top and bottom.**

Note: When sewing multiple borders. Alternate placement of top/bottom and side border. Example: Border 1 sew side border strips first and then top and bottom. Border 2 sew top and bottom and then sides. Border 3 sew sides first and then top and bottom.

Press and quilt as desired.