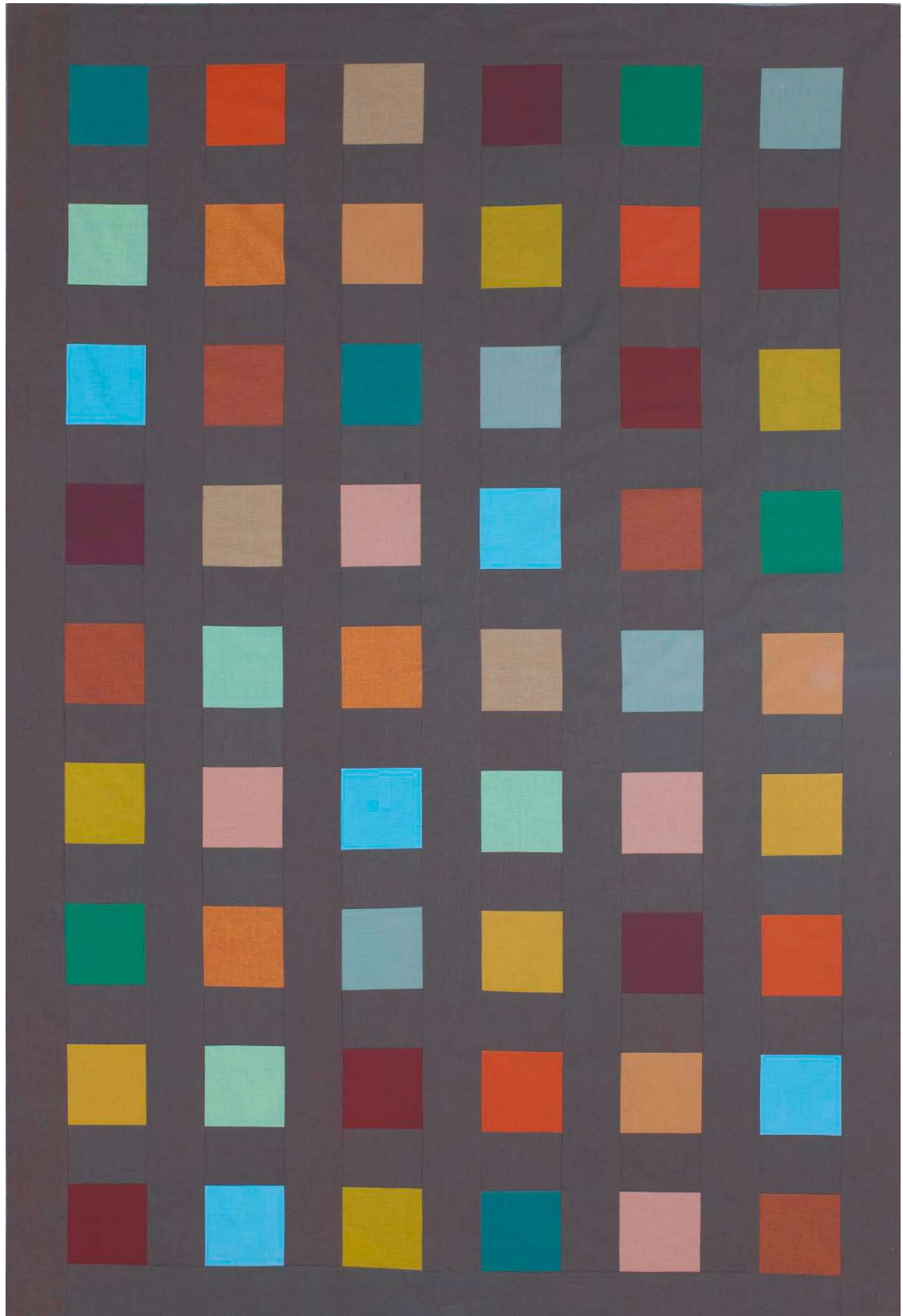


Project: Solid Squares Bed Quilt

INSPIRED BY "RED-&-WHITE DELIGHT" FROM DESIGNER MABETH OXENREIDER
PROJECT MAKER: KATHLEEN WILLIAMS



Project: Solid Squares Bed Quilt

Bright solid-color squares pop off the gray background in this simple-to-sew grid quilt. We used 15 assorted fat quarters of Shot Cottons by Kaffe Fassett for Westminster Fabrics to make a twin-size bed quilt.

Materials:

- $\frac{1}{4}$ yard each of 15 assorted solids (blocks)
- $4\frac{1}{2}$ yards solid gray (sashing, border, binding)
- $5\frac{1}{3}$ yards backing fabric
- 68×96" batting

Finished quilt: 61 $\frac{1}{2}$ ×90"

Cut Fabrics

Cut pieces in the following order. Cut sashing and border strips lengthwise (parallel to selvages).

From each assorted solid, cut:

- 4—6" squares (you will use 54 of the 60 cut)

From solid gray, cut:

- 2— $4\frac{1}{2}$ ×90" border strips
- 5— $4\frac{1}{2}$ ×82" sashing strips
- 2— $4\frac{1}{2}$ ×53 $\frac{1}{2}$ " border strips
- 48— $4\frac{1}{2}$ ×6" sashing rectangles
- 8—2 $\frac{1}{2}$ ×42" binding strips

Assemble Quilt Center

- 1.** Referring to **Quilt Assembly Diagram**, lay out 54 assorted-solid 6" squares, the gray sashing rectangles, and the gray sashing strips in 11 vertical rows.
- 2.** Sew together pieces in each row. Press seams in one direction. The pieced rows should each be 6×82" including seam allowances.
- 3.** Join rows to make quilt center. Press seams toward sashing strips. The pieced quilt center should be 53 $\frac{1}{2}$ ×82" including seam allowances.

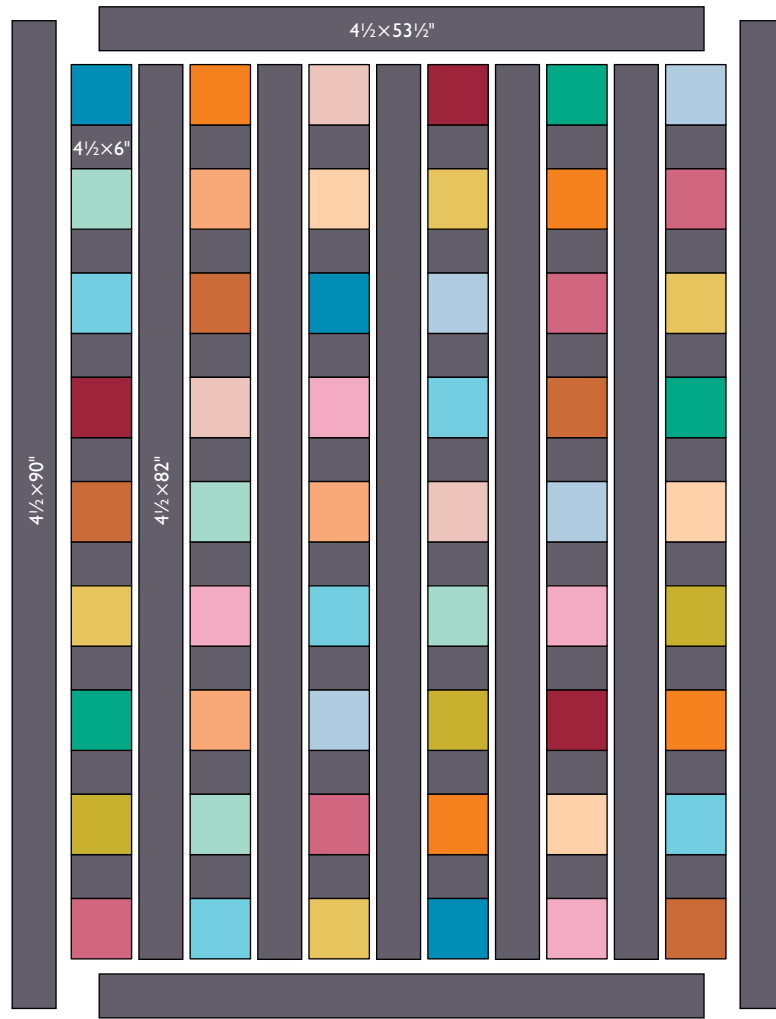
Add Borders

- 1.** Sew short border strips to short edges of quilt center. Press seams toward border.
- 2.** Sew long border strips to remaining edges to complete quilt top. Press seams toward border.

Finish Quilt

- 1.** Layer quilt top, batting, and backing; baste.
- 2.** Quilt as desired.
- 3.** Bind with solid gray binding strips.

Project: Solid Squares Bed Quilt



QUILT ASSEMBLY DIAGRAM