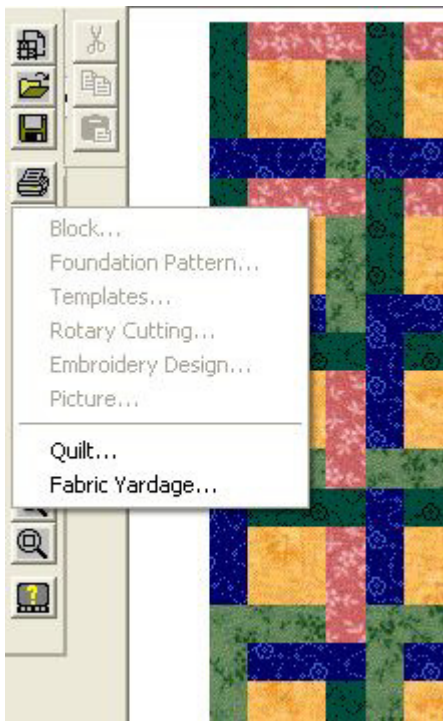


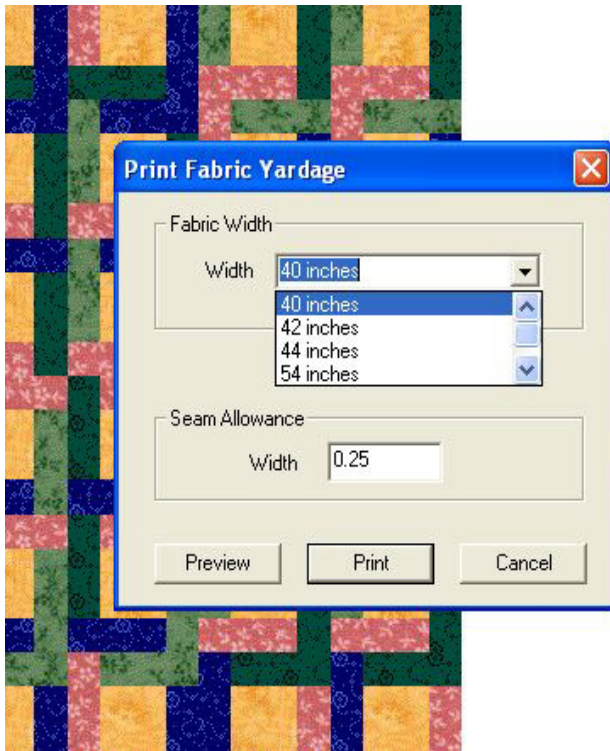
This week we will look at figuring yardage. Please read all the way through before you try to follow the directions. As far as I can tell all 3 versions are the same for this lesson. You will find the icons might be in the top tool bar in 6 and 7 instead of on the left. But otherwise they are the same.

Before you follow these steps make sure you click on layout under your quilt and make sure you have the size of your blocks right. If you are using sashing and or borders make sure you have them in the right numbers to get the best estimate on yardage.

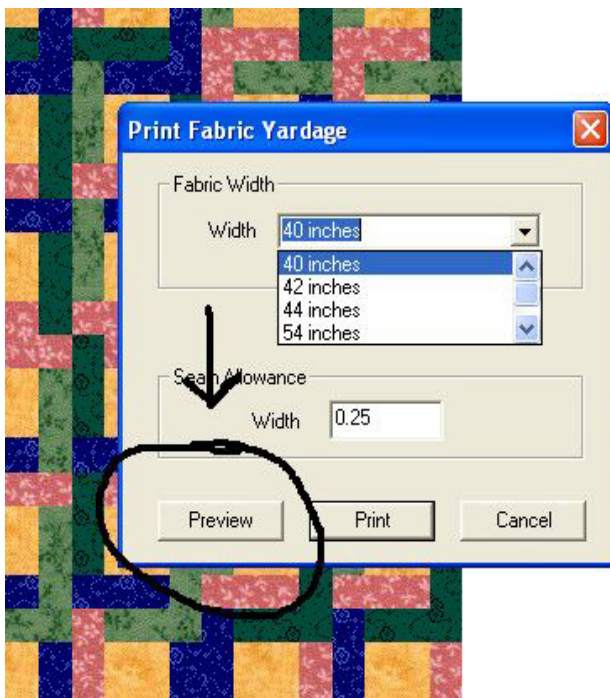
Click on the printer icon. You will see a menu pop up.  
Click on Fabric Yardage.



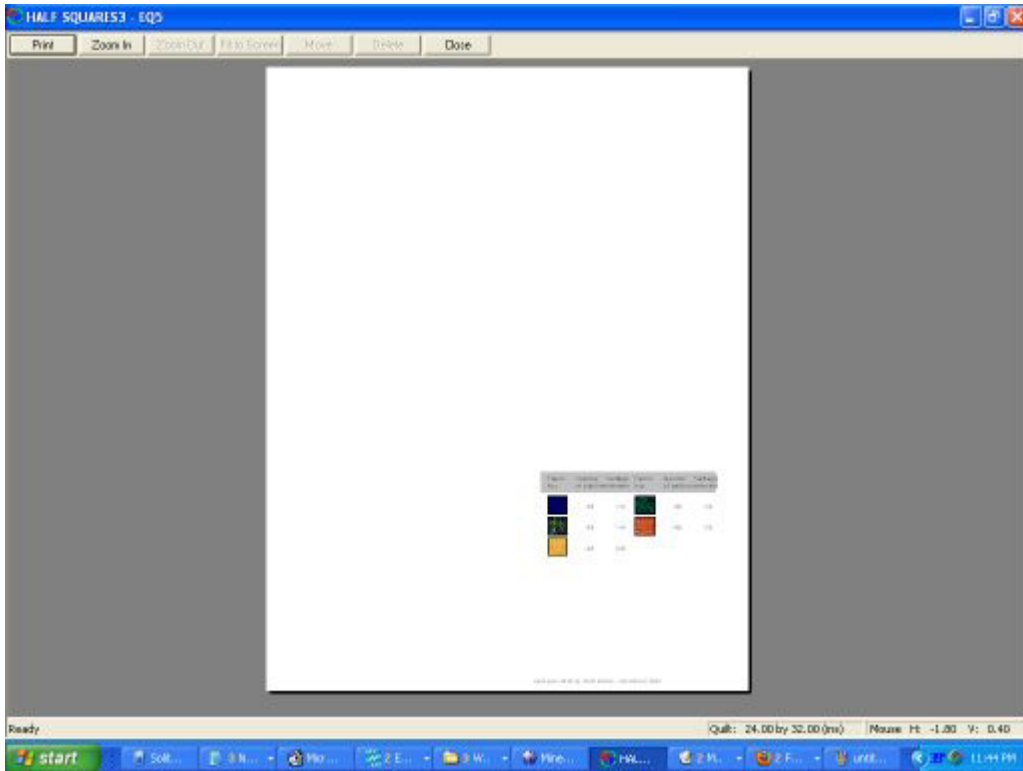
Now you should see this window.  
Make sure you put in the width of your fabric.



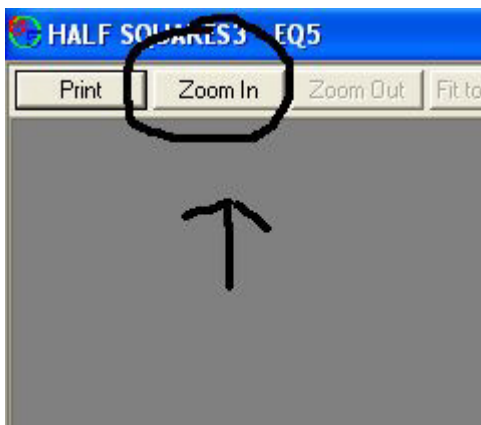
In the lower left corner click on Preview. You don't want to print yet.



Next you will see this.



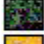




To be able to see it better Click on Zoom In.  
You will again see the magnifier glass icon



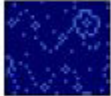




Go down to the fabrics and click just above the left corner  
 Hold it down and draw a box over the fabrics.

This will enlarge the picture.

Fabric key	Number of patchesestimate	Yardage	Fabric key	Number of patchesestimate	Yardage
	48	1/4		48	1/4
	48	1/4		48	1/4
	48	3/8			

Quilt size: 24.00 by 32.00 inches - Pincount: 10251

I would prefer to print it at this size but I haven't been able to.  
 You can print it and then enlarge it.

Fabric key	Number of patchesestimate	Yardage	Fabric key	Number of patchesestimate	Yardage
	48	1/4		48	1/4
	48	1/4		48	1/4
	48	3/8			

You can get the yardage for the backing by making the quilt all one color. Then follow the steps again to get the yardage.

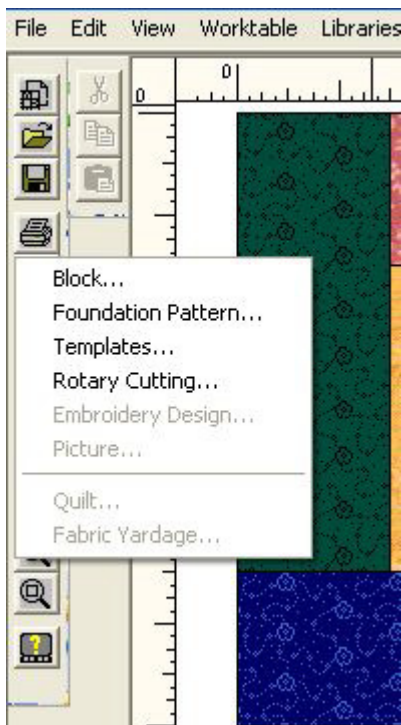
If you want binding figured you could add an extra border and make sure it is the right size. Color it a different color so it will figure the yardage on just that border. I believe most bindings are 2 1/2" wide and then the length of the quilt sides. So I would add a bit more on after you get the numbers.

-----

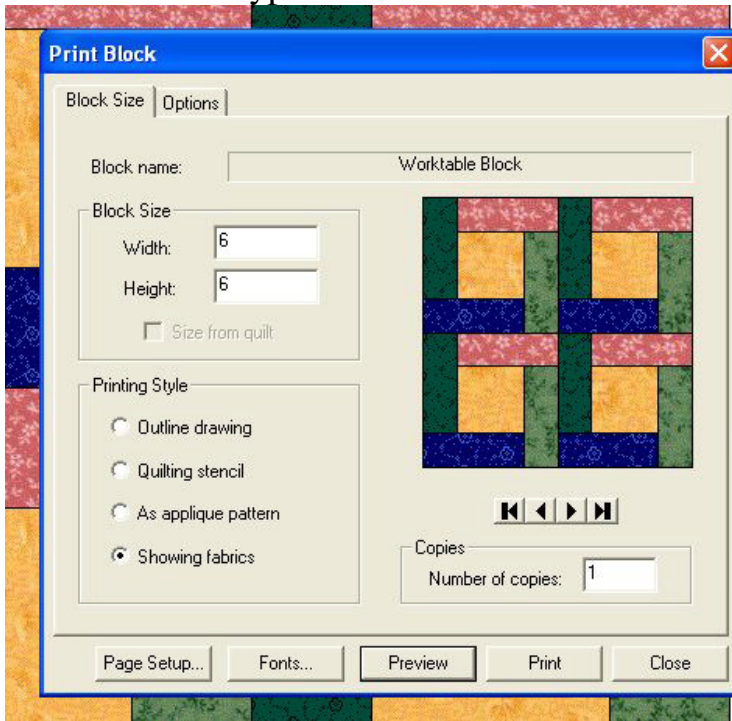
Now let's look at the Block

Put a block on the worktable  
When you click on the printer icon  
you get this menu

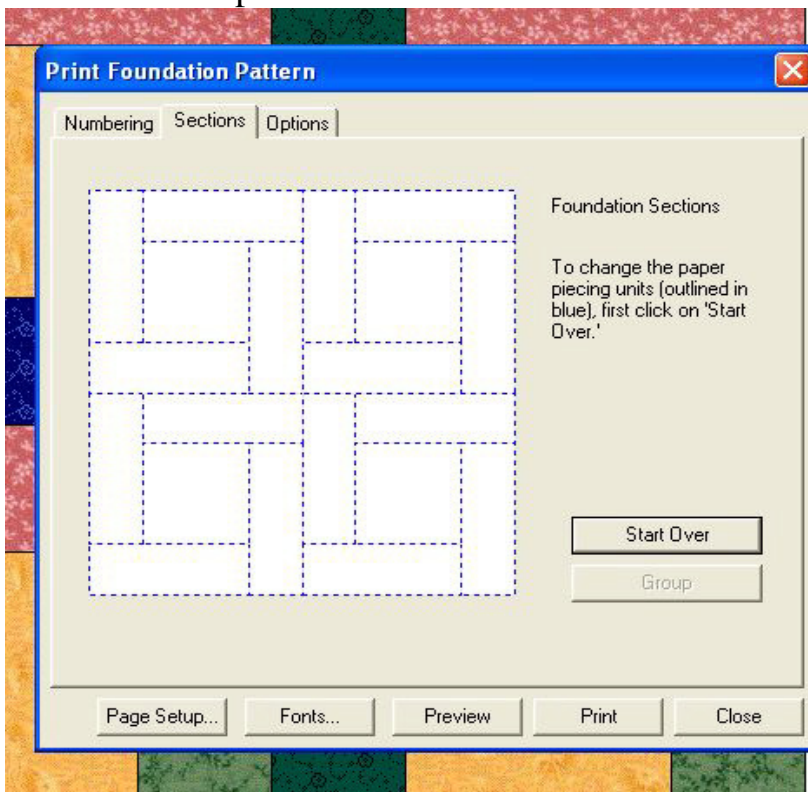
Click on Block



You will see this window. You need to set the size of your block and choose the type of block

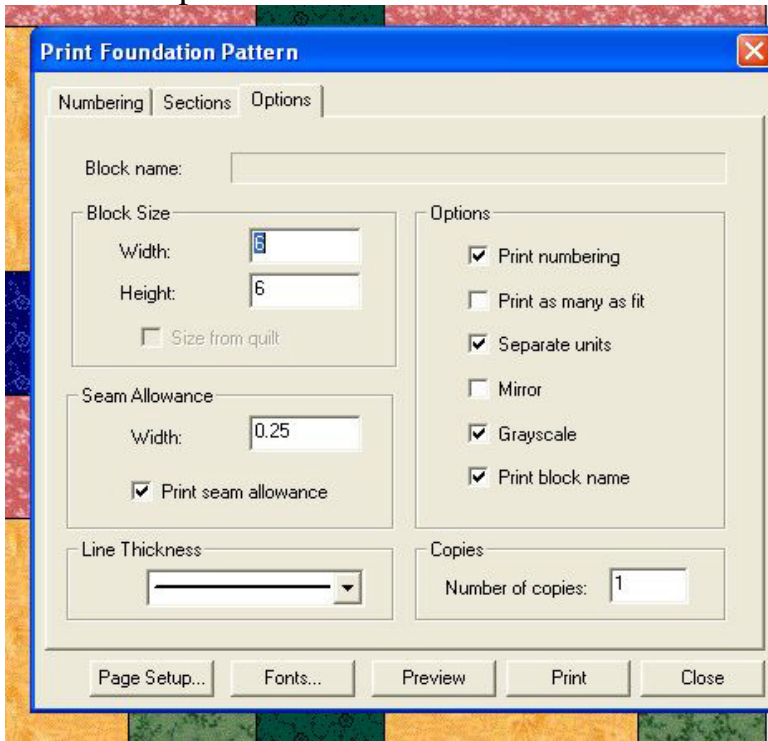


Now for printing a foundation for paper piecing  
Go back to the printer icon. Click on Foundation Patter

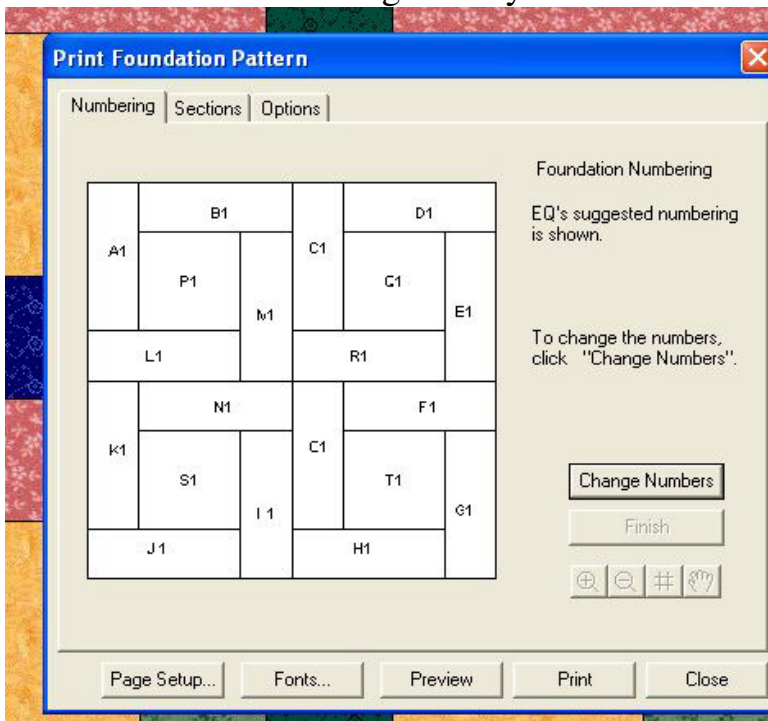




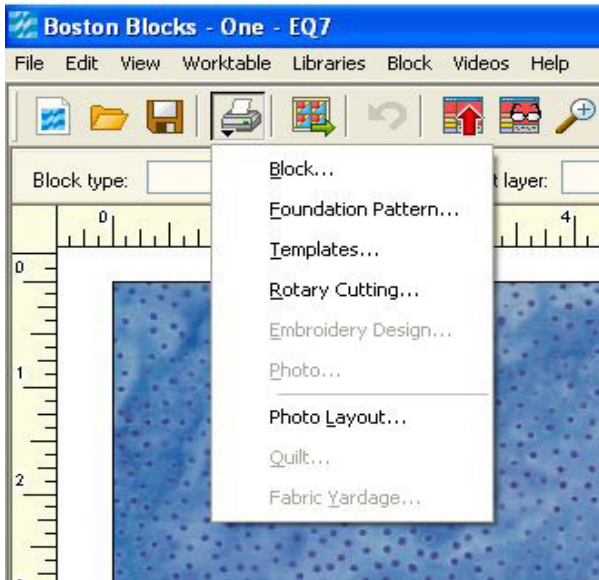
Set the size of your block and make sure all the options are the way you want them. Then you can click on preview and see the placement of your foundation pattern.



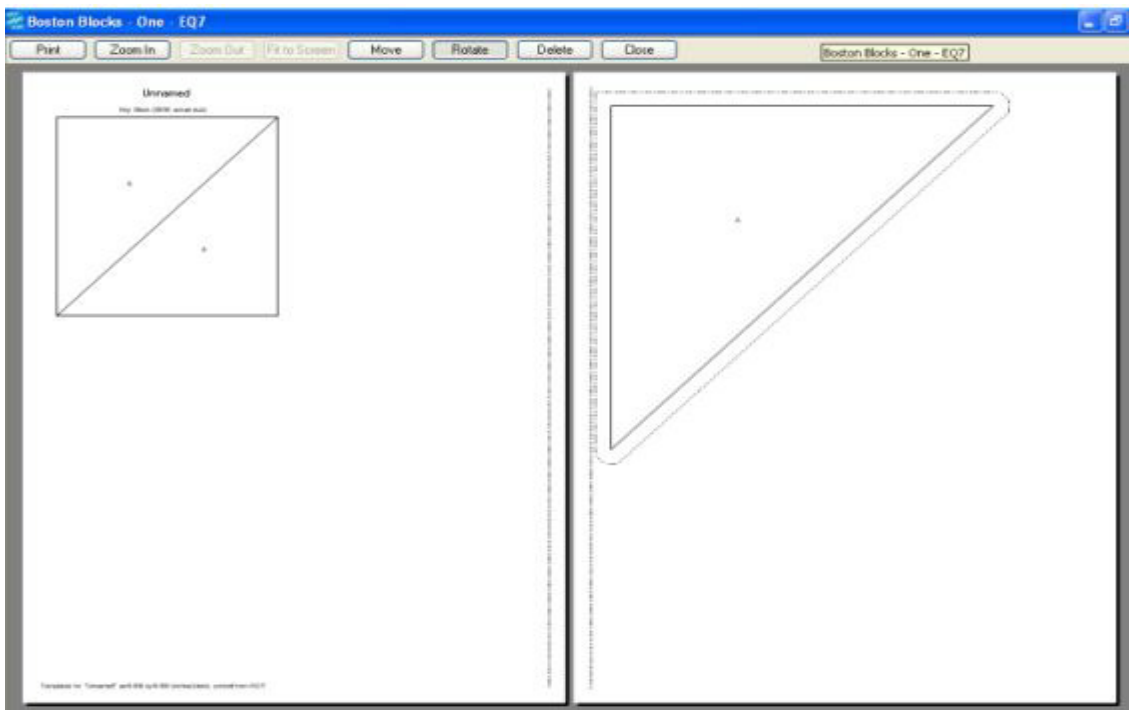
Now go back and click on Numbering. You will get this pattern there is a button on the right that you can click on to change the numbers



Now go back to the printer icon. I'm showing this one is in EQ7 but you can do the same in EQ6 or EQ5  
Click on Templates

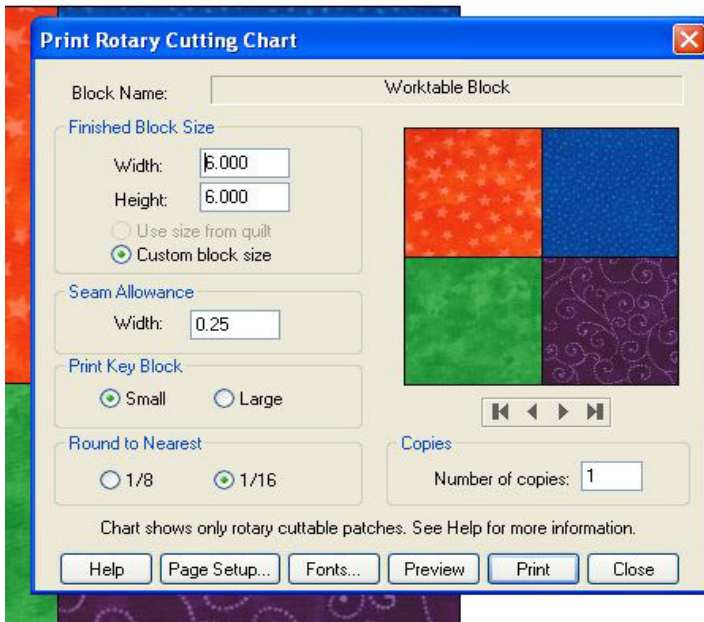


You will get the block laid out in templates

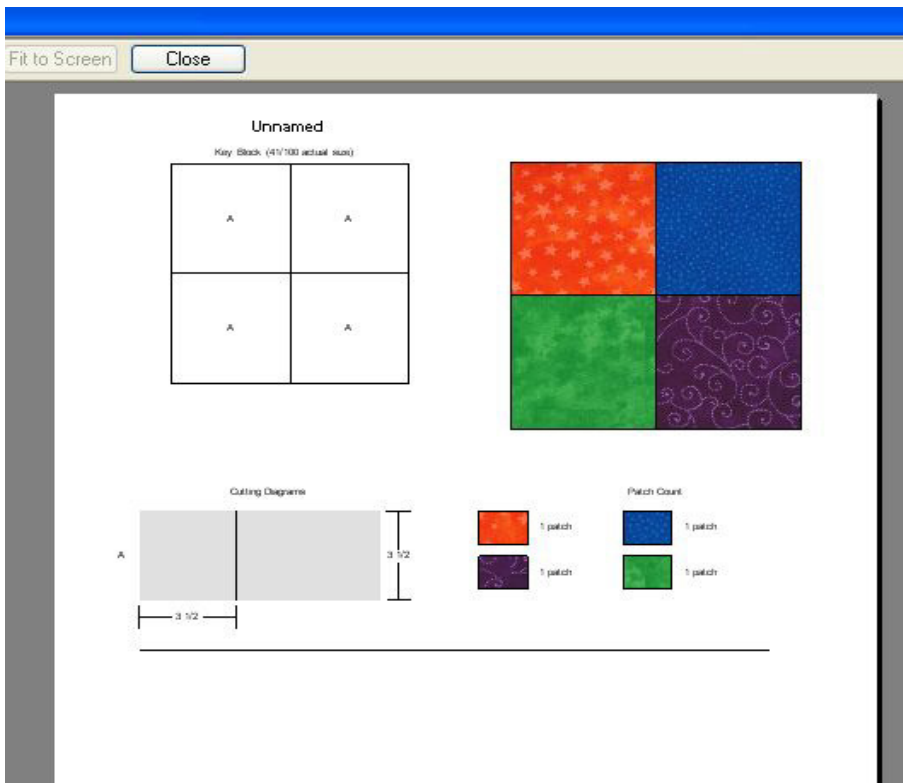




Now let's try out the rotary cutting click on Rotary Cutting



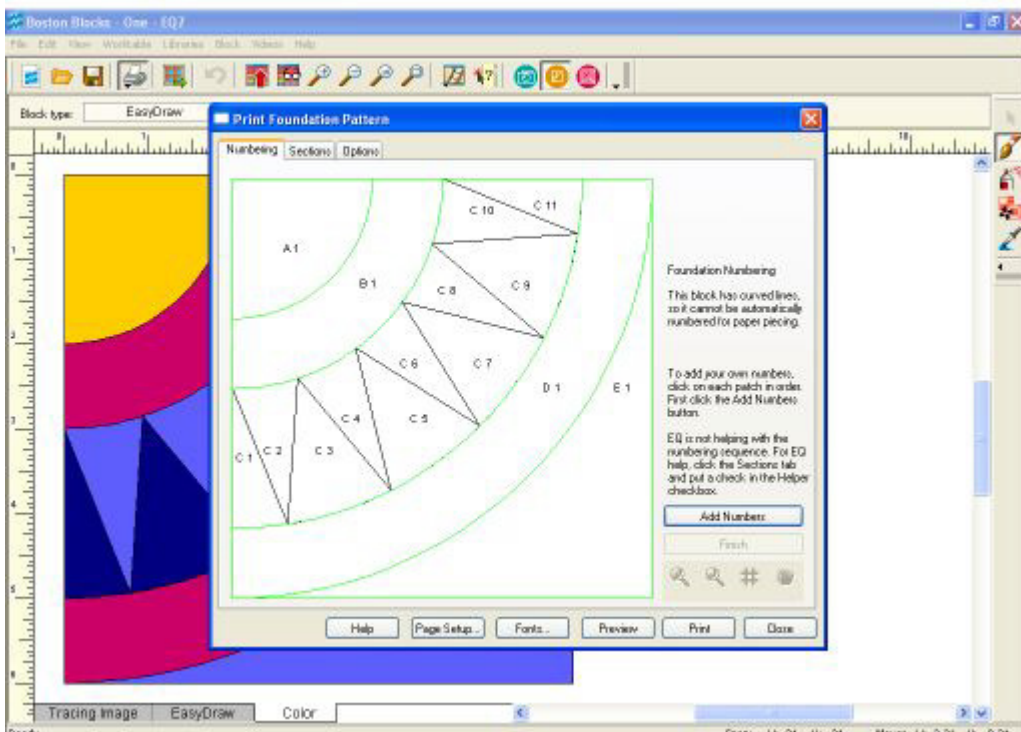
You will get this diagram to show you how you can cut out the pieces with a rotary cutter



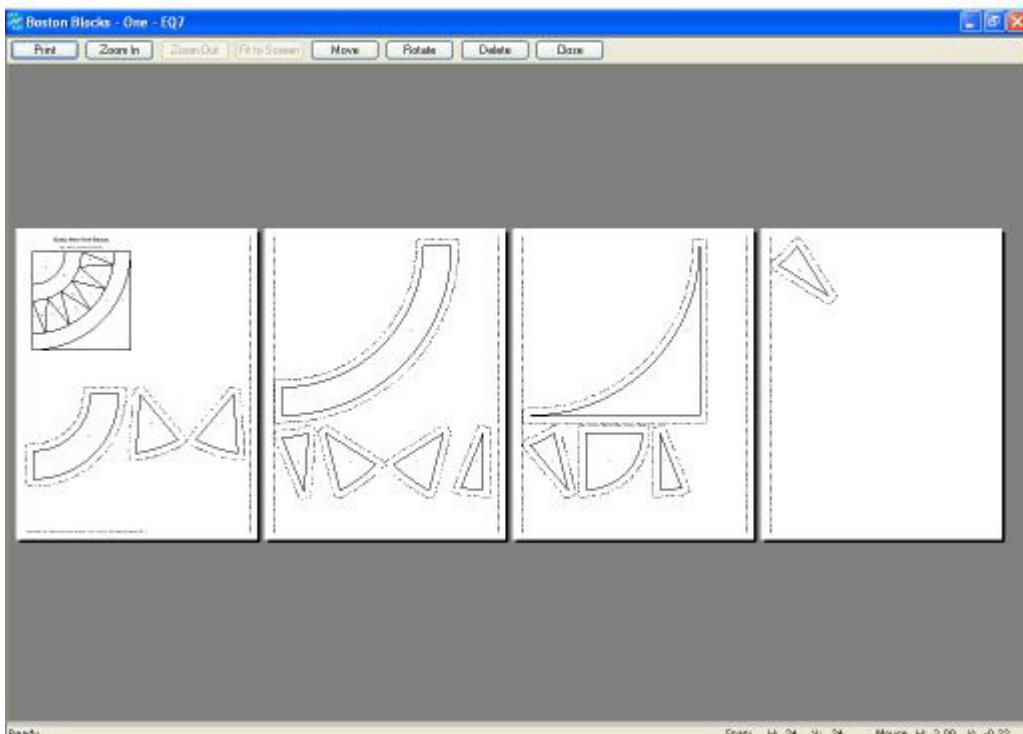
Once you have copied or imported the NY Beauty (in EQ6 and EQ7) into your sketchbook you just need to choose the NY as your block. This one is already in the library that comes with your EQ.

In EQ5 the closest I could come to a NY Beauty is in Contemporary Pieced and then choose Sun Compasses

Here is the New York Beauty to show you how it can show the foundation pattern



And here are the pieces shown as templates.



Hope this has been easy to follow. If you have any questions just let me know!