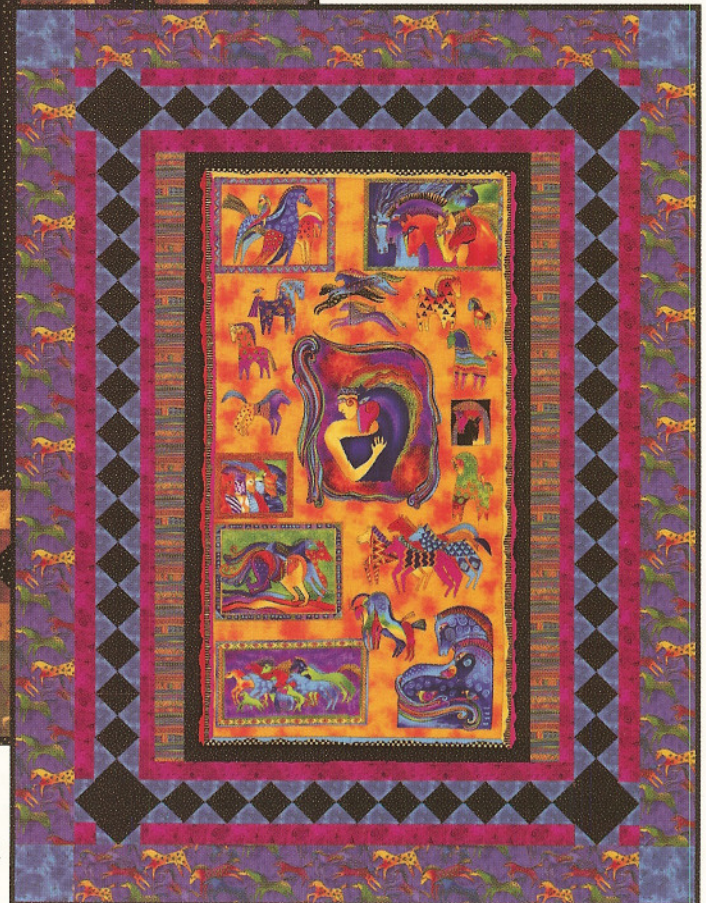


Mythical Horses

By Laurel Burch

Earthtones Version



Brights Version

Yardage:

Earthtones Version

Fabric A:
1 panel of 90301-2M
Fabric B:
1 yard of 90040-1M
Fabric C:
1/4 yard of 90307-2M
Fabric D:
5/8 yard of 90311-2
Fabric E:
1 yard 90311-4
Outer Border:
2 yards of 90309-2M
Binding:
1/2 yard of 90040-1M
Backing:
3-1/2 yards of your choice

Brights Version

Fabric A:
1 panel of 90301-1M
Fabric B:
1 yard of 90040-1M
Fabric C:
1/4 yard of 90307-1M
Fabric D:
5/8 yard of 90311-8
Fabric E:
1 yard 90311-1
Outer Border:
2 yards of 90309-3M
Binding:
1/2 yard of 90040-1M
Backing:
3-1/2 yards of your choice

Cutting:

Fabric A: Cut one panel 22" x 41".

Fabric B: Cut two 1-1/2" x 41" strips, two 1-1/2" x 24" strips, twenty-five 5-1/4" squares, four 3-1/2" squares and eight 2" x 3-1/2".

Fabric C: Cut two 2-1/2" x 43" strips.

Fabric D: Cut two 1-3/4" x 43" strips, two 1-3/4" x 30-1/2" strips, two 2" x 30-1/2" strips and four 1-1/2" squares. Cut three 2" x WOF strips. Piece them into two 2" x 45-1/2" strips.

Fabric E: Cut twenty-five 5-1/4" squares, four 4-1/2" squares and sixteen 2" squares.

Outer Border: Cut two 4-1/2" x 39-1/2" strips from the width of fabric and two 4-1/2" x 54-1/2" strips from the length of fabric.

Binding: Cut six 2-1/4" strips and piece them together for the binding.

Backing: Sew together into one 52" x 66" piece for the back.

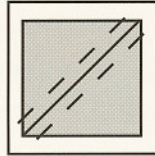


FIG. 1

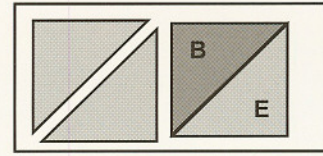


FIG. 2

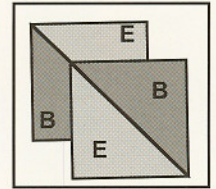


FIG. 3

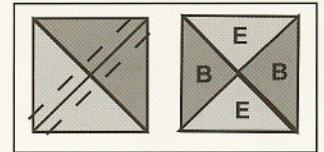


FIG. 4

Directions:

- Place one 5-1/4" Fabric B square on top of one 5-1/4" Fabric E square, right sides together. Draw a line across one diagonal of the top square. Sew 1/4" away from both sides of the drawn line (fig. 1). Cut on the drawn line to make two half-square triangles (fig. 2). Make fifty B/E half-square triangles. Trim them to measure 3-7/8" square.
- Place one B/E half-square triangle on top of one another B/E half-square triangle, right sides together. Make sure the center seam is going in the same direction on both half-square triangles and that Fabric B triangle is opposite from Fabric E (fig. 3). Draw a diagonal line across the top half-square triangle so that it goes through the sewn seam. Sew 1/4" away from both sides of the drawn line (fig. 4). Cut on the drawn line to make two quarter-square triangles (fig. 4). Make fifty quarter-square triangles total.
- Following the quilt photo, sew fifteen quarter-square triangles together to make one side border. Make two total. Sew ten quarter-square triangles together for the top and bottom borders. Make two total.
- Sew one 1-1/2" x 41" Fabric B strip to each side of the Fabric A Panel. Sew one 1-1/2" x 24" strip to the top and bottom of the Fabric A Panel to make the quilt top.
- Sew one 2-1/2" x 43" Fabric C strip to each side of the quilt top.
- Sew one 1-3/4" x 43" Fabric D strip to each side of the quilt top. Sew one 1-3/4" x 30-1/2" strip to the top and bottom of the quilt top.
- Sew one side border from Step 3 to each side of the quilt top.
- Sew one 3-1/2" Fabric B square to each end of the top and bottom borders from Step 3. Sew the top and bottom borders to the quilt top.
- Place one 2" Fabric E square on the top left side of one 2" x 3-1/2" Fabric B strip, right sides together (Fig. 5). Mark and sew across the diagonal from the upper right corner to the lower left corner (Fig. 5). Open out the triangle formed and finger press the seam open (Fig. 6). Check that the corners are aligned squarely. Flip the triangle back down and trim away the excess fabric approximately 1/4" for the seam allowance.
- Place another 2" Fabric E square on the top right side of the 2" x 3-1/2" Fabric B strip, right sides together (Fig. 7). Mark and sew across the diagonal from the upper left corner to the lower right corner (Fig. 7).
- Repeat Steps 9 & 10 to make eight flying geese.
- Following the quilt photo, sew one flying goose piece to each end of the two 2" x 45-1/2" Fabric D strips. Sew one strip each side of the quilt top.
- Sew one flying goose piece to each end of the two 2" x 30-1/2" Fabric D strips. Sew one 2" Fabric D square to the other side of the flying goose piece to make the top and bottom border. Sew the top and bottom borders to the quilt top.
- Sew one 4-1/2" x 54-1/2" Outer Border to each side of the quilt top.
- Sew one 4-1/2" Fabric E square to each end of the two 4-1/2" x 39-1/2" Outer Border strips. Sew the top and bottom Outer Border to the quilt top.
- Layer, quilt and bind as desired.



FIG. 5



FIG. 6



FIG. 7

While every attempt has been made to give accurate measurements, yardage requirements and construction directions, this does not allow for personal variations in measuring, cutting and/or sewing. Clothworks is not responsible for printing errors.