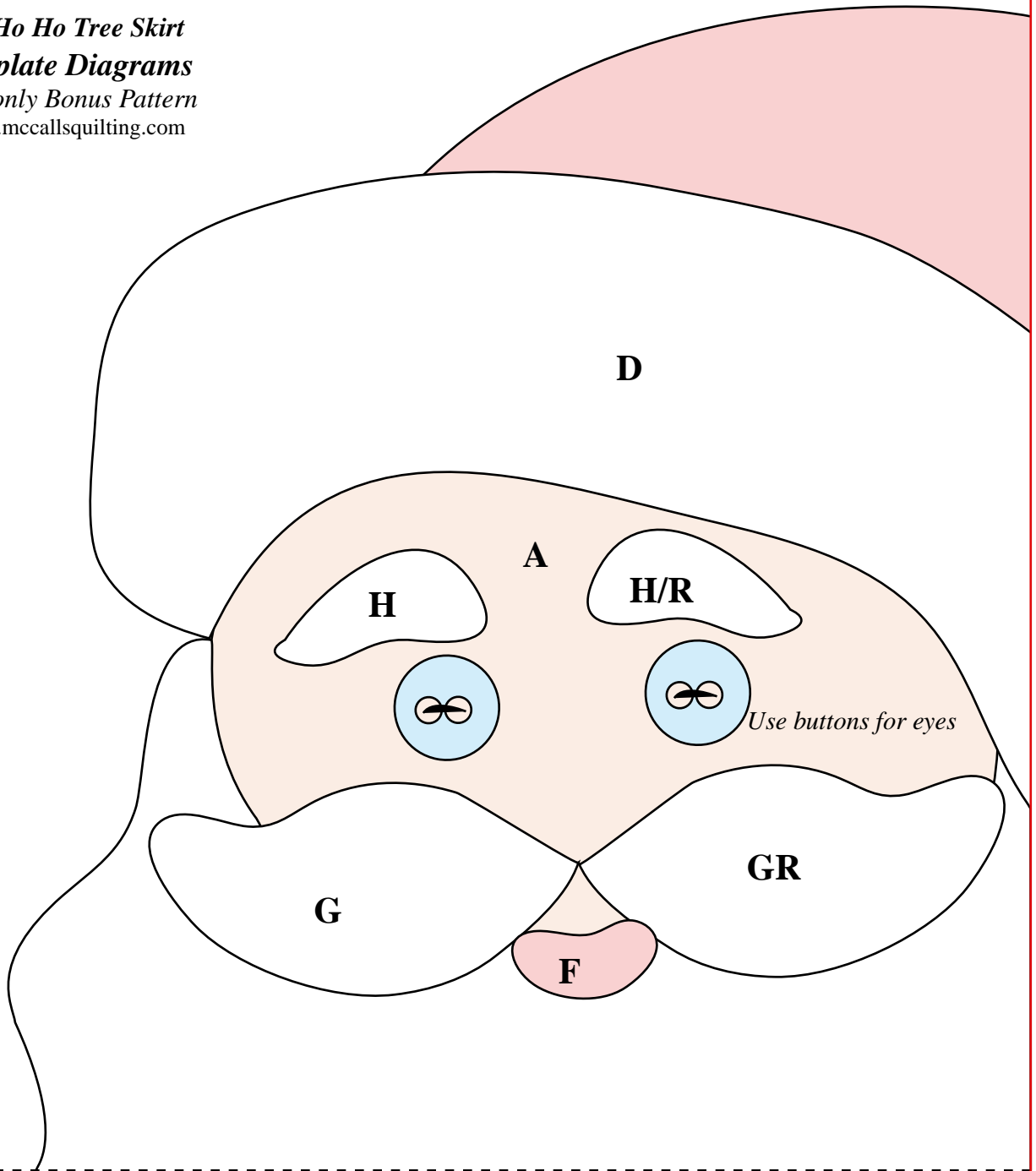


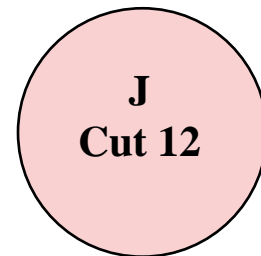
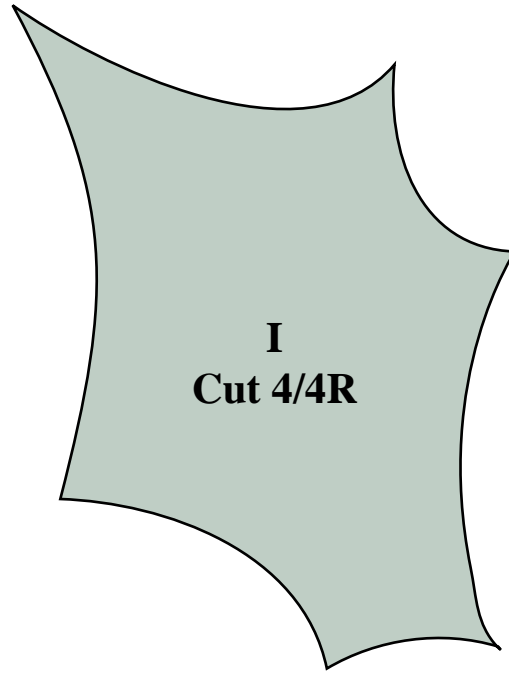
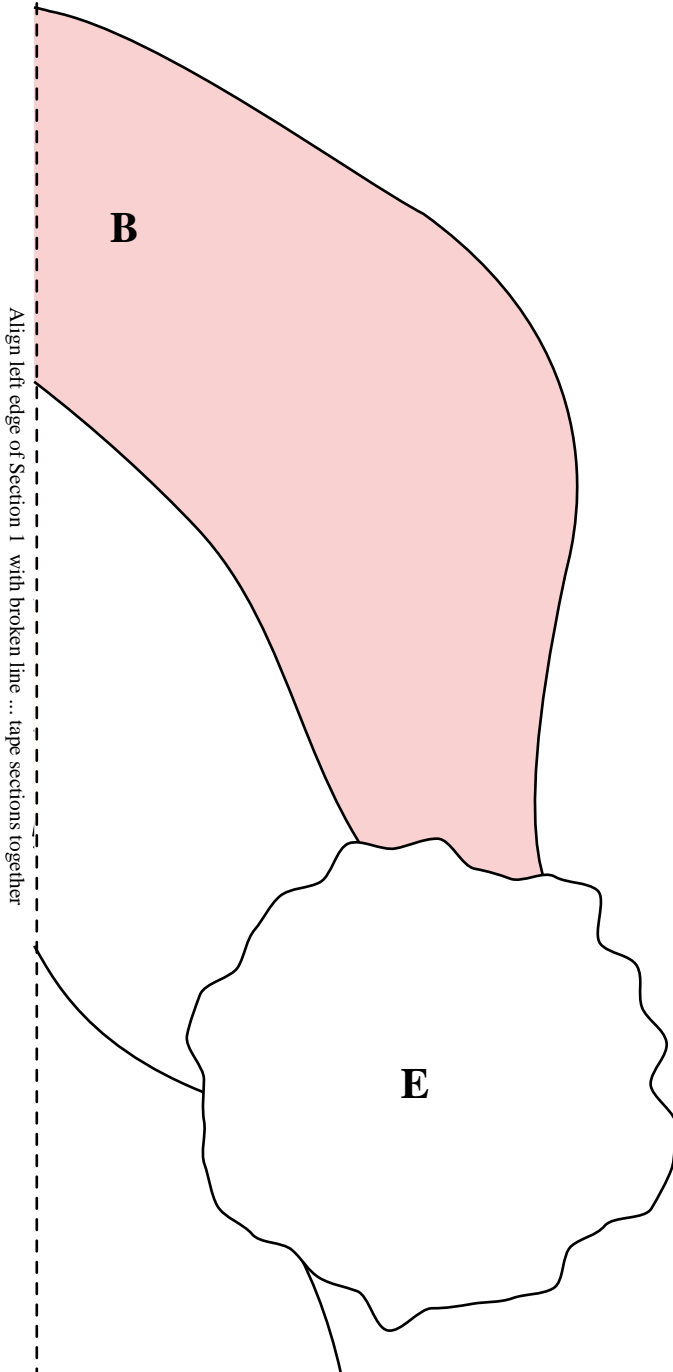
Section 1

Ho Ho Ho Tree Skirt
Template Diagrams
Web-only Bonus Pattern
www.mccallsquilting.com



Align top of taped sections 3-4 with broken line ... tape together

Templates are printed reversed and without seam allowance for use with paper-backed fusible web.





C

Directions for Assembling Template Diagrams Drawing

Paper cutting scissors and transparent tape will be needed when assembling Santa appliqué drawing.

Step 1. Using paper cutting scissors, cut out Sections 1 through 4 using red lines as guide.

Step 2. Tape Section 1 to Section 2, using broken line as alignment guide. Note: When taping the sections together, align the appliqué lines, rather than the top and/or bottom of the two sections. The sections may vary a little in size, depending on how accurately they are printed and cut out. A little variance in section size is okay ... it will not affect alignment of the appliqué lines

Step 3. Tape Section 3 to Section 4.

Step 4. Tape Sections 1-2 to 3-4 to make Template Diagrams Drawing.



K
Tree Skirt
Center Opening
Cutting Guide

Align left edge of Section 3 with broken line ... tape sections together