

Piec-liqué Basic Circle



This class is about the basics of Piec-liqué.

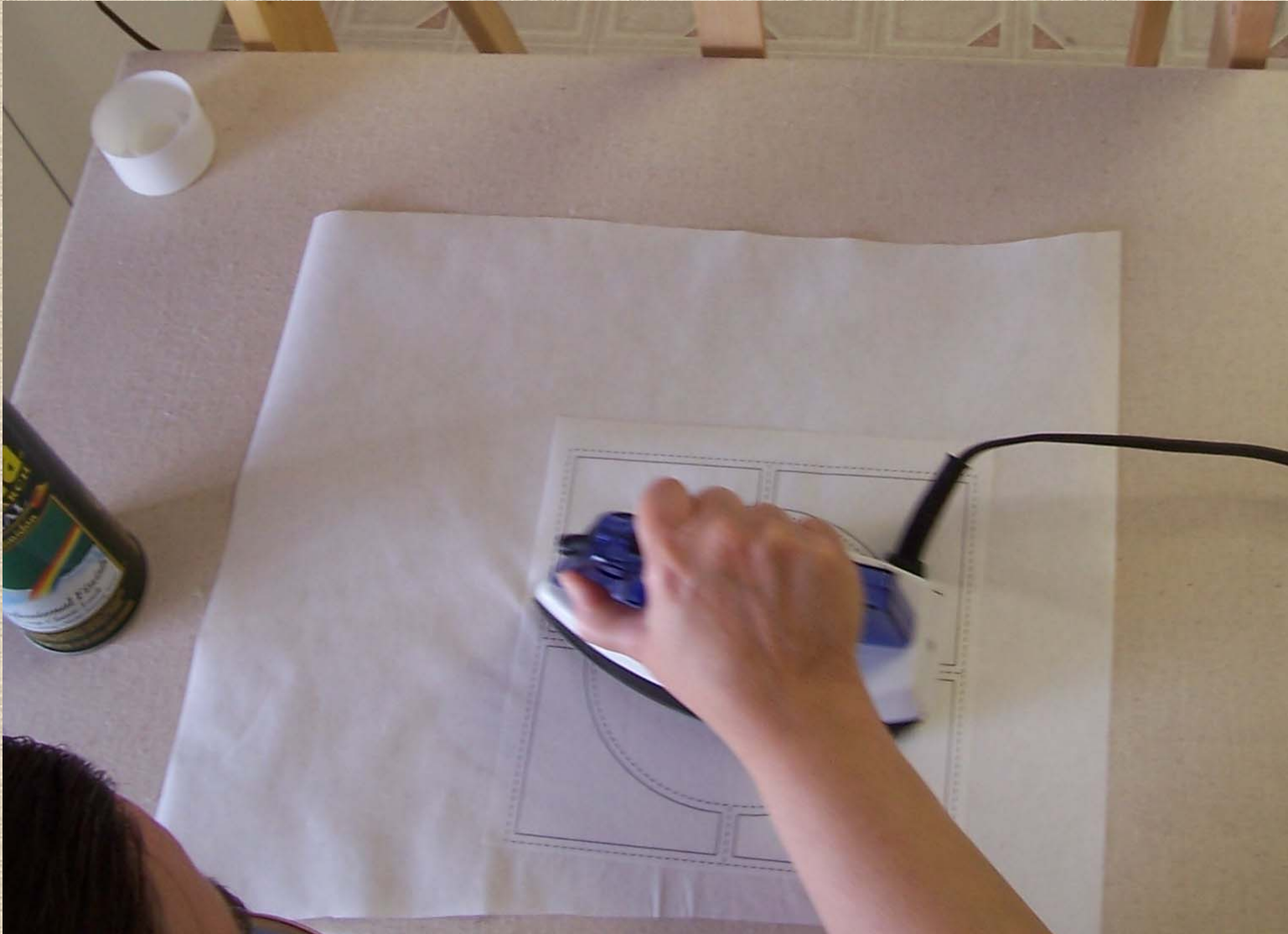
Pre-shrinking the Freezer Paper



Freezer paper shrinks. Yes that is right it shrinks!!! You need to take care of this problem before the pattern is transferred to the freezer paper.

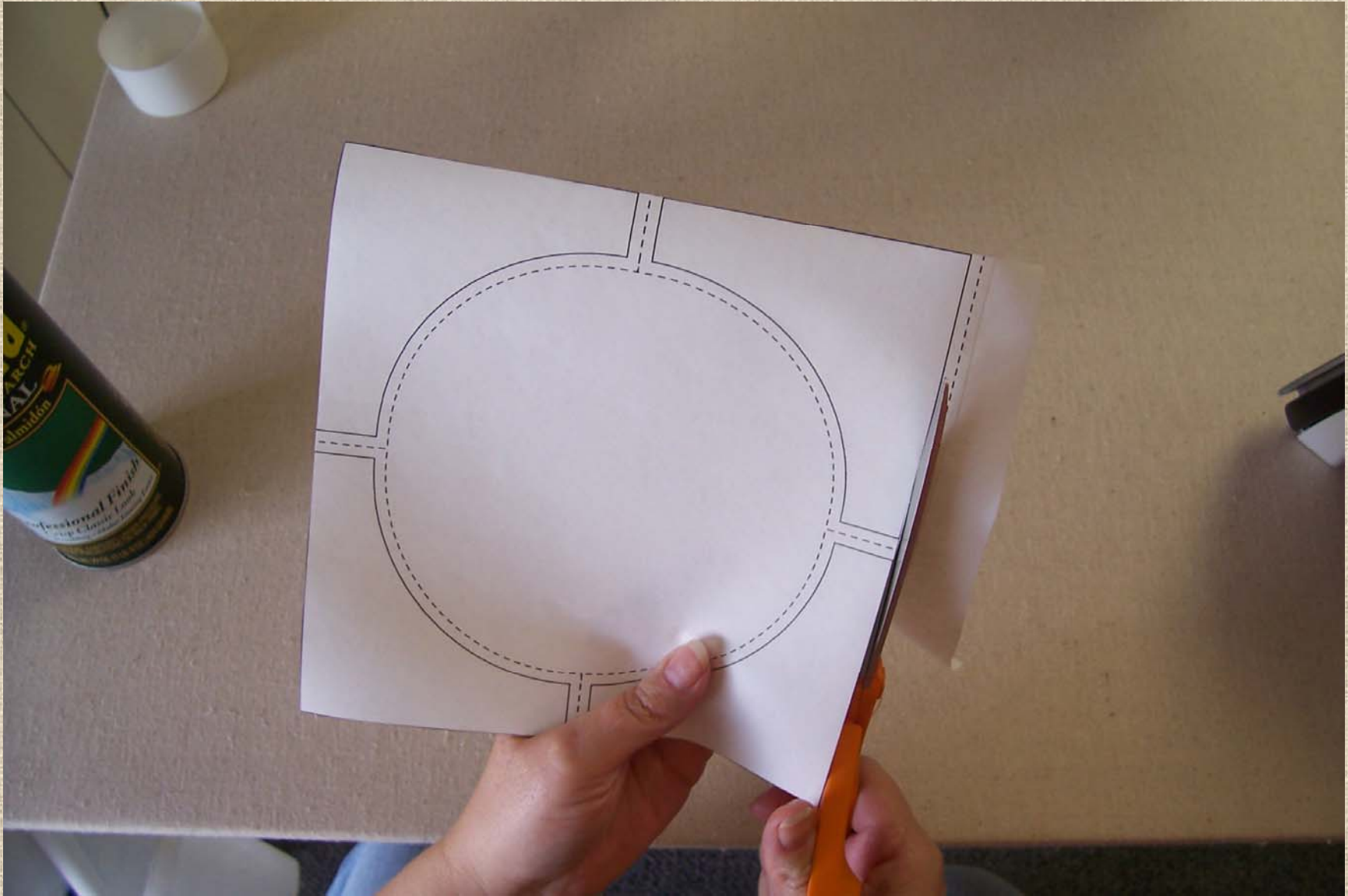
Lightly spray regular spray starch on the freezer paper and press. Notice on the right how the paper is flat and shrinks in. Prepare 2 sheets of paper. Then transfer your pattern to one of them.

Making Template



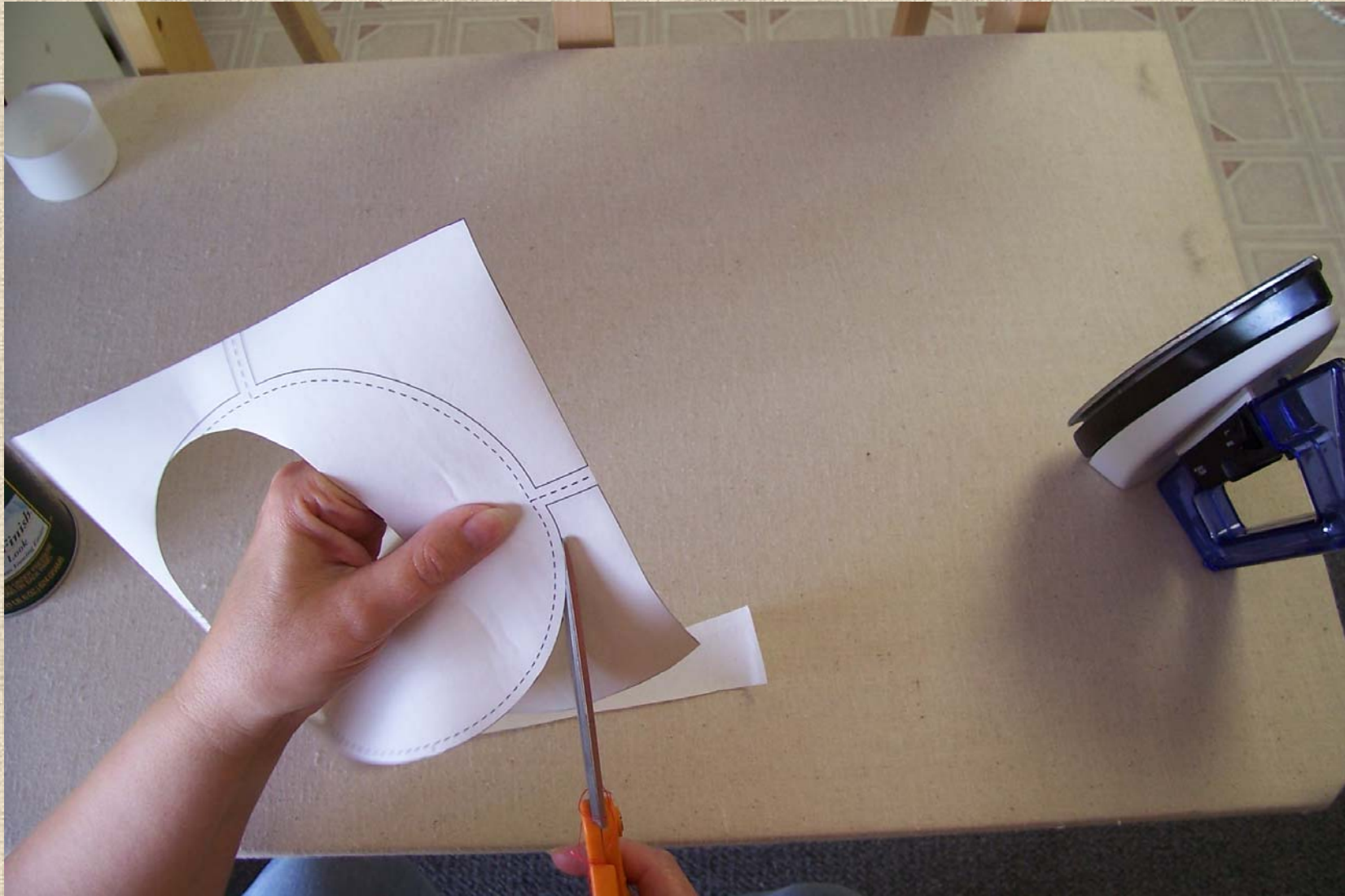
Press the traced pattern on top of the second piece of freezer paper. You will want to use a really hot dry iron and a hard pressing surface.

Making The Template



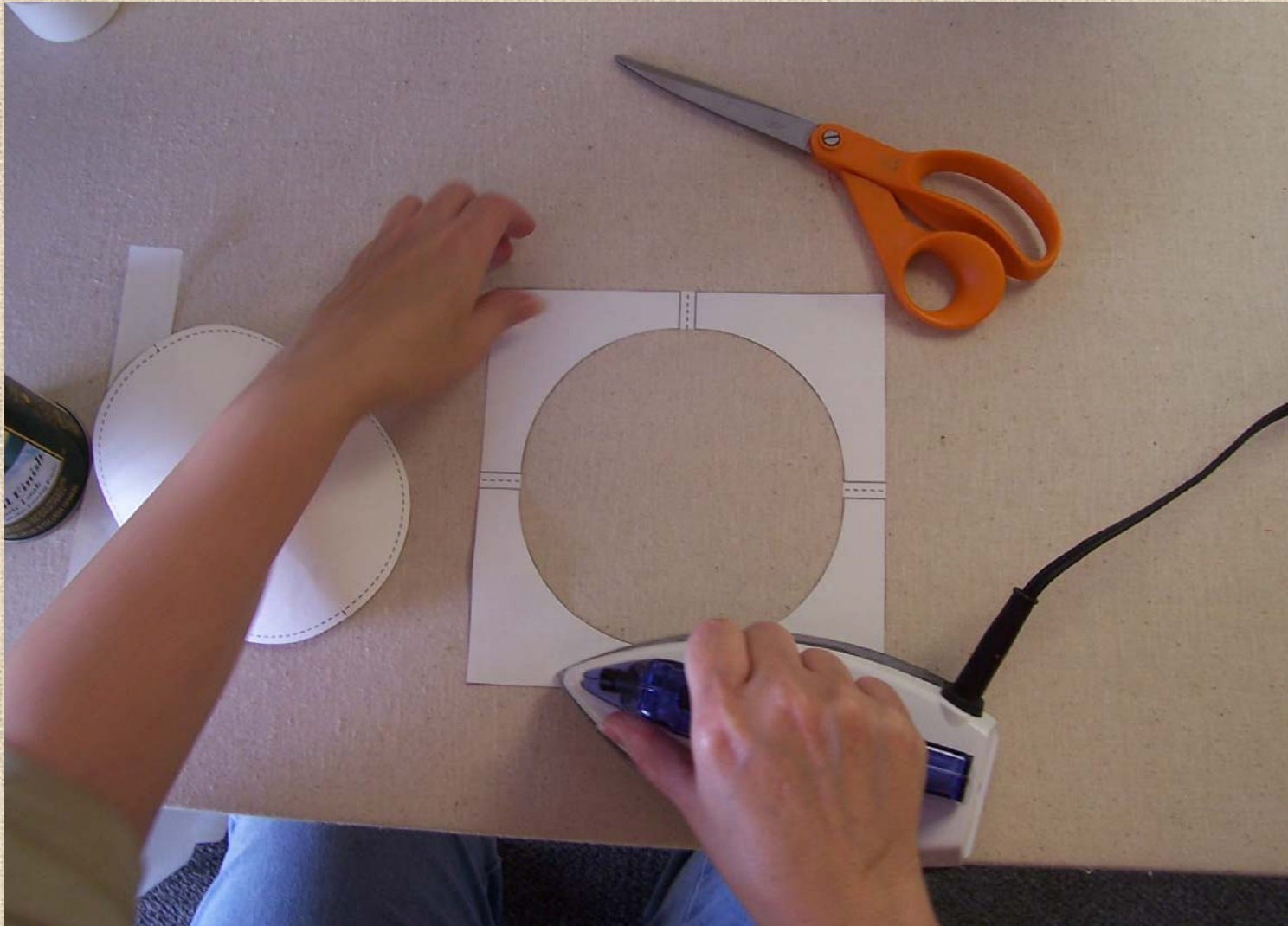
Trim your pattern on the finish line (not the dotted line). Trim it with a smooth cut line any imperfections will show up in your block.

Making The Template



Trim your pattern on the finish line. Cut the center of the circle out on the finish line. The center will not be used so discard it. Keep the outside pattern intact. DO NOT CUT THROUGH IT. IT NEEDS TO BE WHOLE.

Making The Template



Press the pattern flat.

I CAN'T STRESS THIS ENOUGH YOU NEED A HARD PRESSING SURFACE.

I HAD MY CUSTOM MADE FROM:

www.throwingpigment.com

Pressing the Template to the Fabric



Press the template to the WRONG side of the fabric, because it is freezer paper, it will adhere to the fabric.

Cutting



Cut the outside of the template leaving at least $\frac{3}{4}$ "

Cutting



Cut the center out. Leaving approximately a 1/2" seam allowance.

Clipping the Center Seam



Clip every $\frac{1}{4}$ " on the center seam allowance. When you clip don't clip right up to the template leave a few threads. If you are working with a smaller circle you will need to make your clips closer, or when working with a larger circle, make them further apart.

Turning the Center Seam Allowance



**Spray some starch in a jar or the starch lid. Let the bubbles go down.
Use a med (3/8 in) size stencil brush. Saturate it with starch.
Paint some starch on the seam allowance of the circle.**

Turning the Center Seam Allowance



While the starch is still wet, lightly pull the seam allowance back against the template. Press dry as you go around the circle. Make sure to not press any kinks in the fold line.

Turning the Center Seam Allowance



Before the block cools, pull the freezer paper off.

Close Up of Turned Edge



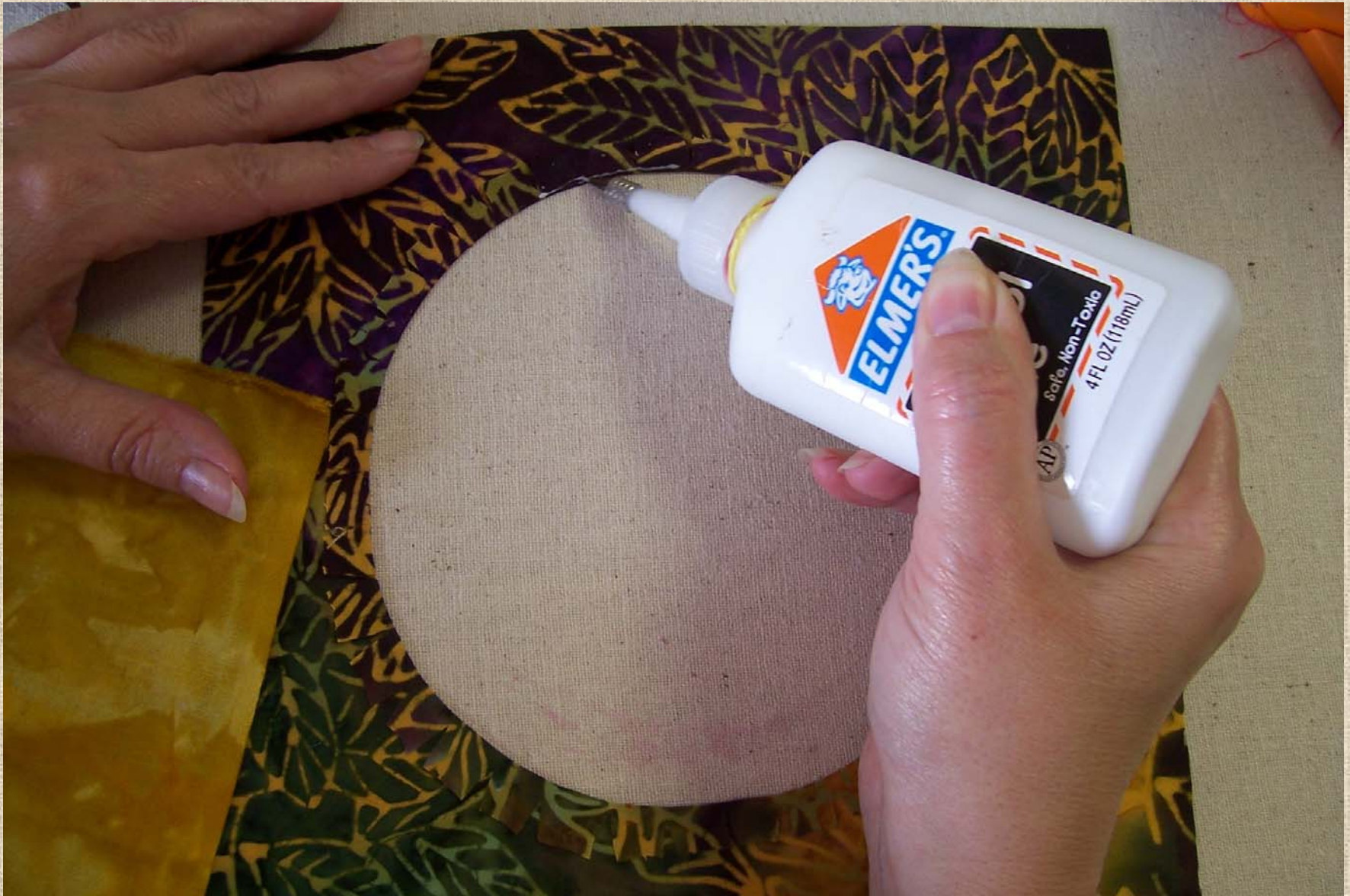
Lightly block back into shape with your iron.

Cut Fabric for Center



Cut a square of fabric at least 2" bigger than the center circle.

Glue Basting



I use Elmer's school glue and a painting tip that you can buy at any craft store.

Glue Basting



Paint a fine line of glue on the pressed edge.

Glue Basting



While the glue is still wet. HEAT set the glue with your iron.

Right Side of the Block



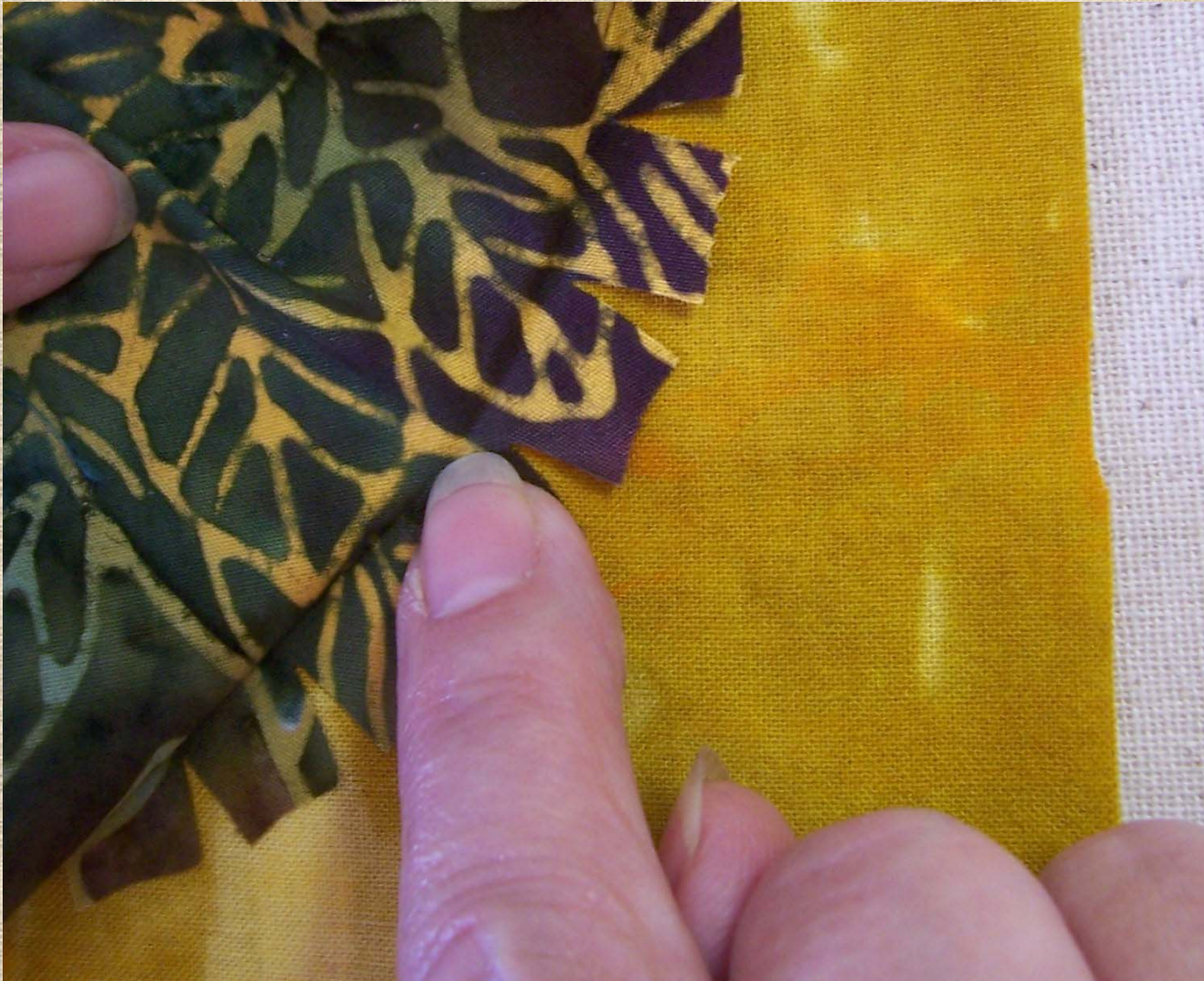
Turn the block with the right side up.

Right Side of the Block



**Pull the outside area of the block up. You will see a fold line.
That is where you will sew. WAY COOL!!!!**

Sewing on the Fold Line



Sew on the fold line. Mark with a white marking pencil if you can't see the line. When you starch/glue and heat set, the biases are stable and won't distort in the sewing process.

Sewing on the Fold Line



Sew on the fold line.

Sewing Close Up



Sew on the fold line.

Sewing Close Up



Sew the entire circle.

Trimming Seam Allowance



Trim the seam allowance at $\frac{1}{4}$ ".

Trimming Seam Allowance



Trim the seam allowance at $\frac{1}{4}$ ".

Press Block



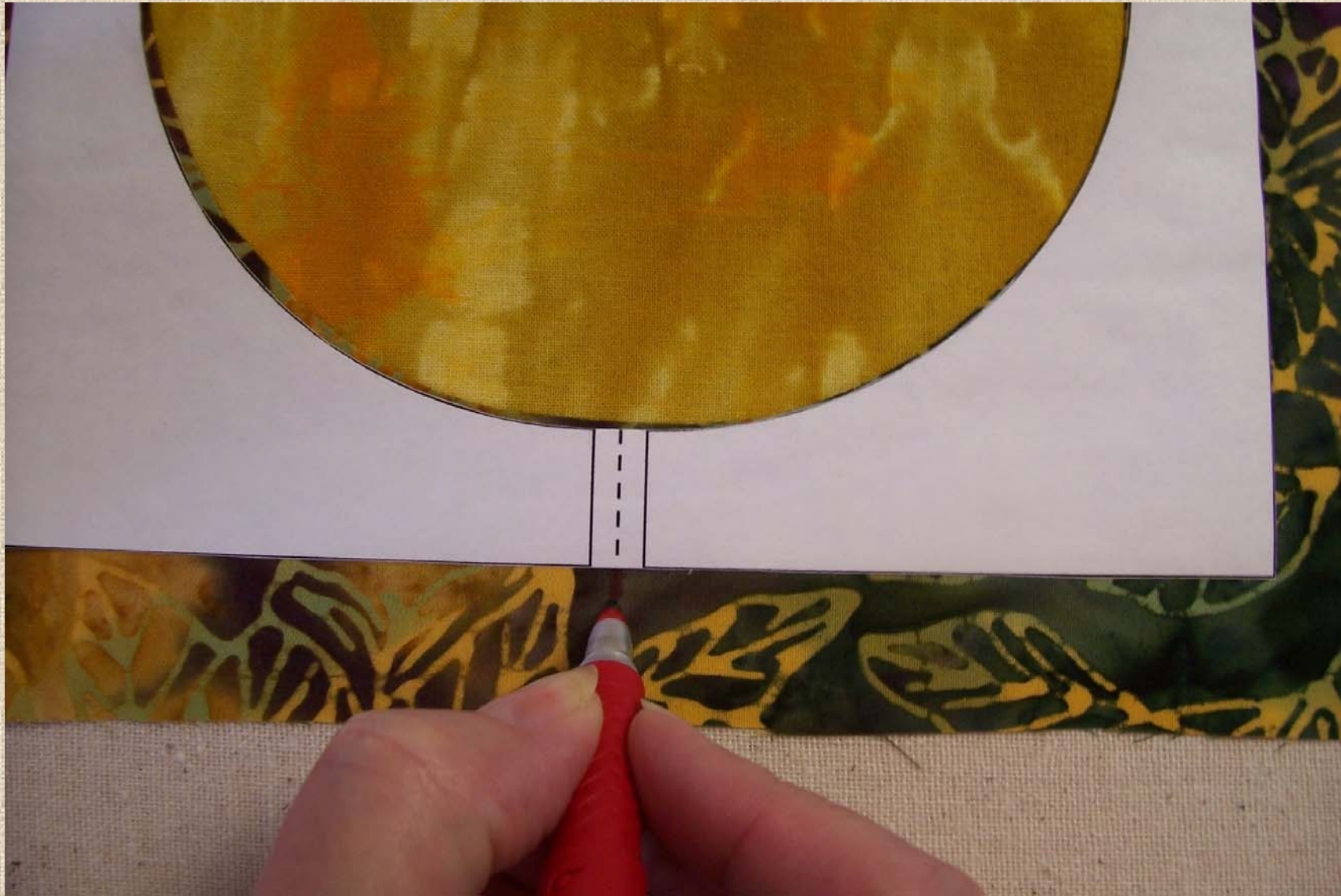
Press from the right side.

Marking The Centers



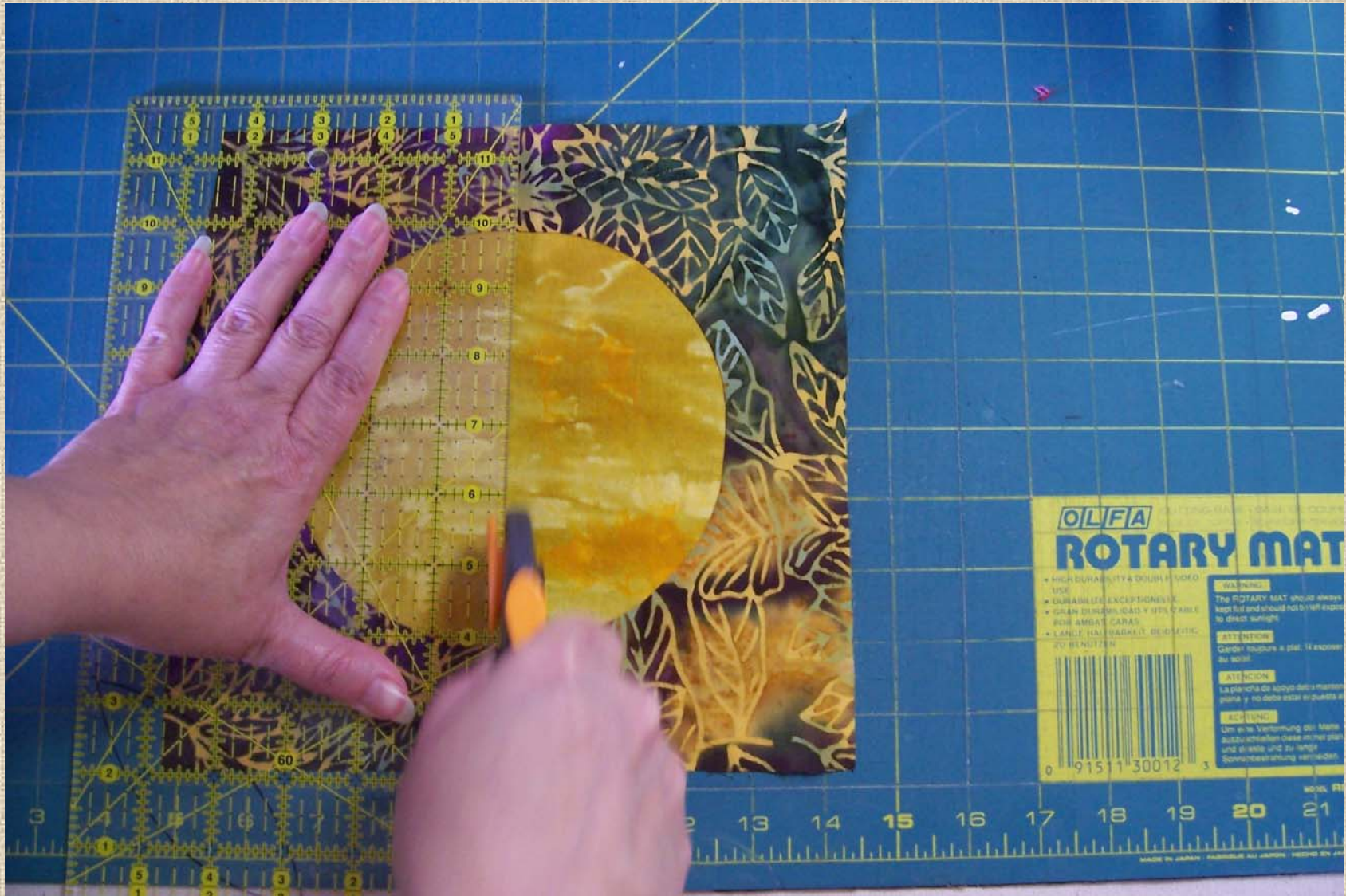
Press the pattern back on the block.

Marking The Centers



Mark the centers on all four sides.

Cut Through the Center On the Marks



Cut through the marks down the center.

Cut Through the Center On the Marks



This block makes four Drunkards Path blocks.

Cut Through the Center On the Marks



True up the block to the desired size from the center.

Cut Through the Center On the Marks



True up the block to the desired size from the center.