



Flora and fauna

FOUR PIECED tulips joined by a nine-patch and surrounded by fans and birds make up this colourful wall-hanging, called "Flora and fauna". Hearts and flowers are appliquéd after the blocks have been assembled and there is no

This wall-hanging by Anja Townrow includes pieced tulips and appliquéd birds and flowers

curved piecing as the fans are sewn to the background with a decorative trim. Use your brightest scraps

for a summery look.

Size
39in x 39in.

Method

Cut out the pieces as listed in the box overleaf.

Tulip

1. Lay out the pieces for one tulip. Check that the marks across the seamlines correspond before you start

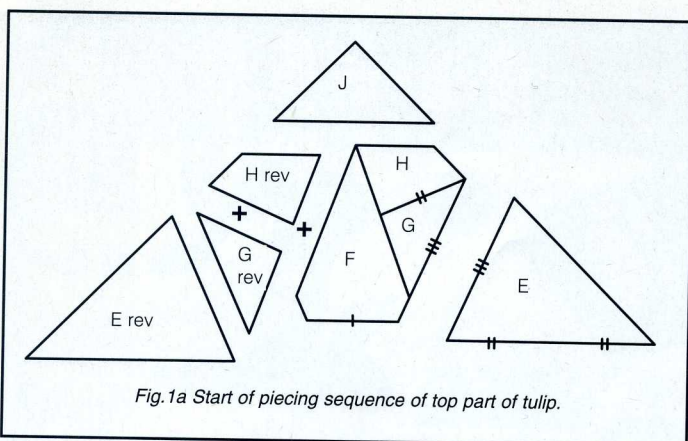


Fig.1a Start of piecing sequence of top part of tulip.

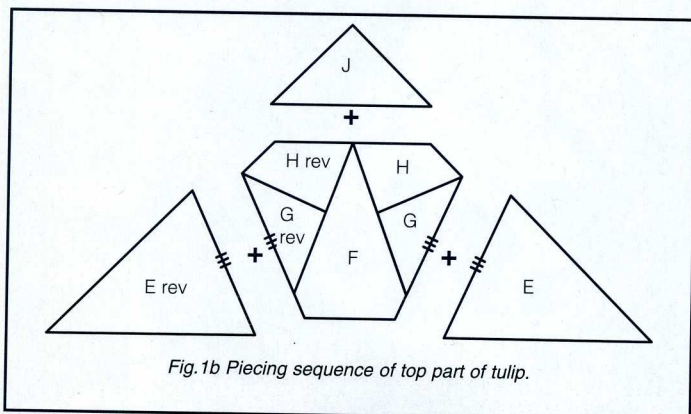


Fig.1b Piecing sequence of top part of tulip.

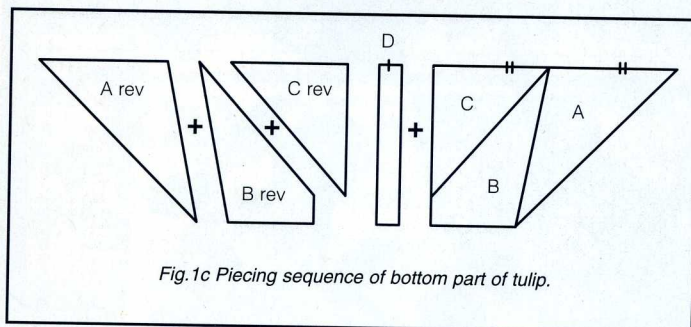


Fig.1c Piecing sequence of bottom part of tulip.

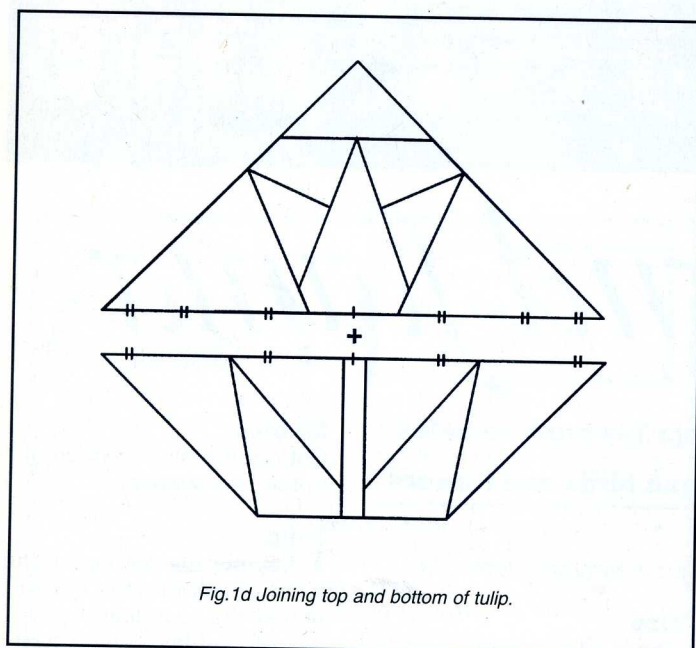


Fig.1d Joining top and bottom of tulip.

Materials for flora quilt...

- ❖ 1m of light background fabric.
- ❖ 1/2m of medium background fabric.
- ❖ Eighths or scraps of red, orange, yellow, pink, blue, purple and at least four different greens.
- ❖ 1m of fabric for border.
- ❖ 0.25m of fabric for binding.
- ❖ 0.5m of Bondaweb – for machine appliqué.
- ❖ 0.5m of Stitch 'n Tear – for machine appliqué.
- ❖ Two 8 1/2in squares of tracing paper.
- ❖ 42in x 42in of 2oz wadding.
- ❖ 42in x 42in of backing fabric.
- ❖ Four beads or buttons for the eyes.
- ❖ 4m of ric-rac braid or other decorative trim – for the fans.

Pieces for flora quilt...

Medium background fabric:

- ❖ 4 A, then reverse template and cut 4 more.
- ❖ 4 C, then reverse template and cut 4 more.

Light background fabric:

- ❖ 4 E, then reverse template and cut 4 more.
- ❖ 4 H, then reverse template and cut 4 more.
- ❖ 4 J.
- ❖ 12 K – background blocks for the fans and birds.

Green fabrics:

Cut the following from each of four different greens:

- ❖ 1 B, then reverse template and cut 1 more (tulip leaves).
- ❖ 1 D (tulip stem).

From assorted colours:

- ❖ 48 M (pieces of fan).
- ❖ 9 Z (squares for nine-patch).

Yellow/orange fabric:

- ❖ 4 F (centre of tulip).

Red fabric:

- ❖ 4 G, then reverse template and cut 4 more (outside petals of tulip).

Border fabric:

- ❖ 4 strips each 4in wide and length of fabric; this allows for matching at corners.

For appliqué

Green scraps:

- ❖ 32 Y (leaves).

Blue fabrics:

- ❖ 2 W, then reverse template and cut 2 more (bird).
- ❖ 4 T (hearts).
- ❖ 8 R (flower centres).

Pink fabrics:

- ❖ 2 V, then reverse template and cut 2 more (bird's wings).
- ❖ 2 Q (flowers).
- ❖ 2 QQ (flower centre).

Orange scraps:

- ❖ 4 S (bird's beak).
- ❖ 2 P (flowers).

Red fabric:

- ❖ 8RR (flower).



to sew. The tulip is constructed in two halves (Fig. 1 and d). In this design the seams need to be pressed towards the background fabric to achieve sharp points. Careful trimming of seam allowances is necessary to ensure no dark fabric shows through.

Top half

1. Sew H to G and H reverse to G reverse, matching marks across seamlines. Sew HG and HG reverse to either side of F (Fig. 1a). Sew E to HGF and E reverse to HGF reverse. Sew J to H and H reverse (Fig. 1b).

Bottom half

1. Sew B to C and B reverse to C reverse. Sew A to BC and A reverse to BC reverse. Sew ABC and ABC reverse to either side of D (Fig. 1c). 2. Sew halves together (Fig. 1d) and press seam towards top half.



Nine-patch

1. Sew three Z pieces together to make a row (Fig. 2). Make three rows, then join into a nine-patch (Fig. 2). Press seams to one side.

Fan

1. Join M pieces in pairs, then sew three pairs together to make a fan (Fig. 3). Make eight fans, pressing seams to one side. 2. Trace the fan placement guide (page 37) on to a square of tracing paper. Place a pieced fan right side up on the right side of a background square K. Place the tracing on top, matching outside seamlines on the block, and adjust the placement of the fan until it corresponds with the tracing. Pin securely and sew the fan to the background with a narrow zig-zag stitch along the inside and outside curves. 3. Use the tracing again to place flower pieces RR and R on to the fan block. Appliqué by hand or machine. For machine appliqué, place a piece of Stitch 'n Tear under the work and use a close satin stitch. 4. Make eight fan blocks. 5. Sew the fan blocks into pairs (Fig. 4). 6. Add decorative trim to the curved edges, extending the trim into the seam allowances of the blocks.

Bird



1. Copy the bird block from page 39 on to tracing paper. Place the tracing over a background square K, lining up outside edges. Hold it in place with one hand and slip the appliqué pieces for bird and foliage into place until they match the tracing. Note that the edge of the beak is placed under the body and the edge of the body is covered by the wing. Secure the pieces and stitch. (Use Stitch 'n Tear under the block for machine appliqué). 2. Make two birds facing one way and two reverse

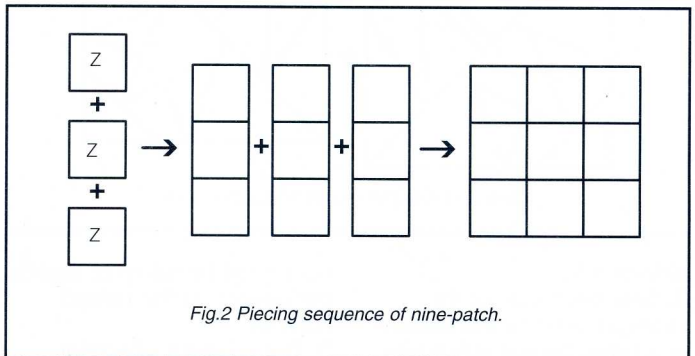


Fig.2 Piecing sequence of nine-patch.

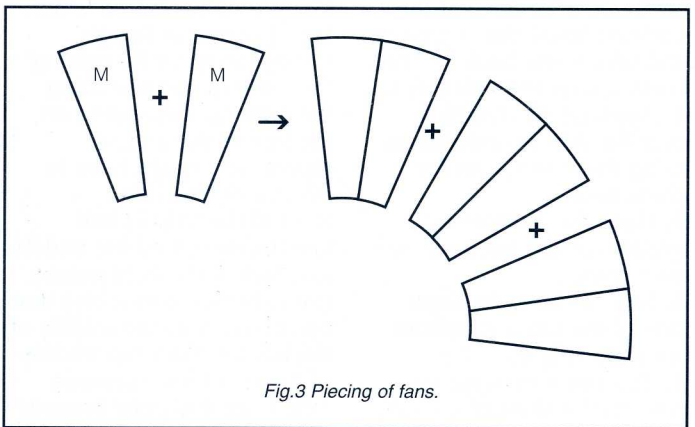


Fig.3 Piecing of fans.

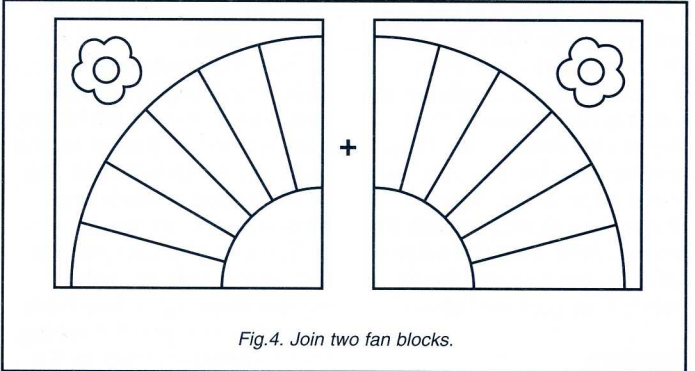


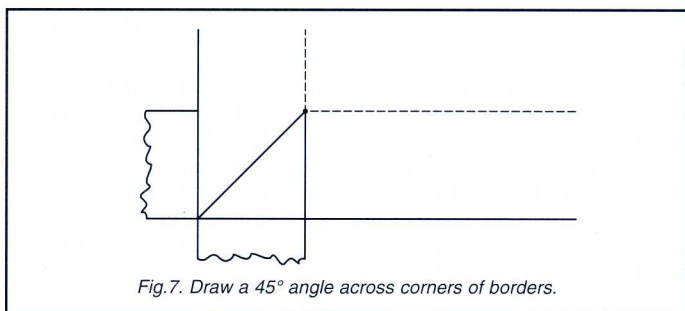
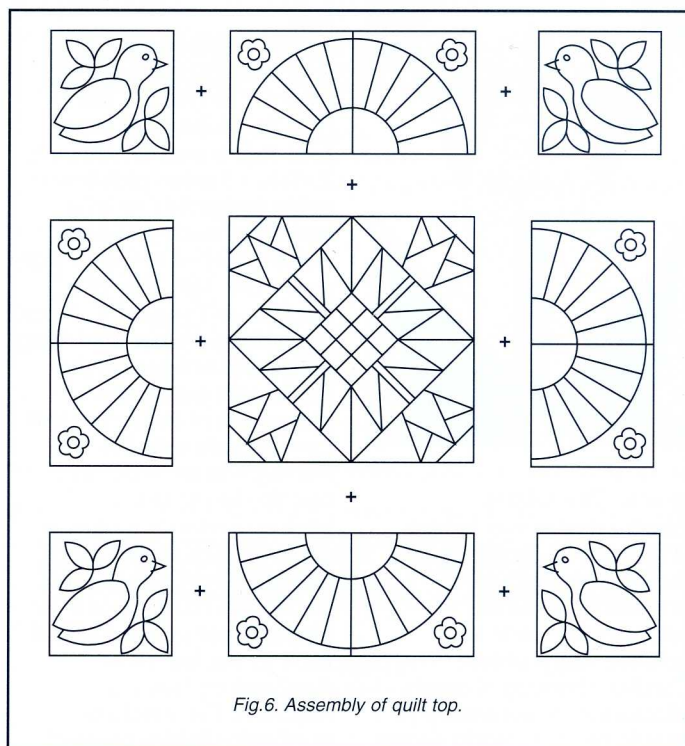
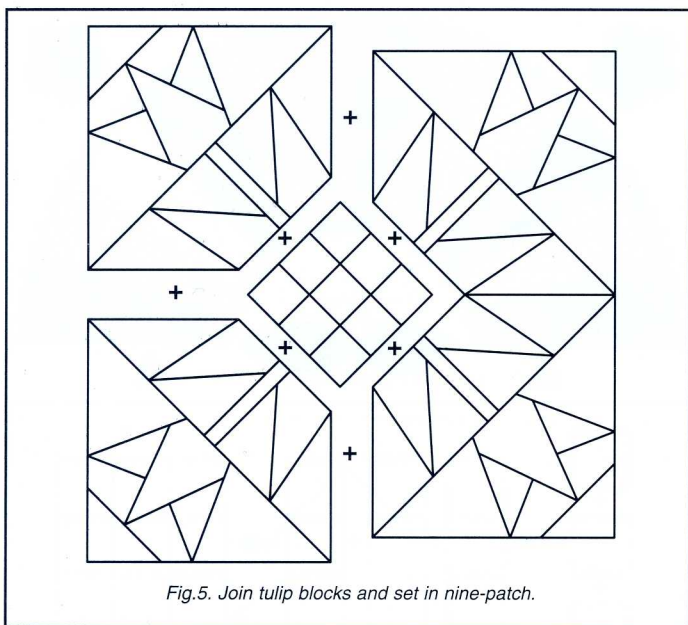
Fig.4. Join two fan blocks.

bird blocks. Reverse the tracing for appliqué placement on the reverse blocks.

Assembly

1. Lay out all the completed blocks to form the design. 2. Sew two tulips together by joining A and A reverse (Fig. 5) but do not sew into

the seam allowance at the bottom of the block. Stop stitching and take a few back stitches. Sew the remaining two tulips together in the same way and finally join all four tulips at the A and A reverse seams, taking care to leave lower seam allowances free so that you can set in the



nine-patch.

3. Sew each side of the nine-patch on to the bottom of a tulip. Do not stitch into the seam allowance at the corners; break the stitching and take a few back stitches. Press seams towards tulips.

4. Appliqué the hearts T over the A/A reverse seam, using the A template for placement.

5. Place this completed middle section back into the quilt layout.

6. Sew the birds to either side of the top and bottom fan units (Fig.6).

7. Sew the remaining fan units to the sides of the tulip unit and then sew the fan/bird units to the top and bottom of the tulip/fan unit. Press seams to one side.

8. Complete the appliqué by placing two leaves Y over the seam between the tulip and fan blocks, slipping the lower edge of the flower shape P or Q underneath the leaves. Note that the edge of QQ is placed under the Q patch (see picture below).

Borders

1. If using fabric with a regular repeat pattern, such as a check or floral border,



care must be taken to match the pattern at the mitred corners.

2. Cut a length of border fabric to the required width, but of generous length, enough to allow for mitring the corners and matching the pattern. Depending on the size of the pattern repeat, you might have to allow an extra 10in.

3. Fold the strip in half lengthwise to find the middle and look for a motif nearby (large flower, check etc) that can be used as the middle of the border. Mark the middle of the motif and measure 16in from this point towards each end of the strip. Mark these ends. Repeat for all border strips.

4. Sew the borders to the quilt, matching the centre and corner seamlines of the quilt top to the marks on the borders. Stitch between the marks made at each end, backstitching to secure.

5. To mitre the corners, on the wrong side of each border draw a 45° line from where you stopped stitching to the outside corner of the border strip (Fig.7). Pin and check and adjust the pattern to match if necessary. Stitch on this line. Trim seam and press open.

6. Press long border seams towards the border.

Quilting

1. Layer the backing, wadding and quilt top.
2. Quilt in the ditch around

the main shapes and along the border seam to stabilise the quilt. I quilted parallel lines inside the tulips and fans and in the body and wing of the bird, following the outlines of the shapes. I quilted in the ditch between the fan segments and added parallel lines inside the segments, using the edge of the presser foot as a guide. The entire background was then stipple-quilted (see below left). In the border I quilted parallel lines, following the lines of the fabric design.

leftover border fabric.
2. Sew the eyes on the birds and finish the quilt with a label (see mine below) and sleeve.

Binding and finishing

1. Bind the quilt using



INSTRUCTIONS
Full basic instructions for piecing, quilting and appliqué, by hand and machine, are given in the one-off publication *Basics of Patchwork, Quilting and Appliqué* – see page 57

