

**TIMELESS
TREASURES**

Easy Striped Table Runner
by Karen Montgomery
featuring Holiday Splendor



XMAS-CM9178 Ivory
shown 1/3 actual size

Materials

Note: Yardage depends on how long a table runner you want. Purchase your preferred length plus 9". The extra length will be trimmed to create the pointed ends of the runner.

Although not a problem in the featured fabric, some fabrics have a distinct design element on the main stripe or a scallop that will look better if balanced side to side. To balance the design, shift the length of the fabric so that one design element is directly on top of an identical element. The shifting of the fabrics will affect the final length of your runner so you will need to purchase extra fabric to allow you to balance the design.

XMAS-CM9178 Ivory

Backing fabric of your choice

Lightweight batting or flannel

Thread

8" Creative Grid 60° ruler

Basic sewing supplies

Rotary cutting supplies

Walking Foot for machine quilting

Instructions

1. Working with a single layer of fabric, cut two identical strips of fabric 8½" wide by the length of the fabric. The strips must have the exact same pattern repeat. (fig. 1 & 2)

2. Place the two identical strips side by side, reversing one strip so that it becomes a mirror image of the other. Mark the edges of the strips that you have selected to be the center of your runner with pins. (fig. 3)

3. Place the strips, right sides together, with center seams matching. (fig. 4) Replace the pins, marking the center seam.

4. Working on one end of the fabric strip, place the triangle ruler with the base of the triangle along the outside edge of the fabric strip. Trim on both sides of the ruler, cutting a pair of equilateral triangles. These triangles will be used in your table runner. (fig. 5 & 6)

Reverse the ruler so that the tip of the triangle is aligned with the outside edge and the base of the triangle is aligned with the center seam. Trim

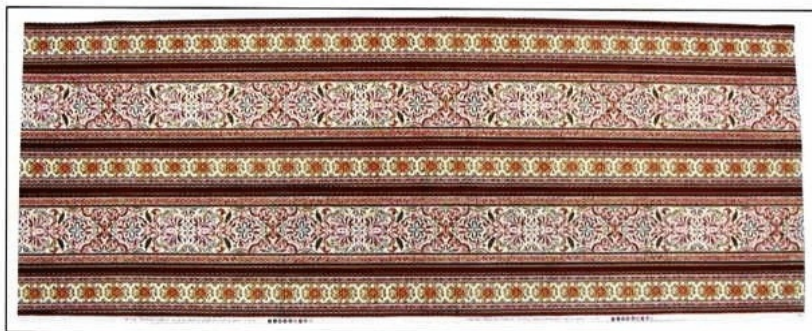


fig. 1

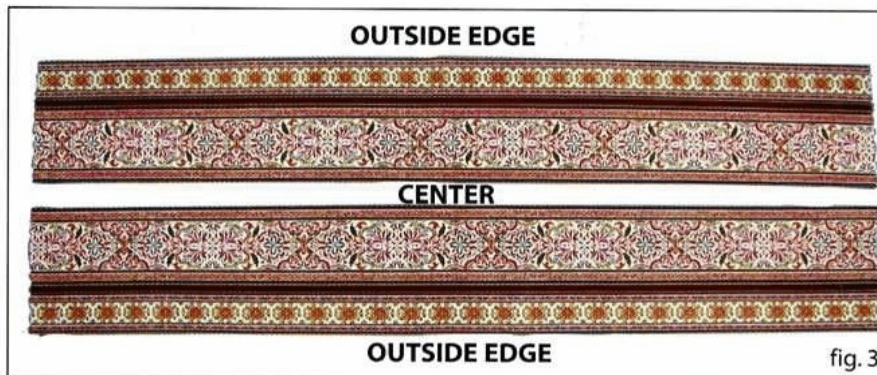


fig. 3

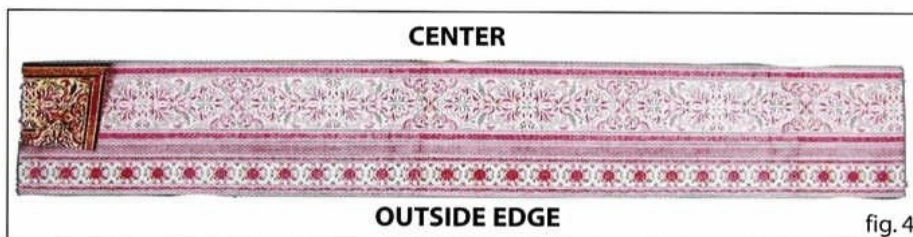


fig. 4

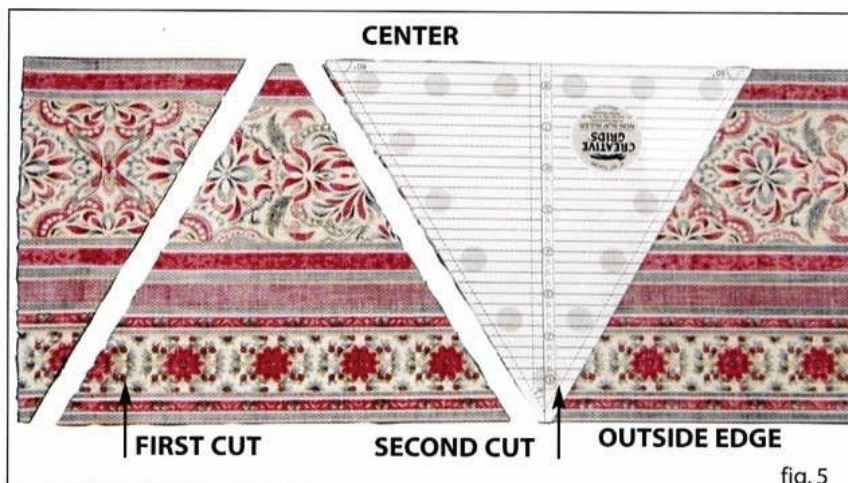


fig. 5

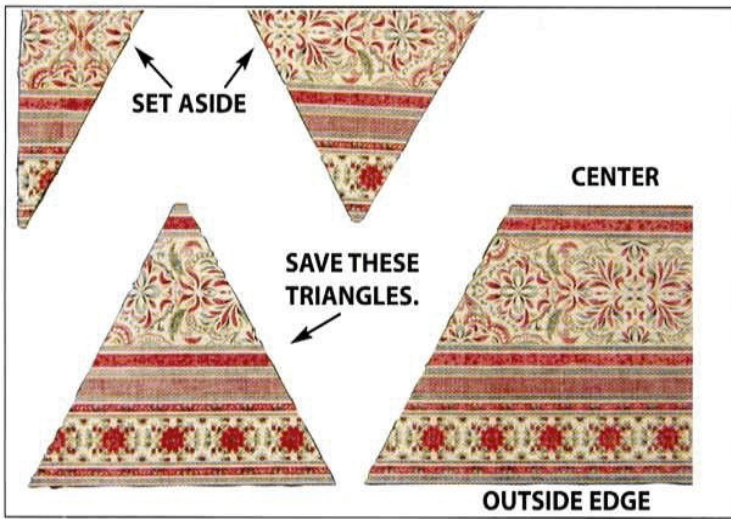


fig. 6

the second triangle. These triangles will NOT be used in this project, set them off to the side. (fig. 5 & 6)

Repeat this process on the opposite end of the fabric strips. Take care to make your first cut in the proper direction.

5. Place the triangles on both ends of the center strips, with right sides together. Carefully pin the pieces, matching the stripes and design elements. Stitch all four triangles in place. *These are bias edges so take care not to stretch the seams when stitching or pressing.* Press the seams on one side of the table runner toward the center unit and press the seams on the other side toward the triangles. (fig. 7 & 8)

After stitching the triangles in place you should have a perfectly straight edge on what will be the center seam of your table runner.

(fig. 9) If your triangles were slightly offset when matching your designs, make the adjustments at this time by trimming where necessary.

6. Place the units right sides together, matching the triangle seams and design elements. Pin in place and stitch center seam. Press. (fig. 9)

7. Layer the backing fabric with the batting/flannel. Place the batting/flannel on the bottom and the backing fabric on top with the right side facing up. Place the completed top on the backing fabric with the right sides together. Using rotary supplies, trim the batting/flannel and backing fabric even with the outside edge of the top. Pin the layers together.

8. Using a walking foot, stitch completely around the outside edge of the runner, leaving a 6" opening on one of the long sides for turning. Clip the corners and turn right side out. Slip stitch the opening. Press and pin the layers together.

9. Using the printed fabric design as your guide, machine quilt through all layers.

Enjoy!



fig. 7

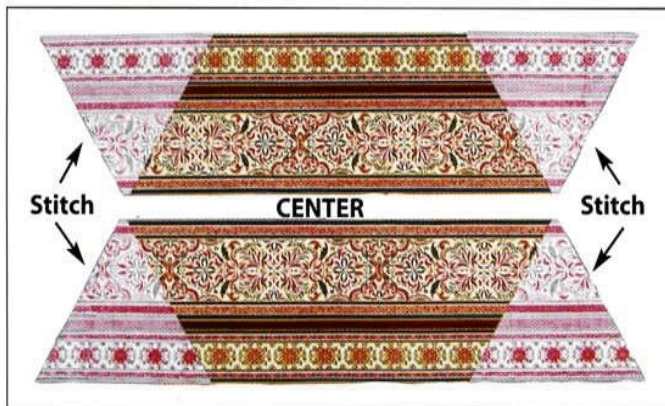


fig. 8



fig. 9

©2006 Timeless Treasures

Permission is granted to shop owners and teachers to make copies for promotional or educational purposes only.

This pattern may not be reproduced for commercial purposes.



This is a longer version of the same table runner in which the center and outside edges have been reversed from the configuration shown in the instructions.

The Black colorway of this stripe will also make a beautiful table runner.



XMAS-CM9178 Ivory
shown 1/3 actual size

Timeless Treasures
483-485 Broadway, New York, NY 10013
Phone: 212-226-1400 • Fax: 212-925-4180
www.ttfabrics.com