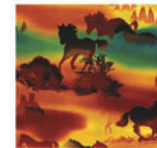


# AMERICAN HERITAGE

QUILT DESIGNED BY: SANDIE MCCANN  
 QUILTED BY: PHYLLIS REDDISH



ETJ-6337-207  
 SUNSET



ETJ-6389-2  
 BLACK



ETJ-6343-16  
 BROWN



ETJ-6343-91  
 CRIMSON



ETJ-6338-3  
 RED



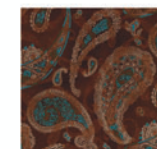
ETJ-6340-81  
 TURQUOISE



ETJ-6386-14  
 NATURAL



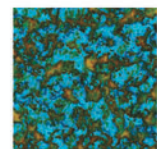
ETJ-6386-3  
 RED



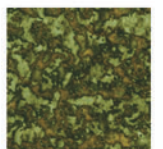
ETJ-6256-16  
 BROWN



ETJ-6341-3  
 RED



ETJ-6342-81  
 TURQUOISE



ETJ-6342-51  
 JADE

for more quilt patterns visit our website

**ROBERT KAUFMAN**

F A B R I C S

www.robertkaufman.com

\*MARBLEOUS  
 COLLECTION

\*\*KONA  
 COTTON



\*DRJ-6110-14  
 NATURAL



\*\*K001-1019-  
 BLACK



ETJ-6253-3  
 RED

# American Heritage Collection

Designed by Sandie McCann Quilted by Phyllis Reddish

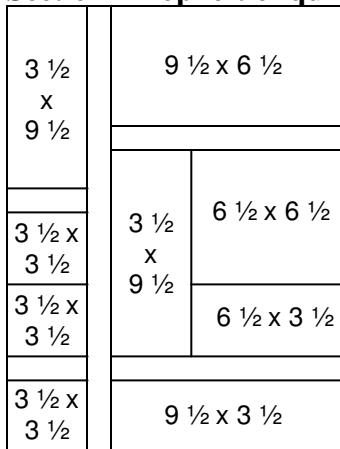
All strips are cut on the crosswise grain of fabric (width of fabric), unless stated otherwise. All strips are based on 42" length. Carefully trim off all selvages. All seams are 1/4". A generous amount of fabric is given to achieve a scrap effect. **Please read the pattern carefully before you begin.**

## Fabric Requirements and Cutting Directions

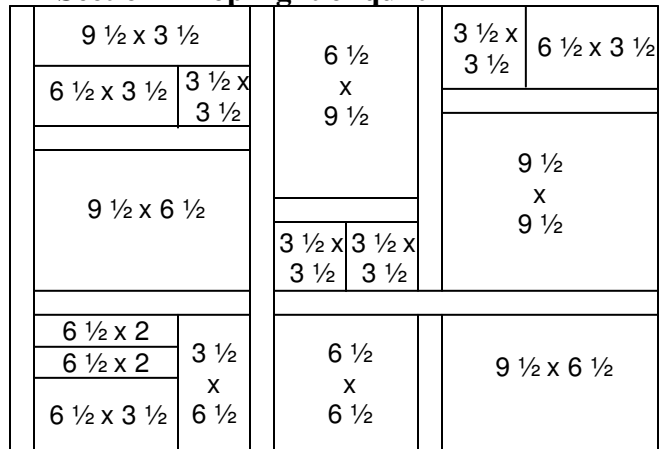
Fabrics	Amount.	Cutting Directions
ETJ 6337-207	1/4 yd	Cut two 3.5" x 3.5" squares, two 3.5" x 6.5" rectangles, one 6.5" x 9.5" rectangle.
ETJ 6386-3	1/4 yd	Cut two 6.5" x 6.5" squares, cut one 3.5" x 3.5"
ETJ 6256-16	1/4 yd	Cut one 3.5" x 9.5" rectangle, cut one 6.5" x 2" rectangle, Cut one 3.5" x 6.5" rectangle, cut one 3.5" x 3.5" square.
ETJ 6389-2	1/4 yd	Cut one square 3.5 "x 3.5", one 6.5" x 6.5", cut one rectangle 3.5" x 9.5", one 3.5" x 6.5"
ETJ 6342-81	1/4 yd	Cut one square 6.5"x 6.5", one 3.5"x 3.5", cut two rectangles 3.5"x 6.5", and one 6.5"x 2"
ETJ 6253-3	1/8 yd	Cut two 3.5"x 3.5" squares
ETJ 6341-3	1/8 yd	Cut two 3.5"x 3.5" squares, cut one 3.5"x 6.5" rectangle
ETJ 6342-51	1/8 yd	Cut two 3.5"x 3.5" squares, cut one 3.5"x 6.5" rectangle
ETJ 6338-3	1/4 yd	Cut one square 3.5"x 3.5", one 6.5"x 6.5", cut one rectangle 3.5"x 6.5"
ETJ 6340-81	1/4 yd	Cut two squares 3.5"x 3.5", one 6.5"x 6.5", cut one rectangle 3.5"x 6.5"
EUJ 6343-91	1/4 yd	Cut one rectangle 6.5"x 9.5", one 6.5"x 3.5", one 3.5"x 9.5" one square 3.5"x 3.5"
EUJ 6343-16	1/4 yd	Cut one rectangle 6.5"x 9.5", one 3.5"x 6.5", cut two squares 3.5"x 3.5"
ETJ 6389-2	1/4 yd	Cut two squares 3.5"x 3.5", one 6.5"x 6.5"
ETJ 6386-14	1/3 yd	Cut two vertical rectangles 3.5"x 9.5", two horizontal rectangles 3.5"x 9.5", cut three 9.5"x 9.5" squares
K001-1019	1- 1/2 yd	Cut 15 strips 1.5" x width of the fabric for sashing. Cut six strips 4.5" x width of the fabric for borders, cut six strips 2.25" x width of fabric for binding.
DRJ 6110-14	3/4 yd	Cut five rectangles 6.5"x 9.5", three 3.5"x 6.5", three 3.5"x 9.5" cut two squares 3.5"x 3.5". two 9.5"x 9.5". two 6.5"x 6.5"

### Block Construction:

#### Section 1 Top left of quilt



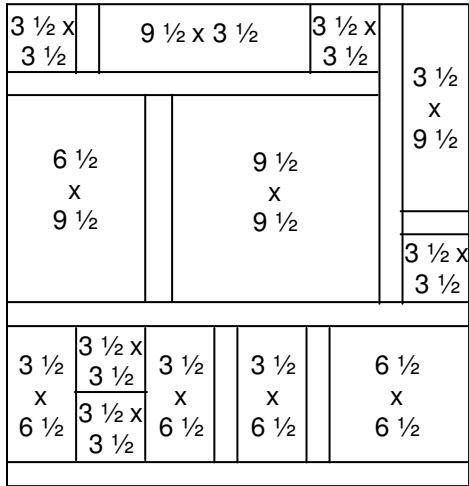
#### Section 2 Top right of quilt



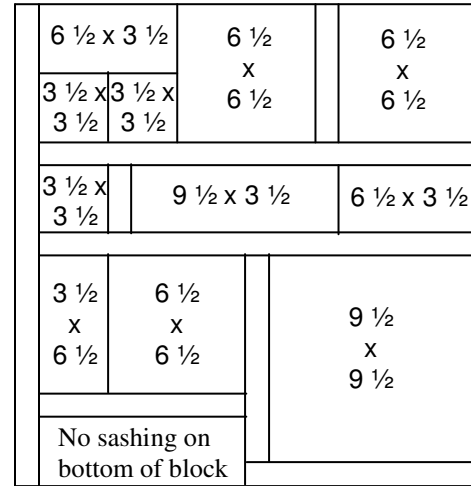
**American Heritage Collection**  
 Designed by Sandie McCann Quilted by Phyllis Reddish

After sewing the two top pieces together, add sashing across the bottom.

**Section 3 Middle left of quilt**

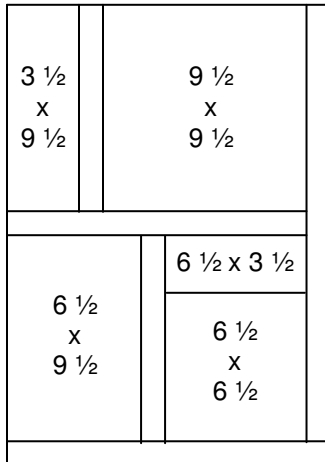


**Section 4 Middle right of quilt**

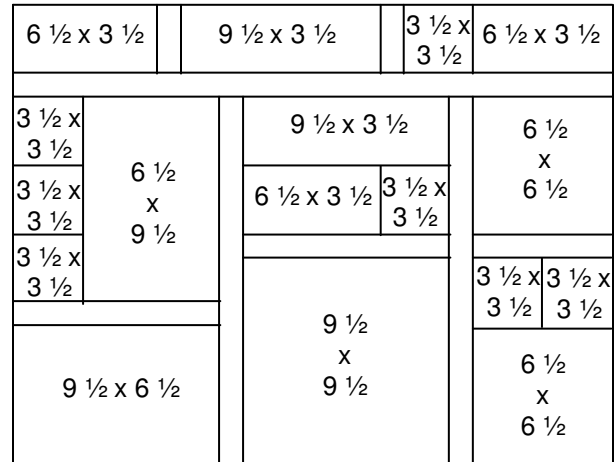


Join middle two sections of quilt together. Please note there is no sashing on the bottom of the block indicated. This block when joined to the bottom right of quilt will appear as one large block. Join section 1,2 to section 3,4.

**Section 5 Bottom left of quilt**



**Section 6 Bottom right of quilt**



Once section 5 is joined to section 6, attach to the bottom of section 3,4. Please note sashing on the bottom of section 5, and not on section 6.