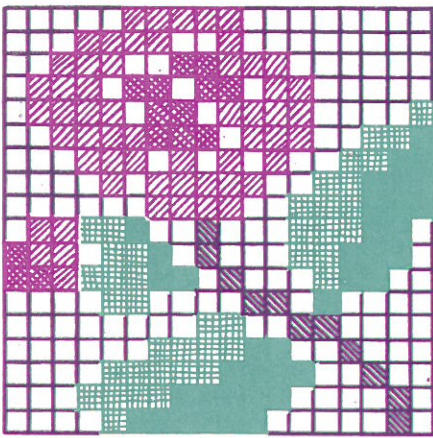
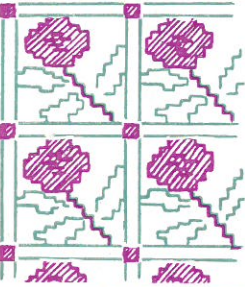


OLD FASHIONED ROSE






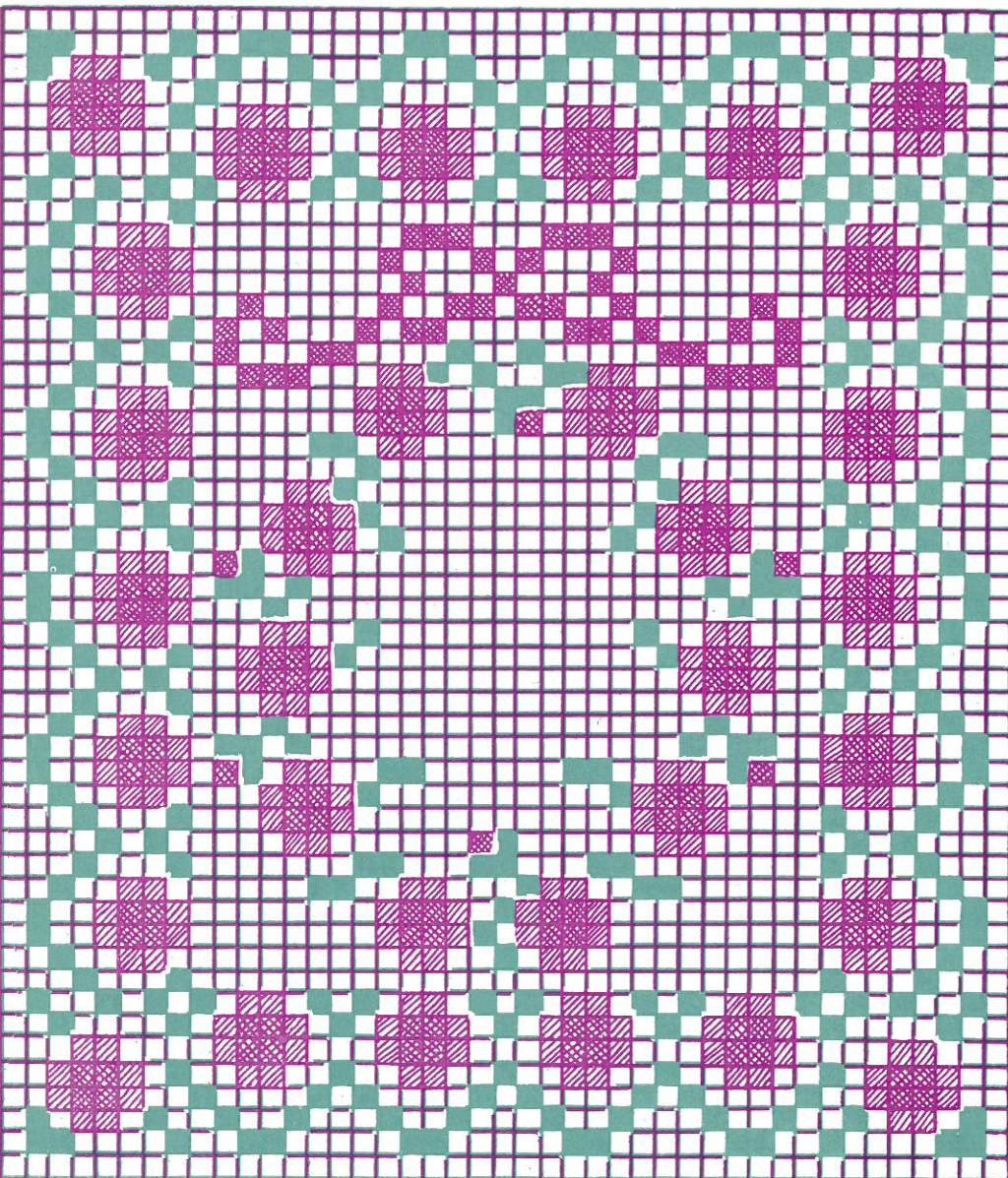
1" square
to make
quilt
at left.

2" square for
making quilt
below.



COLOR GUIDE

-  =Dark Green
-  =Light Green
-  =Brown
-  =Pink
-  =Rose



This is the single pieced block shown in upper left-hand corner. Below this is sketch illustrating the method of setting blocks together, also an explanation of the colors indicated on both quilts.

In making this quilt use the 1" square. Seam allowance is indicated all around. The large pieced blocks are 18" square; 20 of the blocks are needed--4 for width and 5 for length of quilt. These are set together with 2" strips of white (cut strips $2\frac{1}{2}$ " wide to allow for seams). 2" squares of rose or green may be used at corners of blocks where the strips meet (cut these squares $2\frac{1}{2}$ " to allow for seams). Repeat with strips and square around outside of quilt to make border. Finished quilt measures about 82"x102".

For each 18" block, cut: 163 white squares, 38 dark green, 41 light green, 11 brown, 14 rose, 57 pink. Follow the chart carefully in placing colors. Cut 49 white strips $2\frac{1}{2}$ "x $18\frac{1}{2}$ " and 30 rose or green $2\frac{1}{2}$ " squares to use in setting the pieced blocks together.

Material requirements: about $1\frac{1}{2}$ yds dark green, $1\frac{3}{4}$ light green, $\frac{1}{3}$ brown, $\frac{3}{4}$ rose, $2\frac{1}{4}$ pink and 7 yds white for squares and strips. An additional $\frac{1}{4}$ yd of color will be needed for $2\frac{1}{2}$ " squares used in setting. Quilt along seams for the prettiest effect.

ROSY WREATH QUILT

The complete quilt is shown at left and is pieced entirely of 2" squares. Cut squares by the larger pattern given above--this allows for a seam all around.

The simplest method is to divide the chart into strips which may be placed separately and then joined. Finished quilt measures about 86"x100".

The 1435 white squares require about $7\frac{1}{3}$ yds material. 282 dk green squares require about $1\frac{1}{2}$ yds material. 256 pink squares require about $1\frac{1}{3}$ yds. 177 rose squares require about 1 yd.

Straight quilting may follow each side of seams. If closer quilting is desired, quilt through center of 2" blocks in each direction. Or diagonal cross quilting may be used.