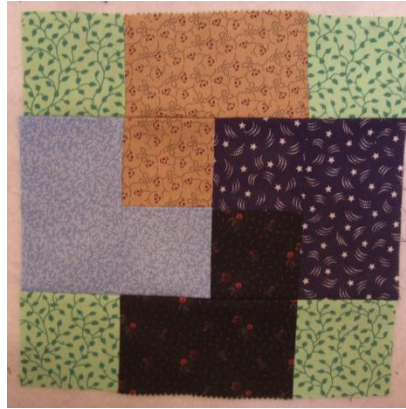


Tutorial: How to Turn a Square On Point

This is an easy method to turn a square on point if you decide that is what you need after you've made a square, or if you don't have a pattern but want something on point. This works best if your background fabric is a solid or a non-directional.

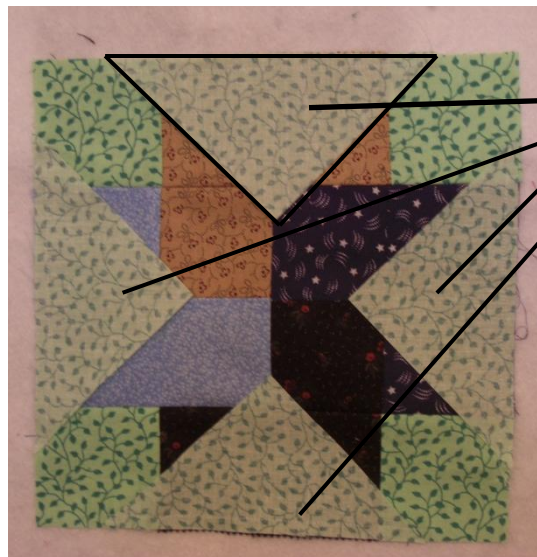
1. This is the square I started with. I liked the background fabric, and wanted to see a bit more of it in the quilt, and putting this square on point would help it look like a more traditional card trick block!



2. Start with a square that will be cut into 4 triangles. The outer dimension of the square is one half of the square you want to put on point, plus 1.5". My final square was 9" (8.5" finished), so I started with a 6" square and cut it into 4 triangles.

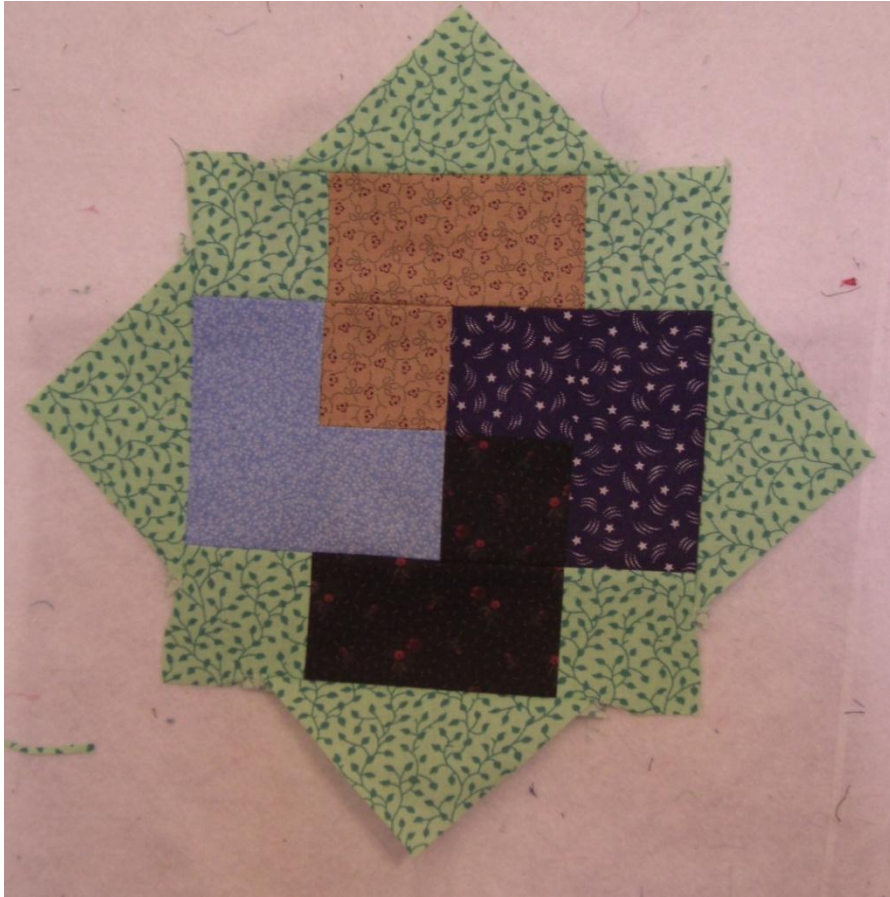


3. Sew the triangles to your square, right sides together, centering the long side of the triangle on your square. Sew one triangle per side.

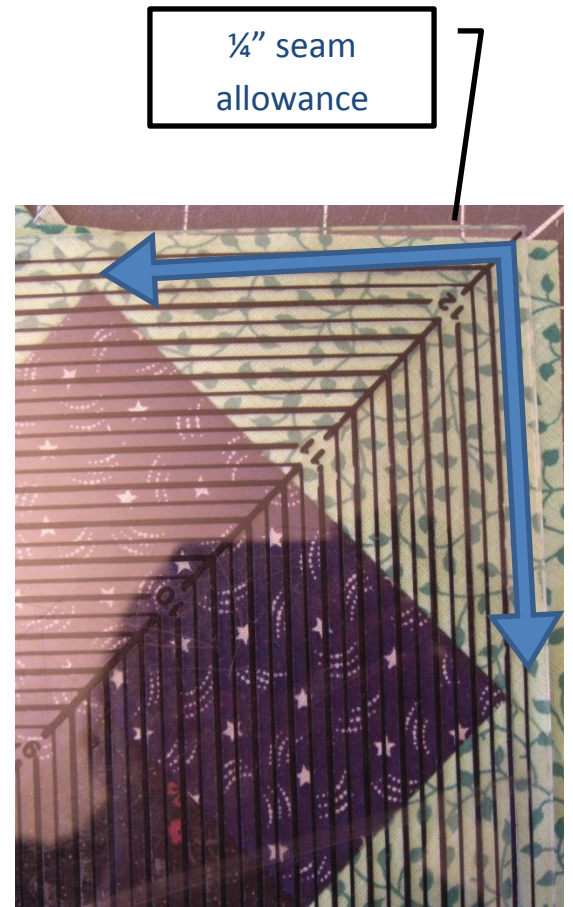
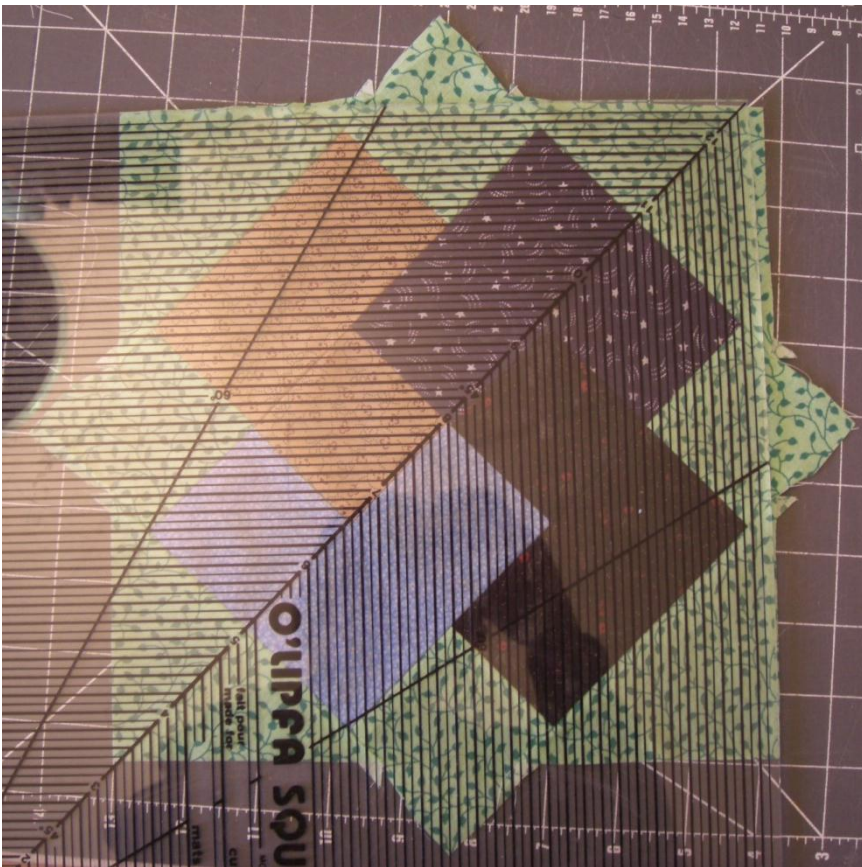


Placement of triangles on original square

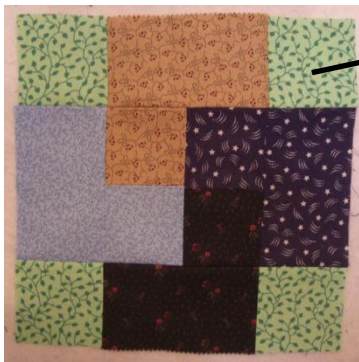
4. Press the seam allowances toward the triangles you just added.



5. Next trim the square, being sure to keep the $\frac{1}{4}$ inch seam allowances as you trim the square in its new dimension. Be sure to center your pattern in the new orientation.



6. And so your square is on point! Be aware that using this method puts the bias on the corners of the square, so use care when handling. Starch may be needed if fabric is especially stretchy!



Original Square

Original Square Completed
On Point!



Scraps leftover from
final trim

