

## Optical Illusion Quilt

Yardage 2.25 yards (44-45" wide) each of two colors

Finished size 63 x 63 (does not include borders).

All seams should be sewn with a .25 (1/4 inch) seam.

Use highly contrasting fabrics for best effect.

Cut the following strips: (in inches)

### Black Fabric

√	Label	Number to Cut	Width	Length
	Ba	4	1.5	39
	Bb	4	2.5	39
	Bc	4	3.5	39
	Bd	2	4.5	39
	Be	4	2	37
	Bf	4	3	37
	Bg	4	4	37
	Bh	1	1.5	37

### White Fabric

√	Label	Number to Cut	Width	Length
	Wa	4	2	39
	Wb	4	3	39
	Wc	4	4	39
	Wd	1	1.5	39
	We	4	1.5	37
	Wf	4	2.5	37
	Wg	4	3.5	37
	Wh	2	4.5	37

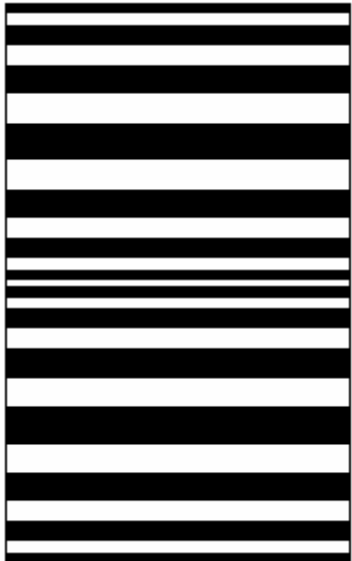
As you cut, it might be a good idea to label each stack with its "label ID" so you can keep track of them in the next step.

Optical Illusion Quilt

Sew the following strips together along their length.

This will be set 1

- Ba
- Wa
- Bb
- Wb
- Bc
- Wc
- Bd
- Wc
- Bc
- Wb
- Bb
- Wa
- Ba
- Wd
- Ba
- Wa
- Bb
- Wb
- Bc
- Wc
- Bd
- Wc
- Bc
- Wb
- Bb
- Wa
- Ba

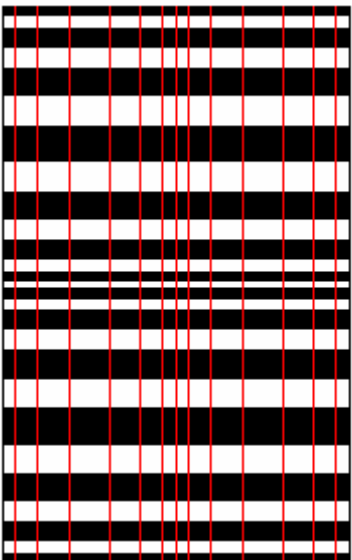


Cut the resulting fabric vertically into strips with the following widths: (in inches)

The red lines in the picture are cut lines.

Keep the strips in order as you cut them or label them.

- 1.5
- 2.5
- 3.5
- 4.5
- 3.5
- 2.5
- 1.5
- 1.5
- 2.5
- 3.5
- 4.5
- 3.5
- 2.5
- 1.5

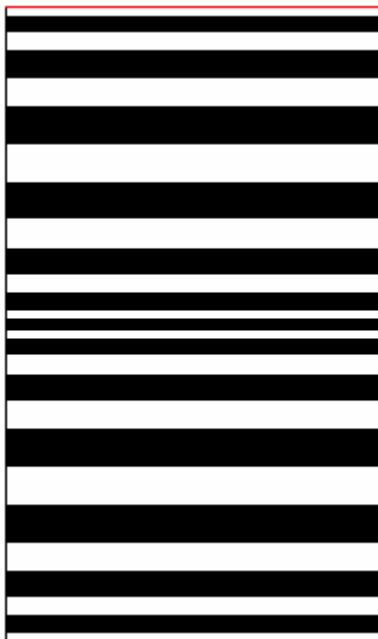


## Optical Illusion Quilt

In a second set, sew the following together along their length

This will be Set 2

We  
Be  
Wf  
Bf  
Wg  
Bg  
Wh  
Bg  
Wg  
Bf  
Wf  
Be  
We  
Bh  
We  
Be  
Wf  
Bf  
Wg  
Bg  
Wh  
Bg  
Wg  
Bf  
Wf  
Be  
We



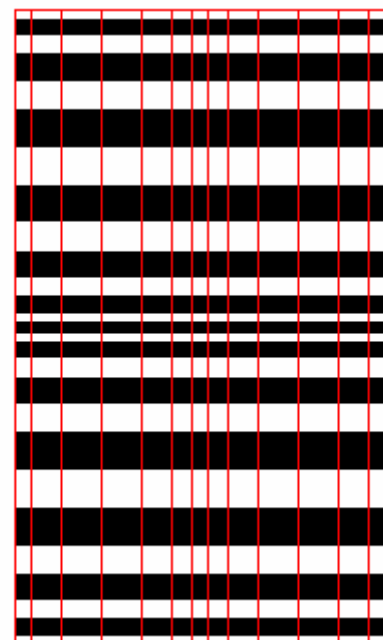
Cut the strips vertically into strips with the following widths (in inches)

Cut on the red lines

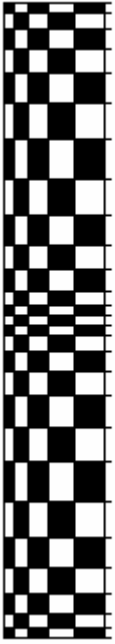
Keep the strips in order as you cut them  
or label them.

2  
3  
4  
4  
3  
2  
1.5  
2  
3  
4  
4  
3  
2

**\*\*Make sure you keep the strips in order!\*\***



Start with the left-most strip from set 1 and alternate: set 1 set 2 set 1 set 2 etc.



Continue in this manner until you have used all your strips, and if I've written this up correctly, you should have something that looks like this!

