

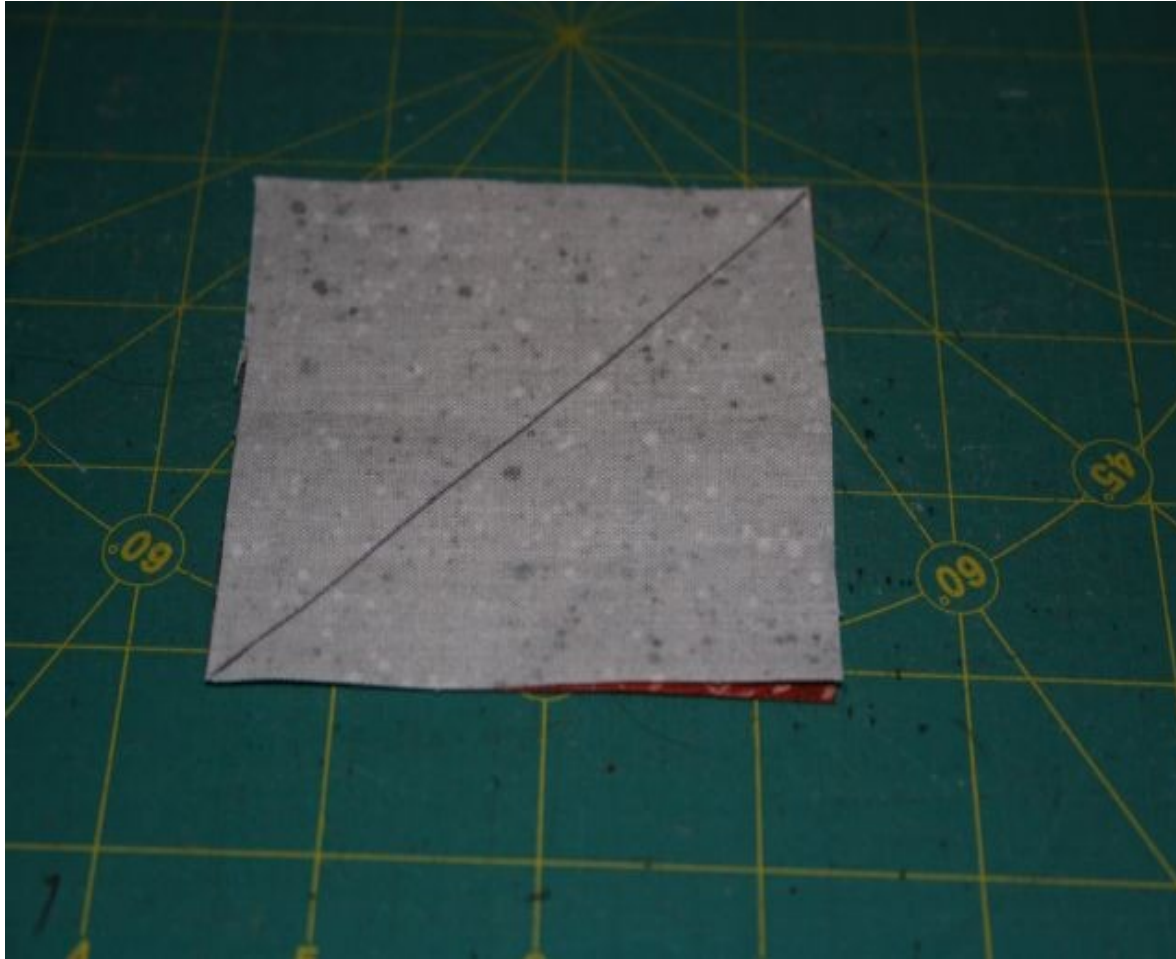
# Clue #2

## Supplies:

King Size	84-3" Square of Color 2 84-3" Square of Background
Queen Size	63-3" Square of Color 2 63-3" Square of Background
Twin/Full	45-3" Square of Color 2 45-3" Square of Background
Crib Size	30-3" Square of Color 2 30-3" Square of Background
Wall Hanging	3-3" Square of Color 2 3-3" Square of Background



# Step 1



Draw a diagonal line  
on the 3"  
Background square.

# Step 2

Layout squares like this for easy piecing. Bring them right next to your sewing machine.



# Step 3



Sew  $\frac{1}{4}$ " away from  
the drawn line.  
Sew down the right  
side first.

# Step 4



When you reach the end of your stack and have sewn all of them. Take the last one and turn it around. Sew back down the other side.

# Step 5



Continue sewing until you come back to the first square that you started out with. Both sides of the square will be sewn on with a  $\frac{1}{4}$ " seam allowance.

# Step 6



Lay out the linked squares on your cutting mat.

# Step 7

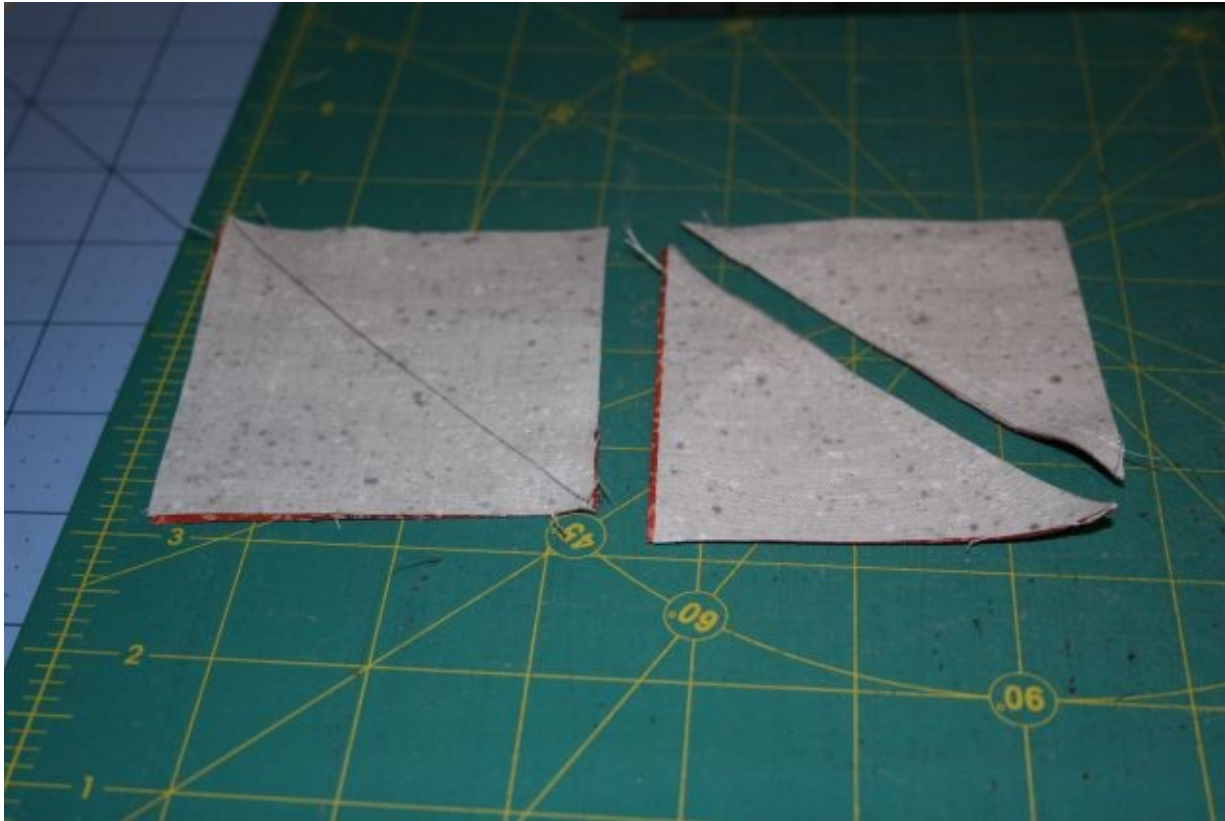
Cut the squares from the linking threads. Be careful not to cut the squares.



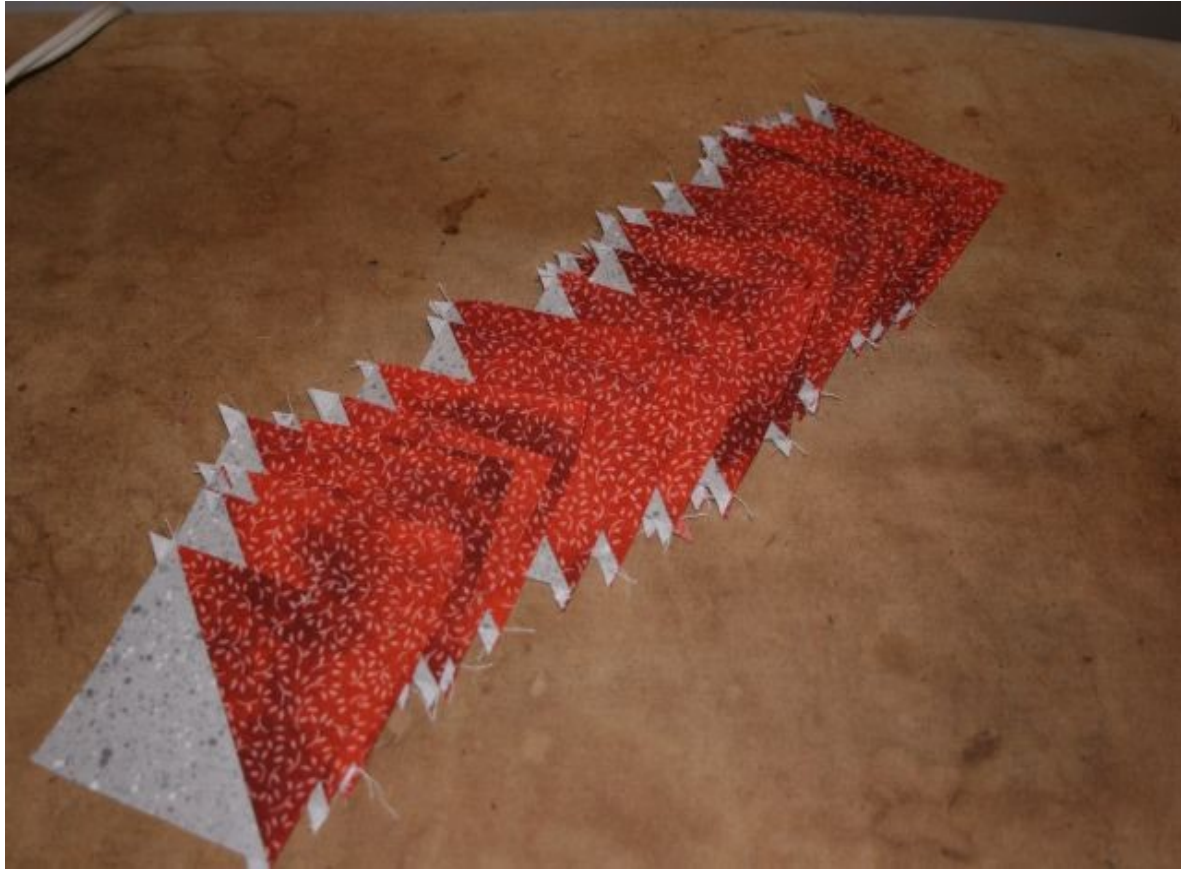


# Step 8

Cut ON the line so that now there is 2 Half square triangles.



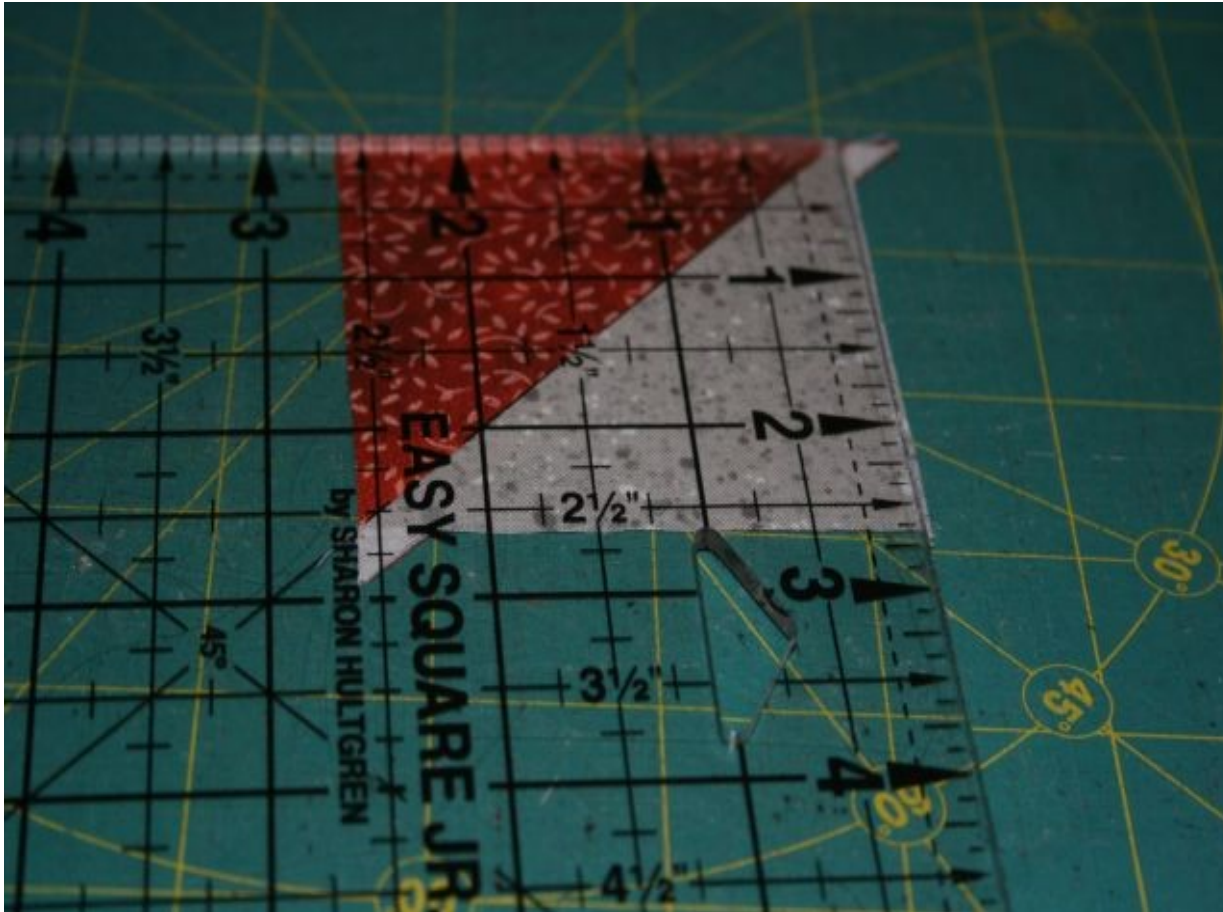
# Step 9



Iron  $\frac{2}{3}$  your squares to the background and  $\frac{1}{3}$  of your squares to the Color 2. So for instance if I have 80 squares I'll iron 40 to the background and 20 to Color 2.

# Step 10

Trim your squares to  
2 1/2".



# Clue 2a

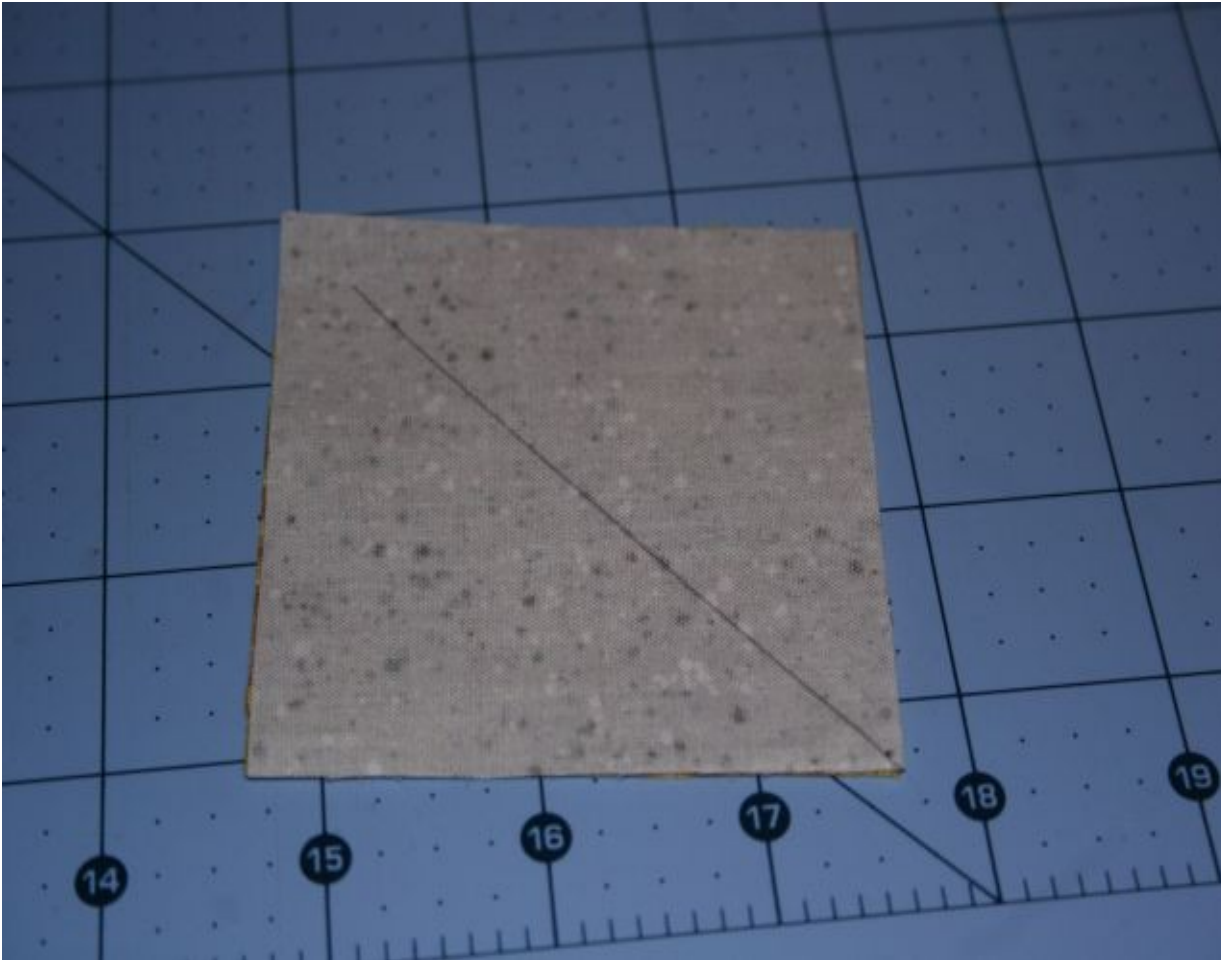


## Supplies:

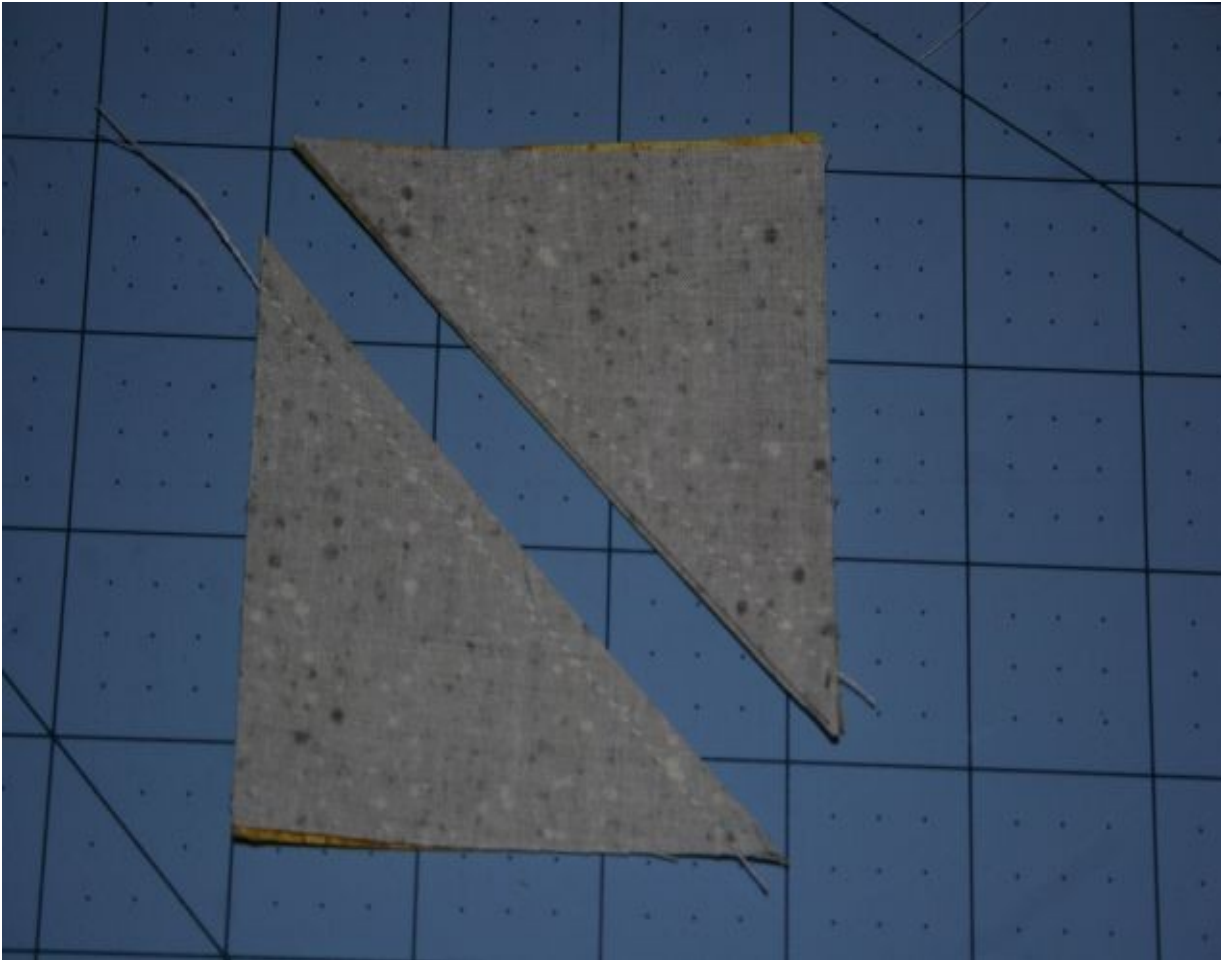
King Size	28-3" Square of main accent 28-3" Square of Background
Queen Size	21-3" Square of main accent 21-3" Square of Background
Twin/Full	15-3" Square of main accent 15-3" Square of Background
Crib Size	10-3" Square of main accent 10-3" Square of Background
Wall Hanging	1-3" Square of main accent 1-3" Square of Color Background

# Step 1 (Clue 2a)

Draw a line diagonal on the background. Line them up like earlier for Step 2.



## Step 2 (Clue 2a)



Cut these squares in half like Step 8 and trim them up like Step 10. Iron them to the accent side.

## Step 3 (Clue 2a)



This is the layout that we are going to sew. Going from the top left, Press seam to Color 2. Top right has already been pressed to the accent.

Bottom row press seam (from the left bottom Half square) to the Color 2 (the right bottom Half square) to the background.

## Step 4 (Clue 2a)



Start with the bottom row. Make sure that the seams are opposite each other. Line it up to the machine like this so that you don't fight the bulk of the seams.

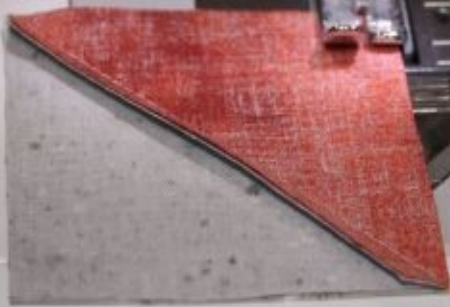


# Step 5 (Clue 2a)



This is what it will look like laid out. Next step will include the top row.

## Step 6 (Clue 2a)



Lay it out on the machine with the accent on the bottom and the Color 2 on top. Again, line it up so that you are not fighting the bulk of the fabric.

# Step 7 (Clue 2a)

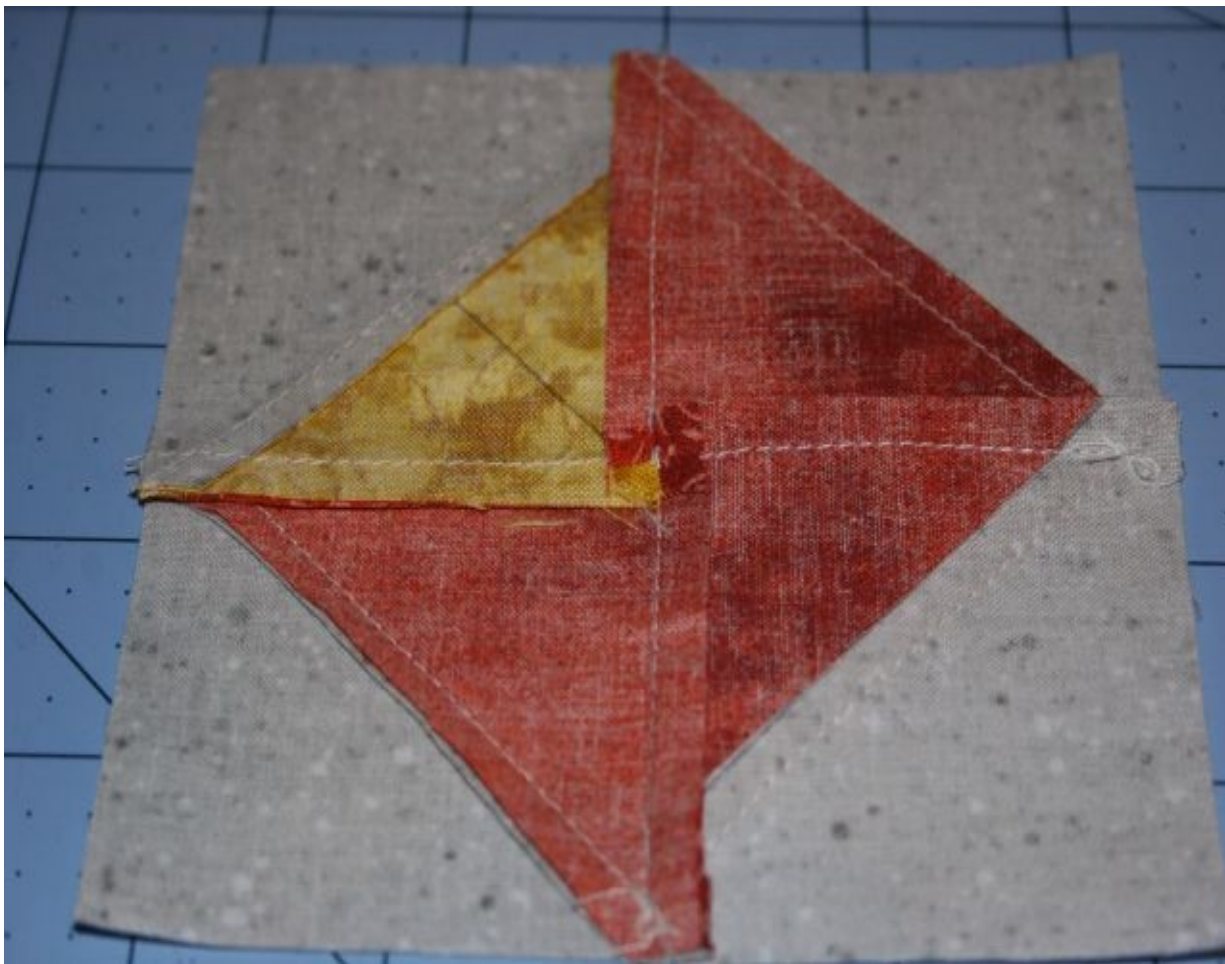


Sew the top row in the same fashion. Line it up so that seams are opposite of each other on both ends.

Sew top and bottom rows together. Interlock seams. If you need to, pin in the center so that it matches.

## Step 8 (Clue 2a)

Turn block over and push seams opposite. This will make a baby four patch. It will make the center less bulky and it will lay flat. This is the end of Clue 2! The next page will have how many for each size you should have.



King Size 56 units

Queen Size 42 units

Full/Twin 30 units

Crib Size 20 units

Wall Hanging 2 units