

Tutorial for Quilted Recliner Slipcover

Posted January 10, 2012 on QB by AnitaSt in Tutorials Section

After my recent post [Quilted Recliner Slipcover-thing](#) several of you asked for a tutorial, so here goes my first tute on QB. Feel free to post questions or PM me. I included lots of pictures. The link above is to the first cover I made. Figure 1 shows the finished project that you'll see in this tutorial.



Figure 1.

I know this looks like a long project with lots of steps, but the chair cover is just a long rectangle with two short side panels. And the arm panels are also just rectangles with short front panels. After you read through to the end, you'll see that the steps are actually easy.

Materials

Fabric for front and backing. I used 2.5 yards of quilting cotton of *each*, based on the size of my recliner. Your yardage requirements will vary depending on the measurements of your chair.

Fabric for binding. The amount will depend on the measurements of your recliner. I needed less than 1 yard for my binding.

Batting of your choice. I used cotton batting because we live in a hot climate.

Measurements for the Rectangle

You'll need to make a couple of decisions and take some measurements.

1. First, decide how far down the outside back of the chair you want the cover to hang. On mine, the drop is about 11 inches.
2. Drape your tape measure from that drop point up and over the back of the chair, down to the seat, and across the seat to the front edge of the seat or wherever you want the cover to end. My measurement was 72 inches. Figure 2.



3. Add 4 to 6 inches to the length you determined in steps 1 and 2. (Be sure your total includes the drop over the outside back.) The extra inches are for “tuck in” at the back of the seat and to allow the cover to expand when the chair is reclined.

4. Measure the width of the back at its widest point. This will be the width of your rectangle. Be sure there is a little ease (add about 1 ½ inches to the width measurement) so you can get the cover on and off easily and so it can shift around a little bit when someone moves around in the chair. Figure 3.



So now you have the measurements for your rectangle. Mine turned out to be 27" by 76".

Measurements for the Side Panels

5. The side panel length (top to bottom) will be the same as the drop you determined in Step 1. Mine is about 11 inches. I suggest that you keep this length as short as possible. You want the cover to stay on the chair, but the longer the side panels are, the more stress will be put on the seams when the chair is reclined. (I think of these side panels as being like cap sleeves on a blouse instead of a sleeve that comes to the elbow.) Figure 4.



Figure 4.

6. Measure across the side of the chair back to determine how wide the side panels need to be. Be generous with this measurement or add 1 to 2 inches so that the cover can go on easily and move around a little. For this project, my measurement is 9 inches. Figure 5.



Figure 5.

Measurements for Arm Covers

The arm covers are constructed the same way....they are a rectangle with a little front panel. You need three measurements:

7. The length of the arm. On my chair the length was 21 inches. Figure 6.



8. The width of the arm cover. Drape your tape measure over the arm and decide how much drop you want on the inside and the outside. Mine are pretty narrow because I was short on fabric...next time I'll make them a little wider. Figure 7.



9. The length of the little front panel. This will depend on the shape of the arm on your chair. Measure to the point you want the cover to end. For safety, cut this piece at least a couple of inches longer than your measurement. Figure 8 shows what can happen if you don't....my panel was a little too short and I had to trim the rectangle.



Pinning and Fitting

This part is the same as making a custom slipcover by draping and cutting the fabric on the chair.

10. Drape the cover rectangle on the chair with the back edge at the point you determined in Step 1. You can place your quilted fabric right side up or right side down. Figure 9.



11. With right sides together, pin the side panel rectangle to the edges of the cover rectangle. In Figure 10, the squiggly line shows where it is pinned to the edge of the rectangle. Then trim the excess so that the side panel now curves to match the draped cover rectangle. Figure 11.



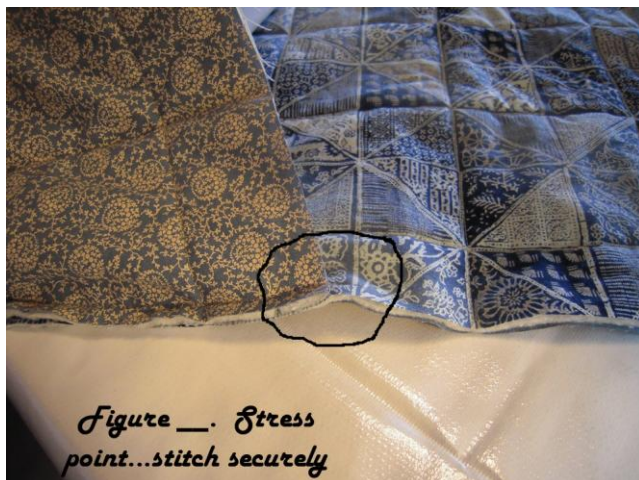
12. Do the same thing for the opposite side panel.

14. The arm covers are pinned and fitted the same way. Drape the arm cover over the arm, pin the front panel to the arm cover then trim to create the curve. Figure 12.



Assembling

13. Stitch side panels to the rectangle. I used a ½ inch seam. Be sure to secure the stitching well at the point where the side panel meets the front part of the chair cover. This point takes a lot of stress when the chair is reclined. In Figure 13.



Note: I see that I forgot to put the Figure number into the picture...it's Figure 13.

14. I zig-zagged the seam allowances to prevent raveling. You could serge them or even cover them with binding. Using the binding would make the cover reversible.

15. The arm covers are assembled the same way as the chair cover.

Binding

Use your preferred method of binding for the chair cover and the arm covers.

The only unusual part of the binding is the inside corner created where the side panel meets the chair cover rectangle. I followed the method described by Bonnie Hunter at [this link](#).....scroll down to the end of the page. There are other methods but they tell you to clip the seam at the intersection. Because this point gets a lot of stress and pulling, I didn't want to risk clipping the seam. Bias binding makes it MUCH easier to turn the inside corner, but it can be done with straight-grain binding also.

That's it....you're ready for the inspector! Post questions or PM me. Thanks for liking my project!

Anita