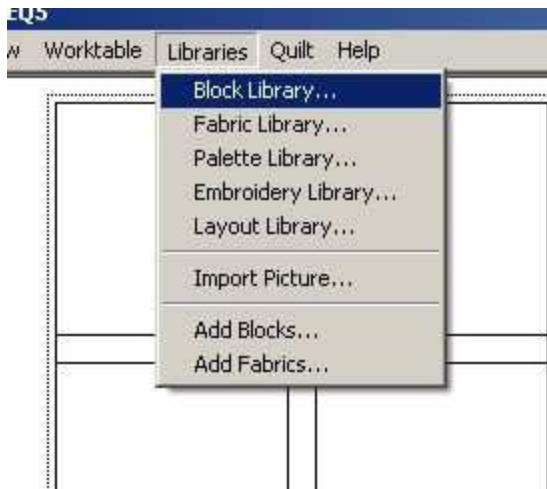
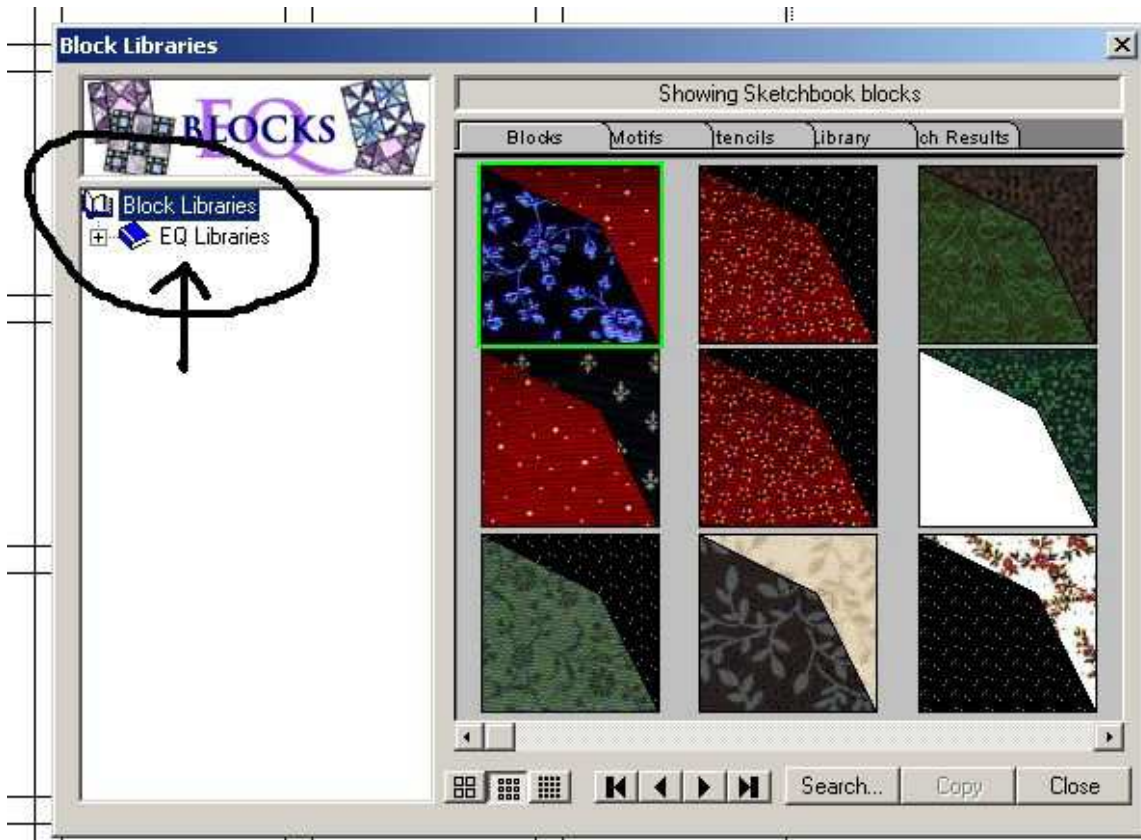


This week we are looking at how to use the foundation pattern for paper piecing.

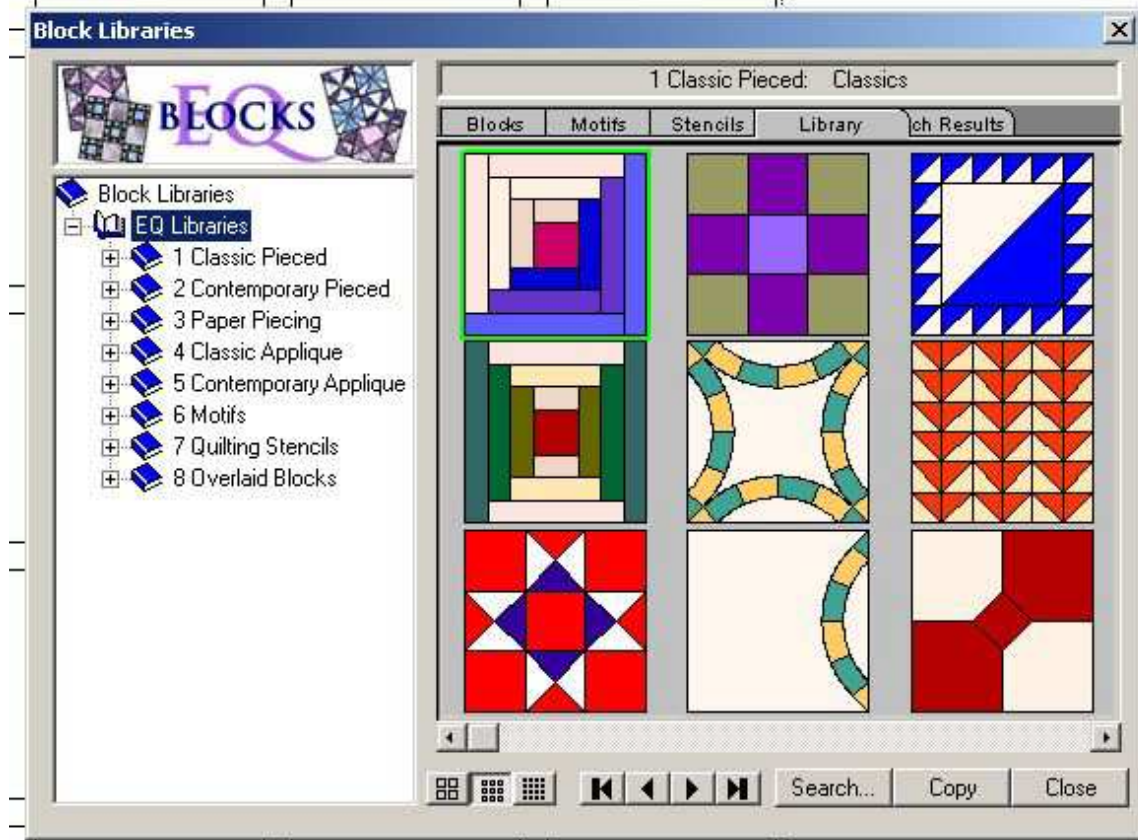
First open an EQ file and click on Libraries and then Block Library



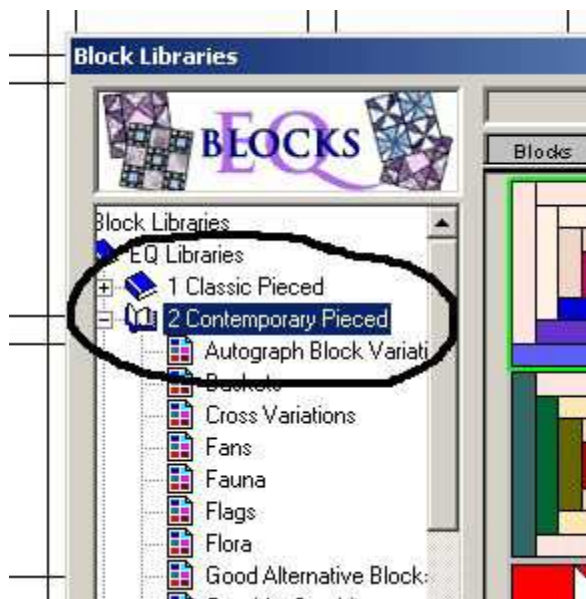
Click on Block Libraries and then EQ Libraries



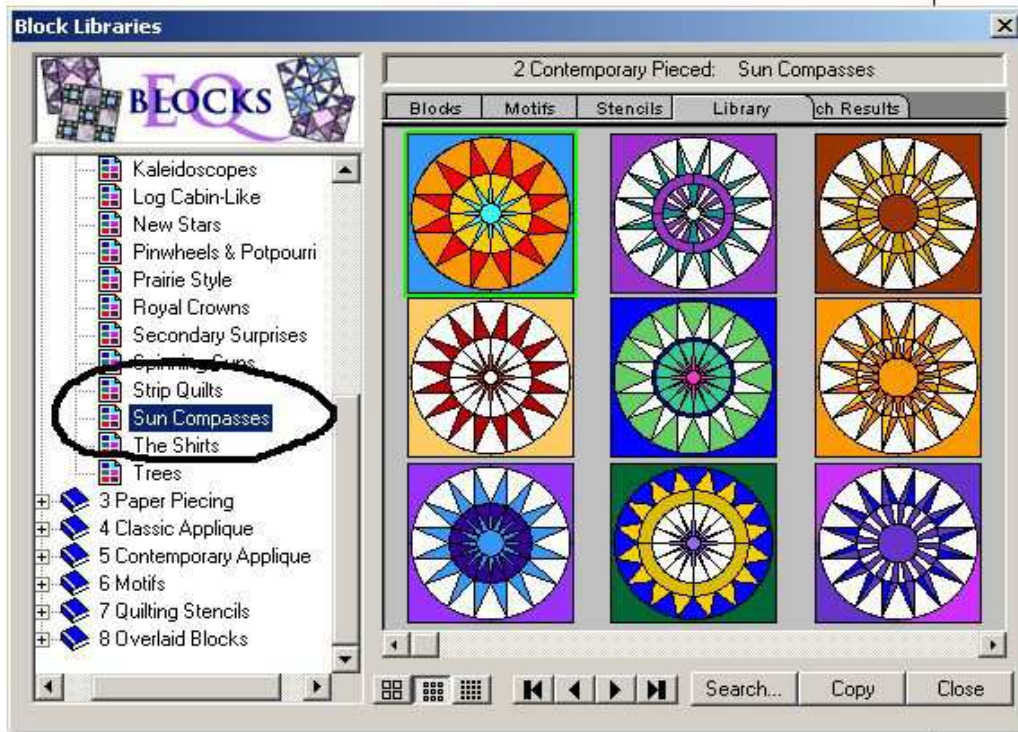
You will see this menu



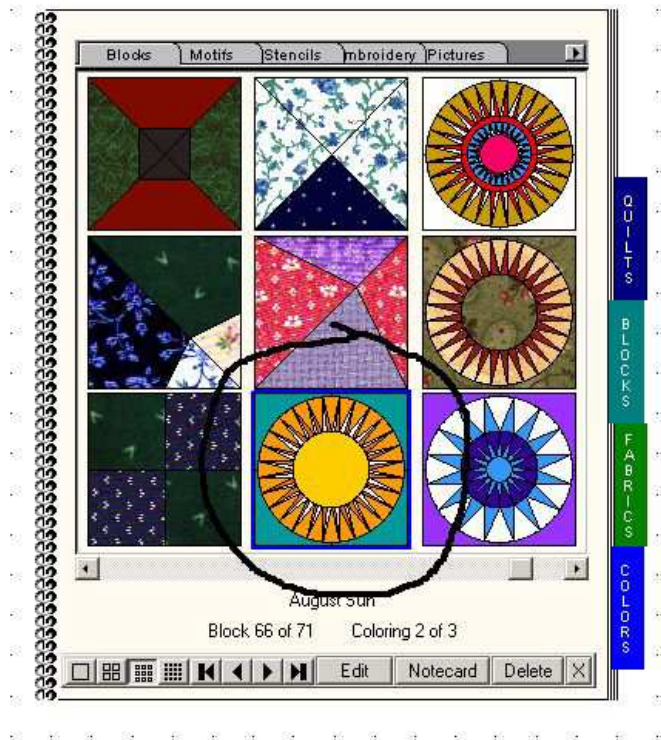
Now click on Contemporary Pieced



Find Sun Compasses and click on it. Choose which one or ones you want and click on them. Then click on copy to add them to your sketchbook.

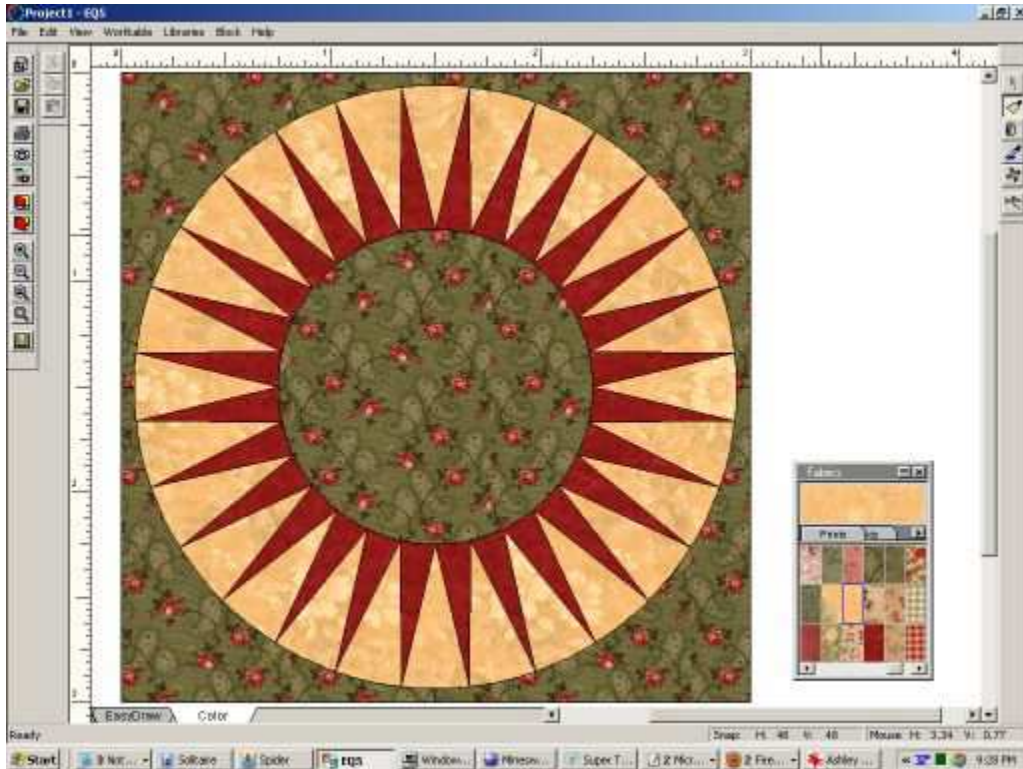


Open sketchbook /Choose Blocks /choose your Block then Edit to load it.

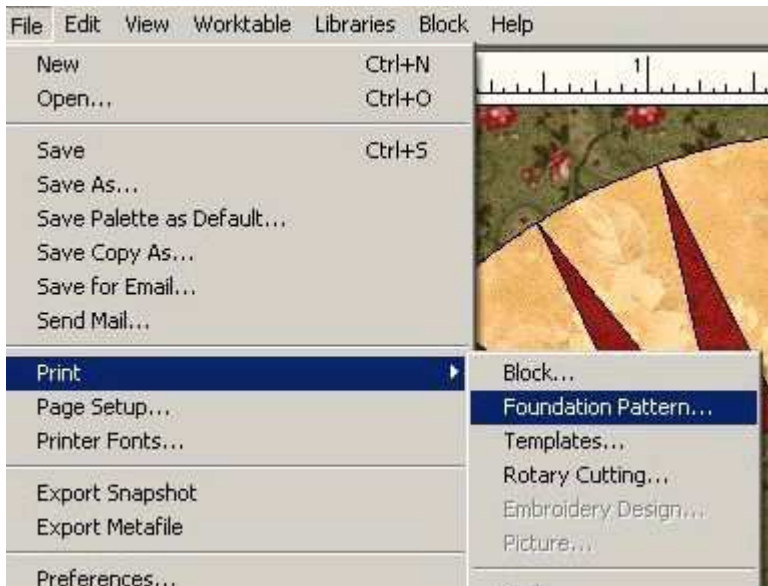




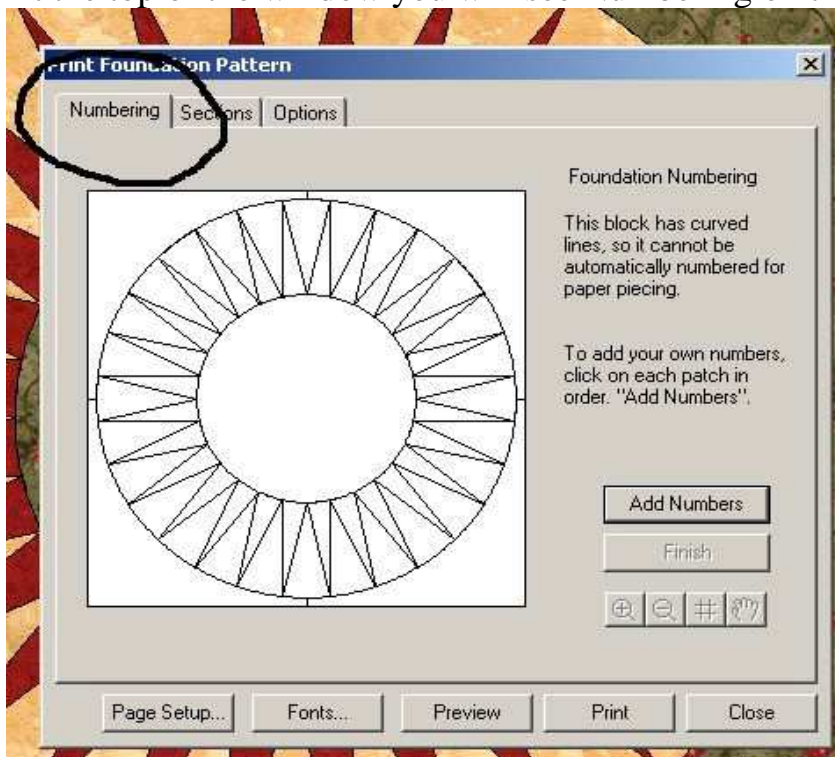
Here is the same block as above but I changed the colors



Click on File and then find Print and over to Foundation Pattern



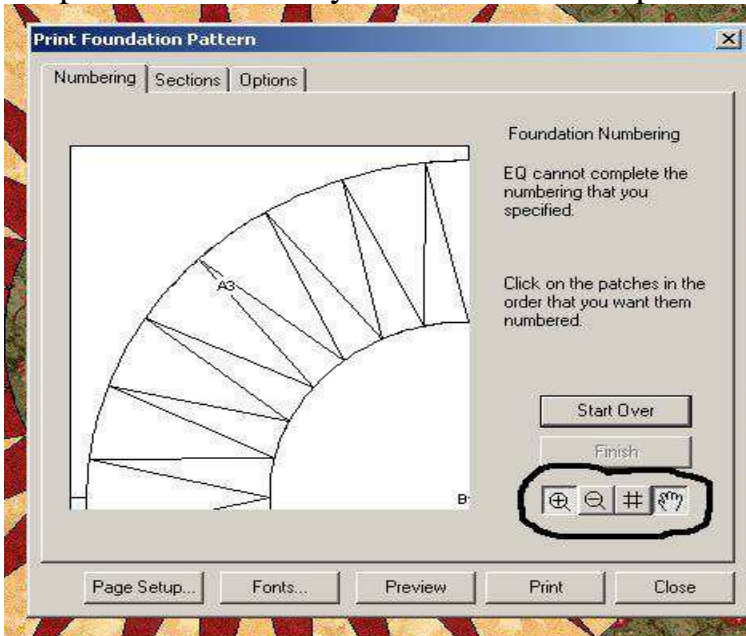
At the top of the window you will see Numbering on the left side



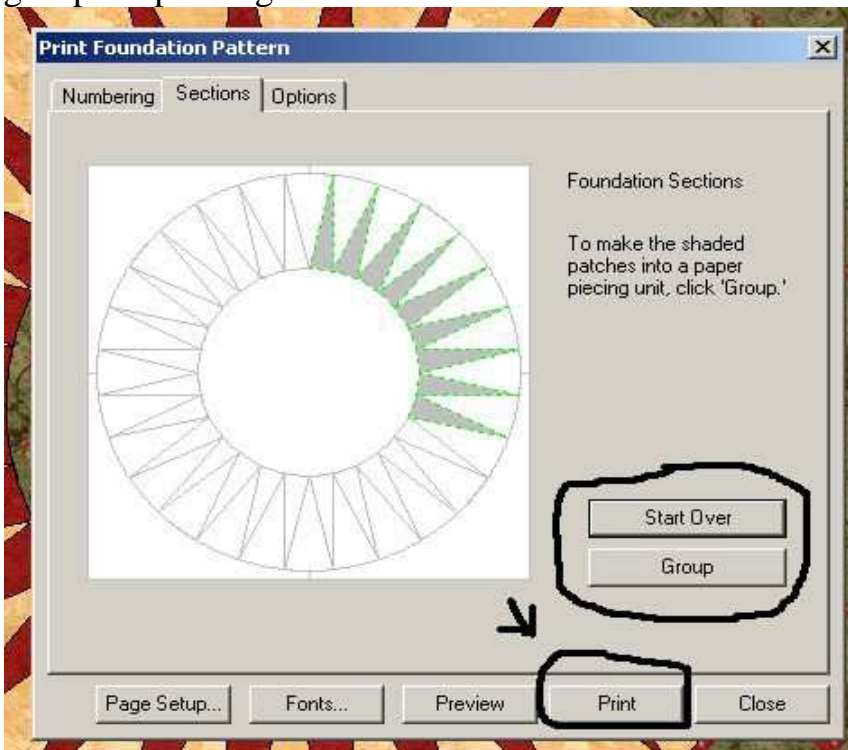
In the pic above here you see a button Add Numbers  
Click on it and then you can number the different pieces



At the bottom of the window is a small tool bar. Use the zoom in button to see a close up of the pattern. You can click on the # symbol to place numbers on the pieces. The hand on the right side will allow you to move the pattern around so you can number the pieces.

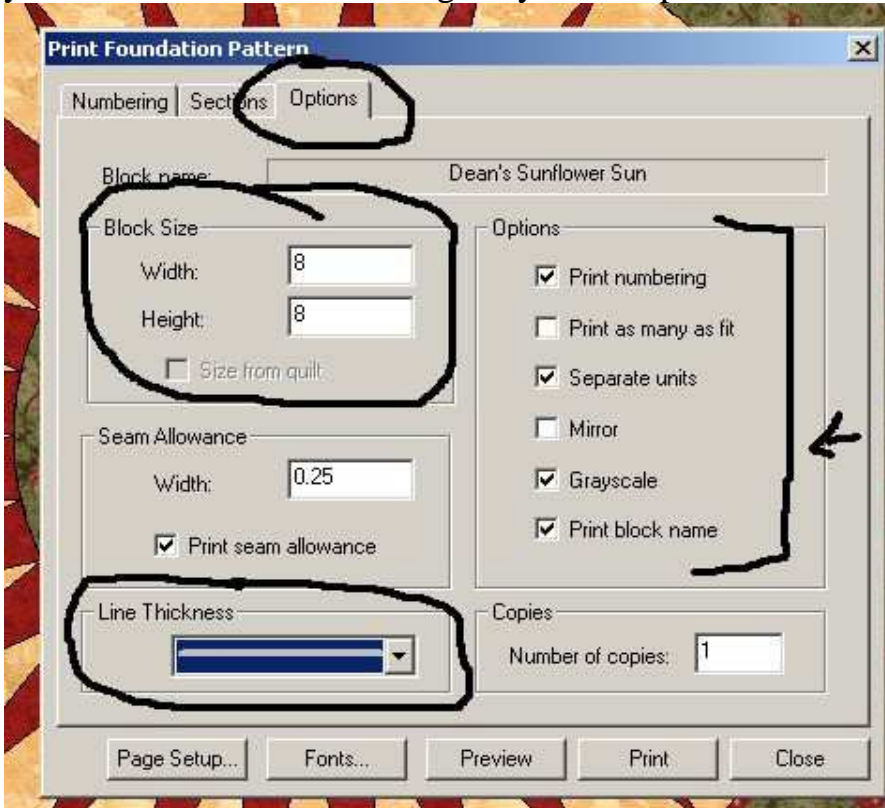


Click on Sections and you can click on the parts you want to include in a group for printing.





Options allows you to change the size of your block or the thickness of your line. You can also change any of the options on the right side.



Go back to Numbering and click on Preview to see your pattern then print.

