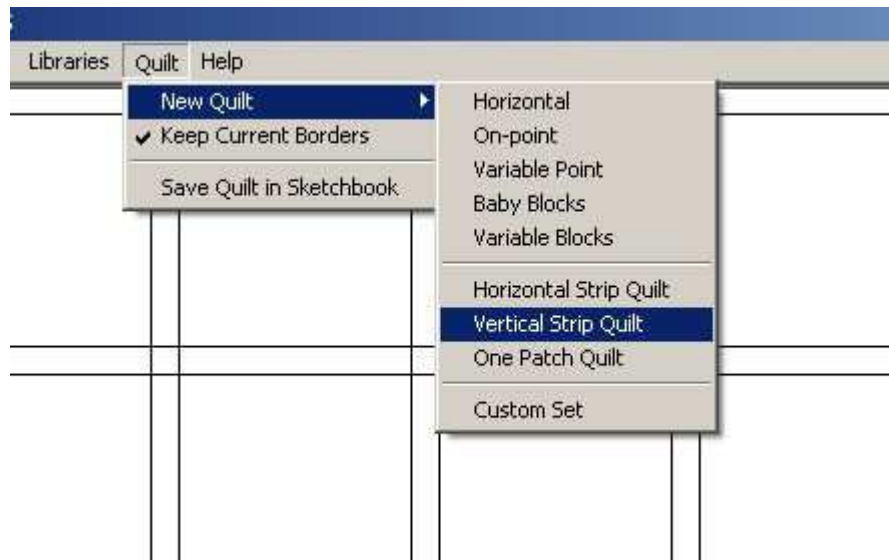


This is a lot easier than I thought it would be. I am amazed at the simplicity of the steps. When you follow along the steps make perfect sense.

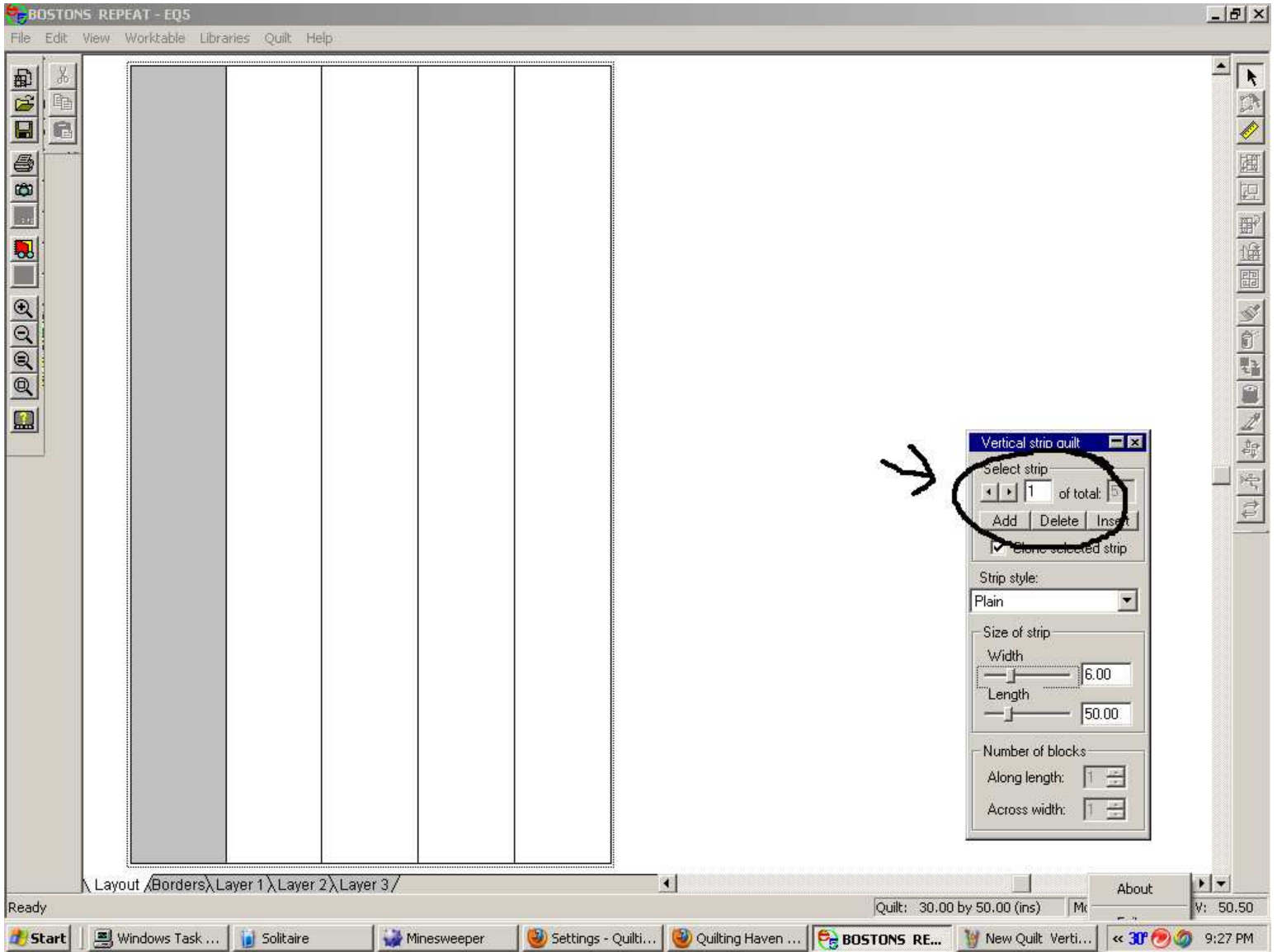
I started in the EQ5 manual as it is the only one that shows how to use the program to make a Bargello quilt. At least I couldn't find it in either the EQ6 or EQ7 manuals.

However you can use these steps in any of the 3 versions. So I switched to EQ7 half way through to make sure I could do it in 7 as well as 5.

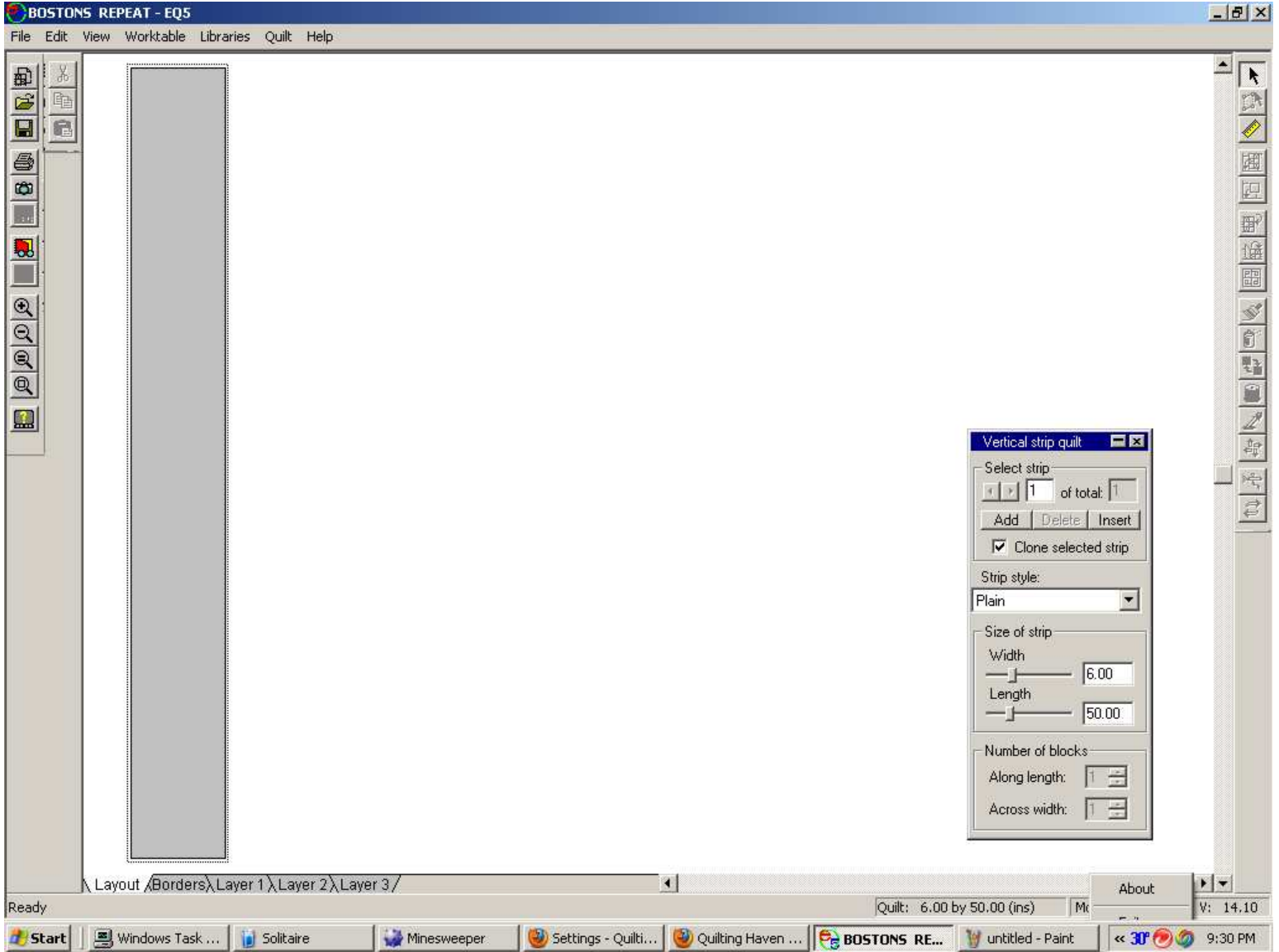
Okay now click on Quilt and choose Vertical Strip Quilt



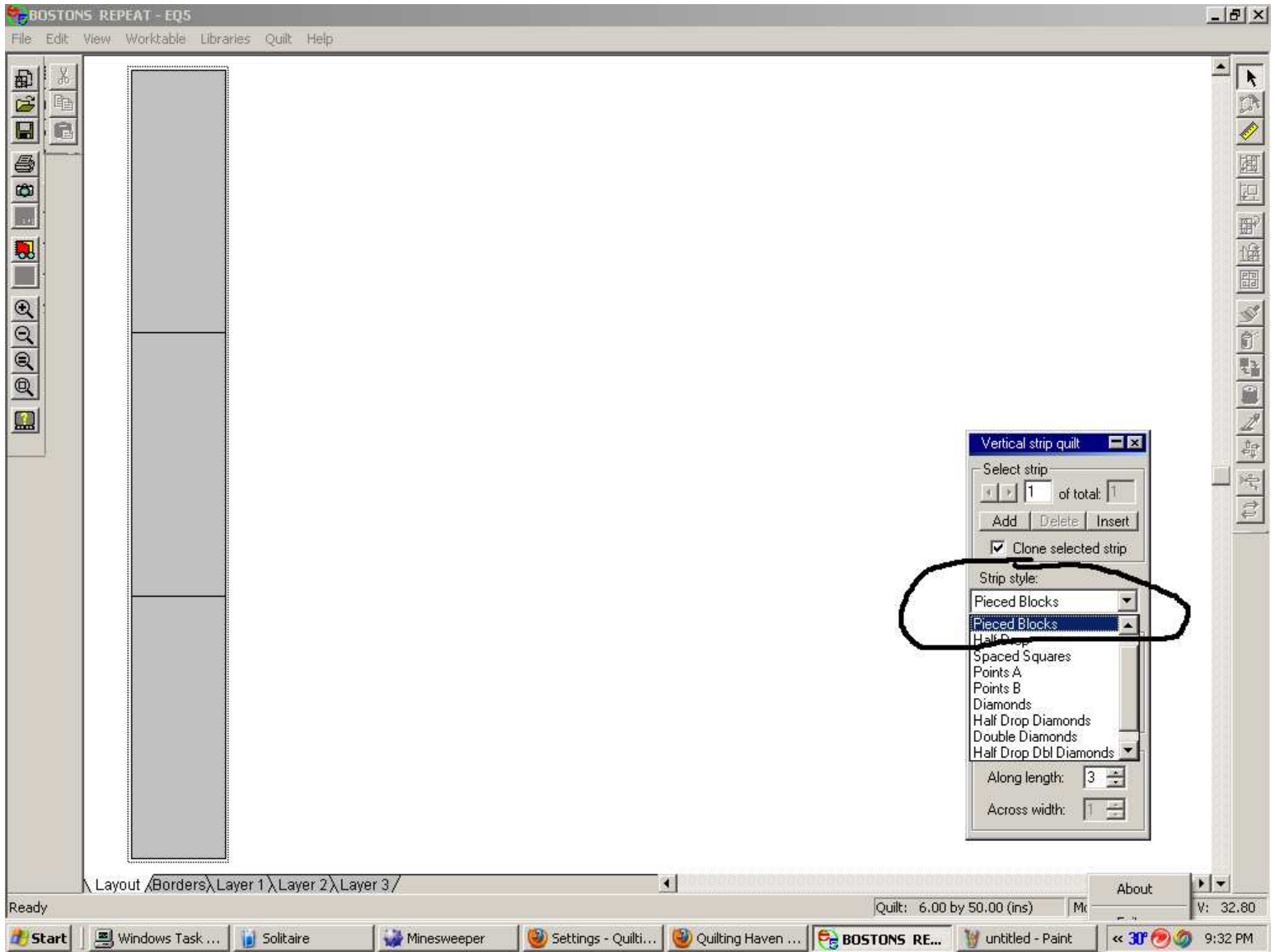
Now you have a vertical quilt. Next click on Delete under Select Strip and delete all but one strip



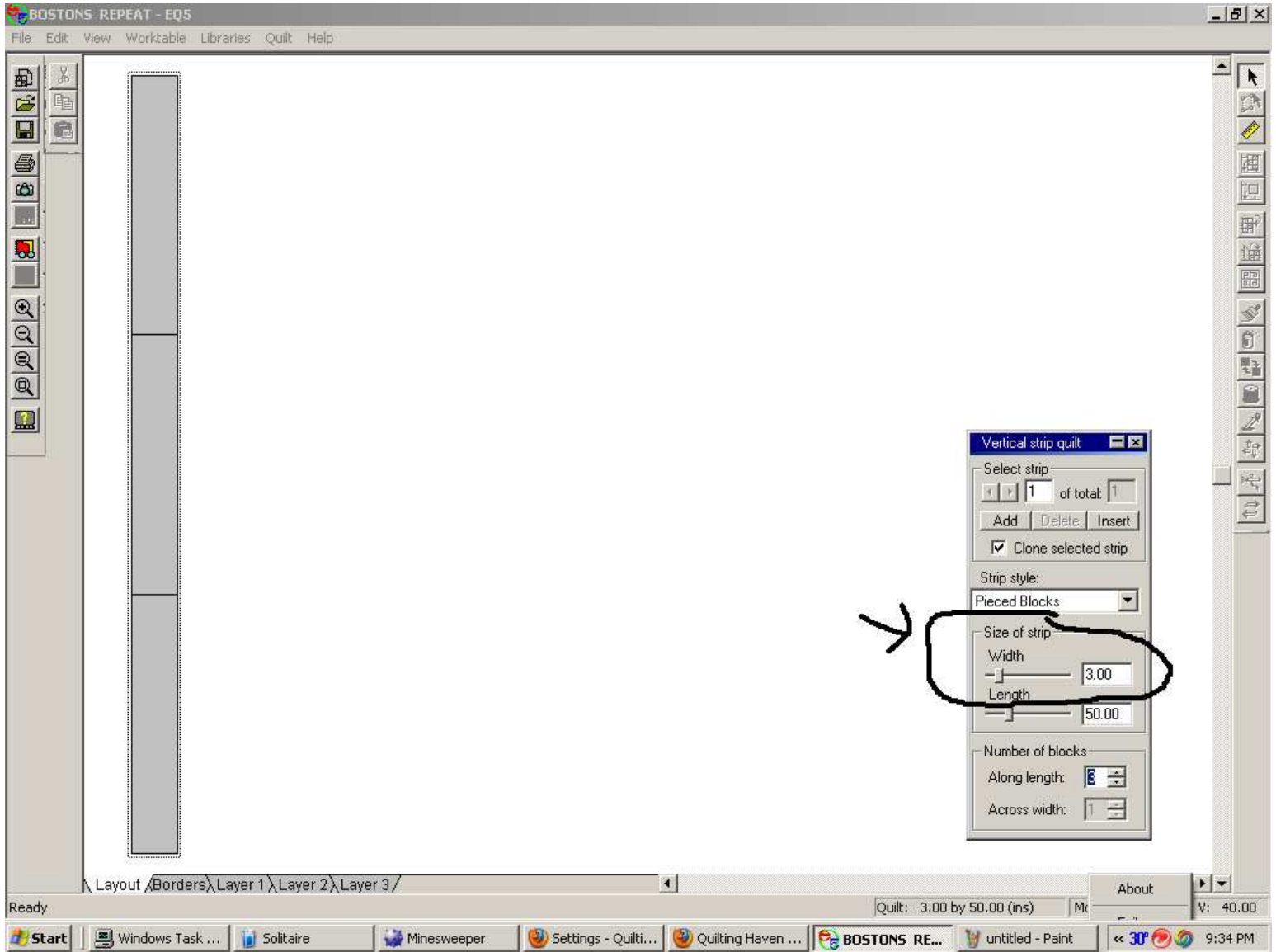
Then you have one strip



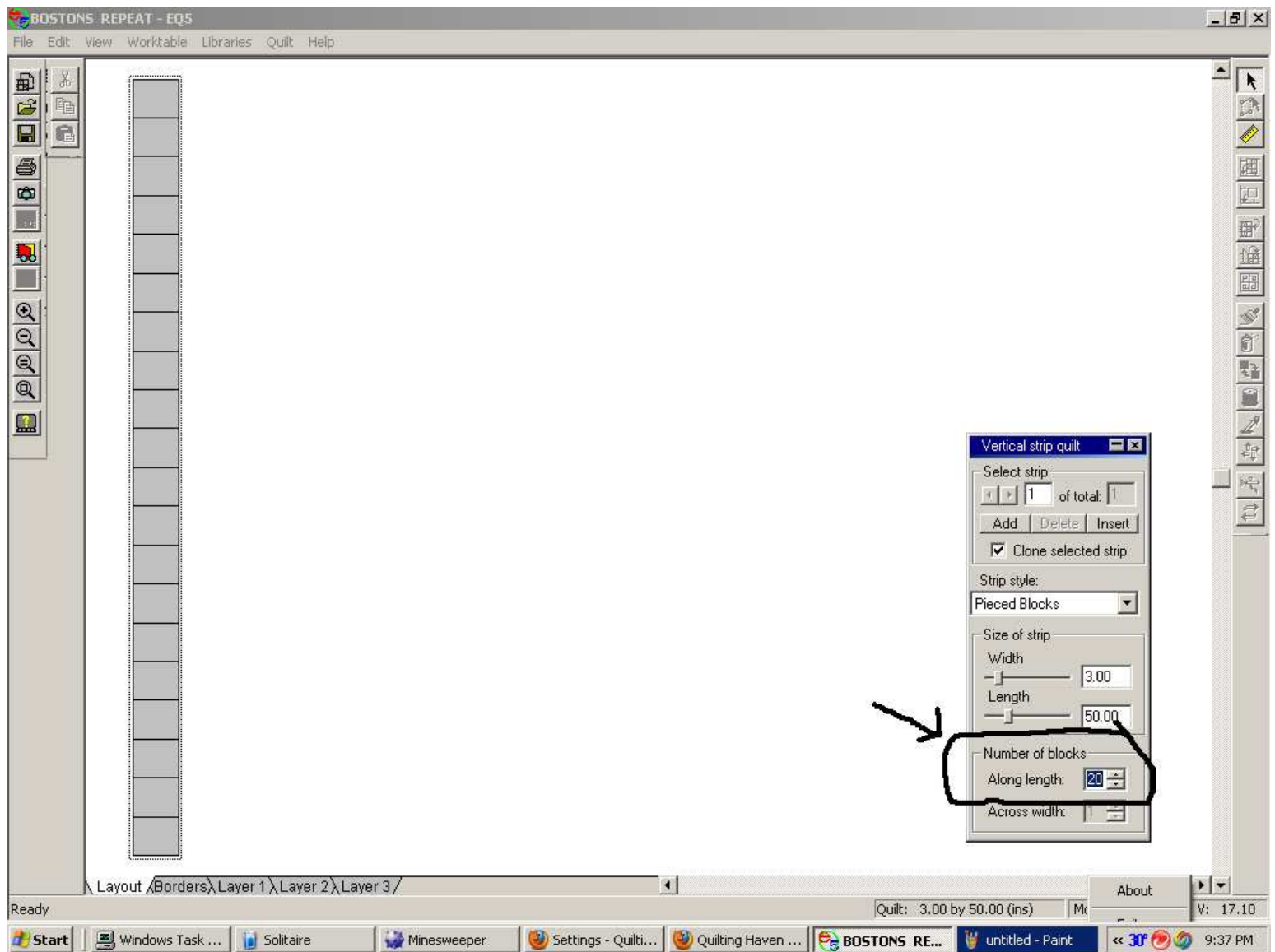
Find the Strip Style and choose Pieced Blocks



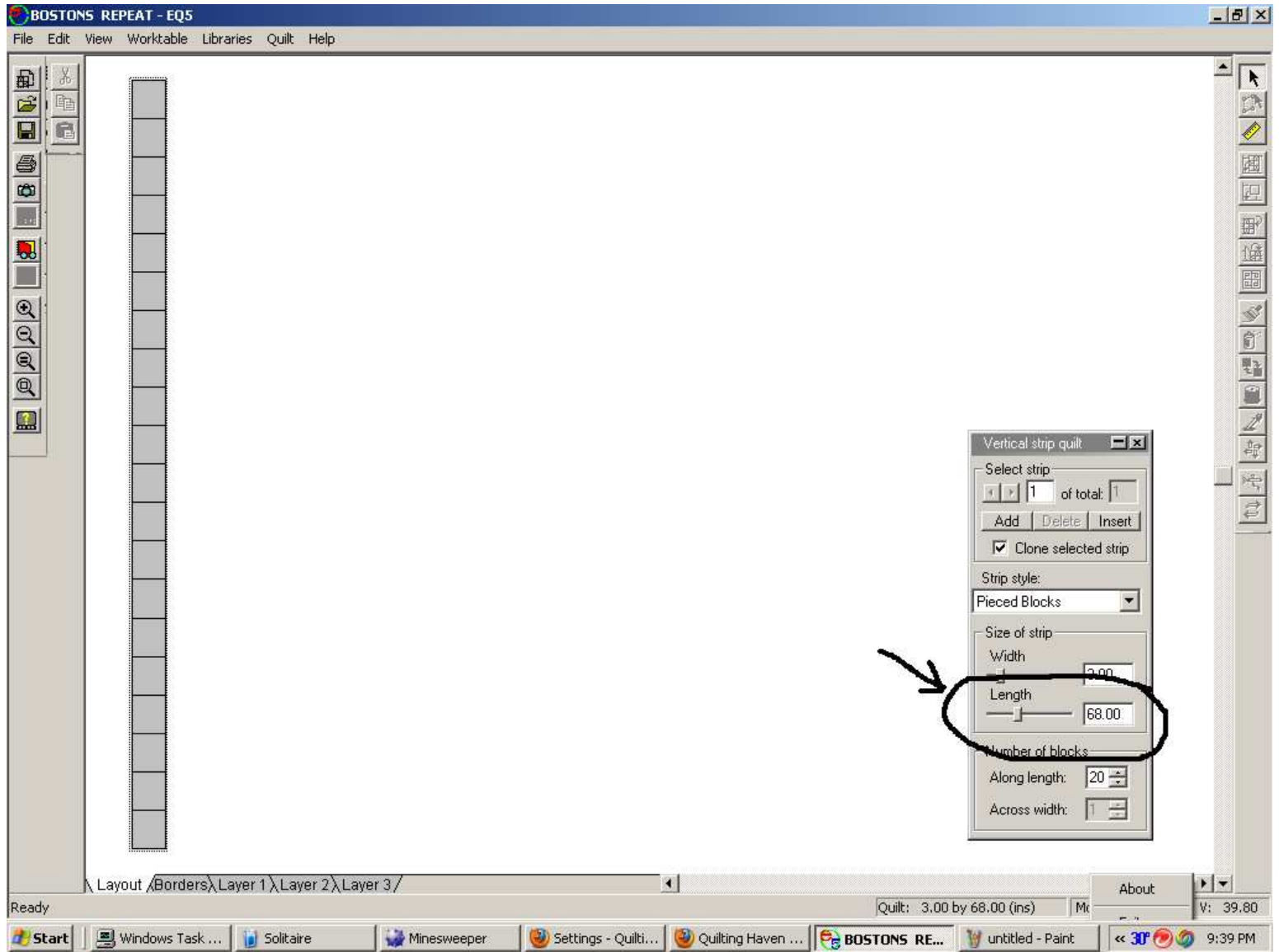
Change the width to 3” I am using the numbers the manual used. I am sure you can choose to use any number you want to when you start.



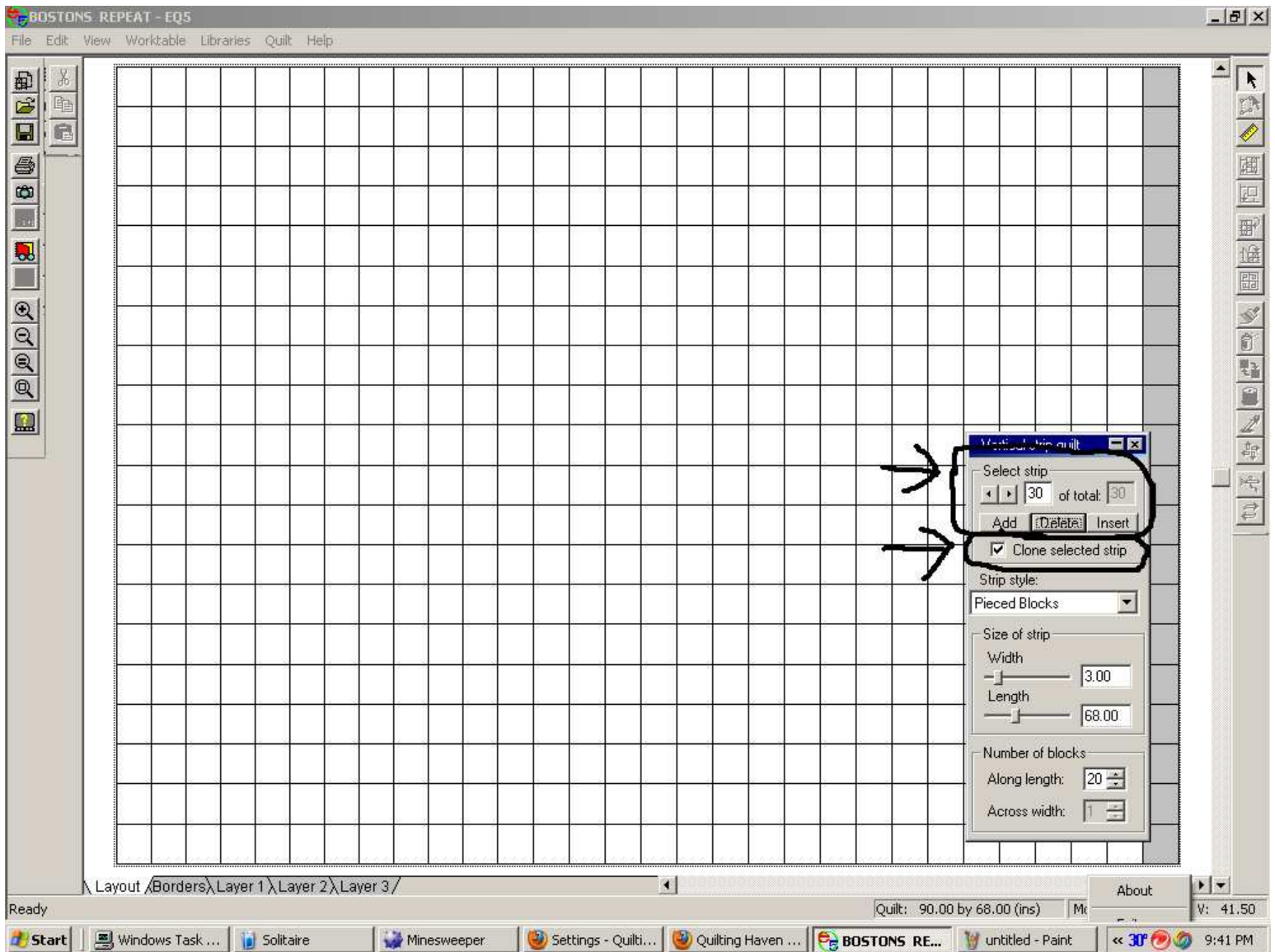
Next change the number of blocks to 20. Here again this is up to you. I am just using what the manual used.



Okay now change the length to 68

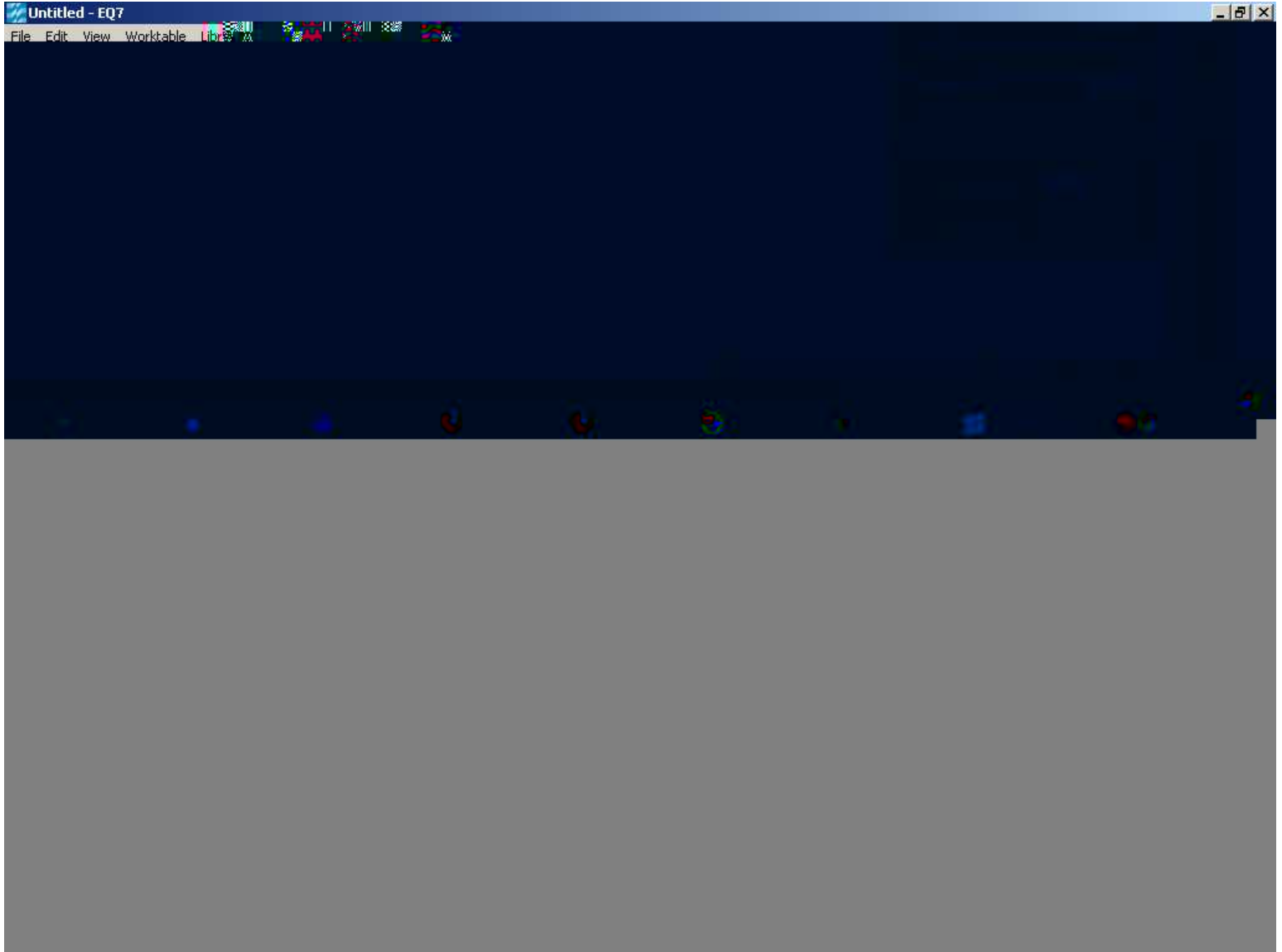


Make sure you check Clone selected strip.
Add strips til you have 30 strips in total



Now if anyone thinks there is a hard part this might be it. It is a bit tedious to do but necessary.

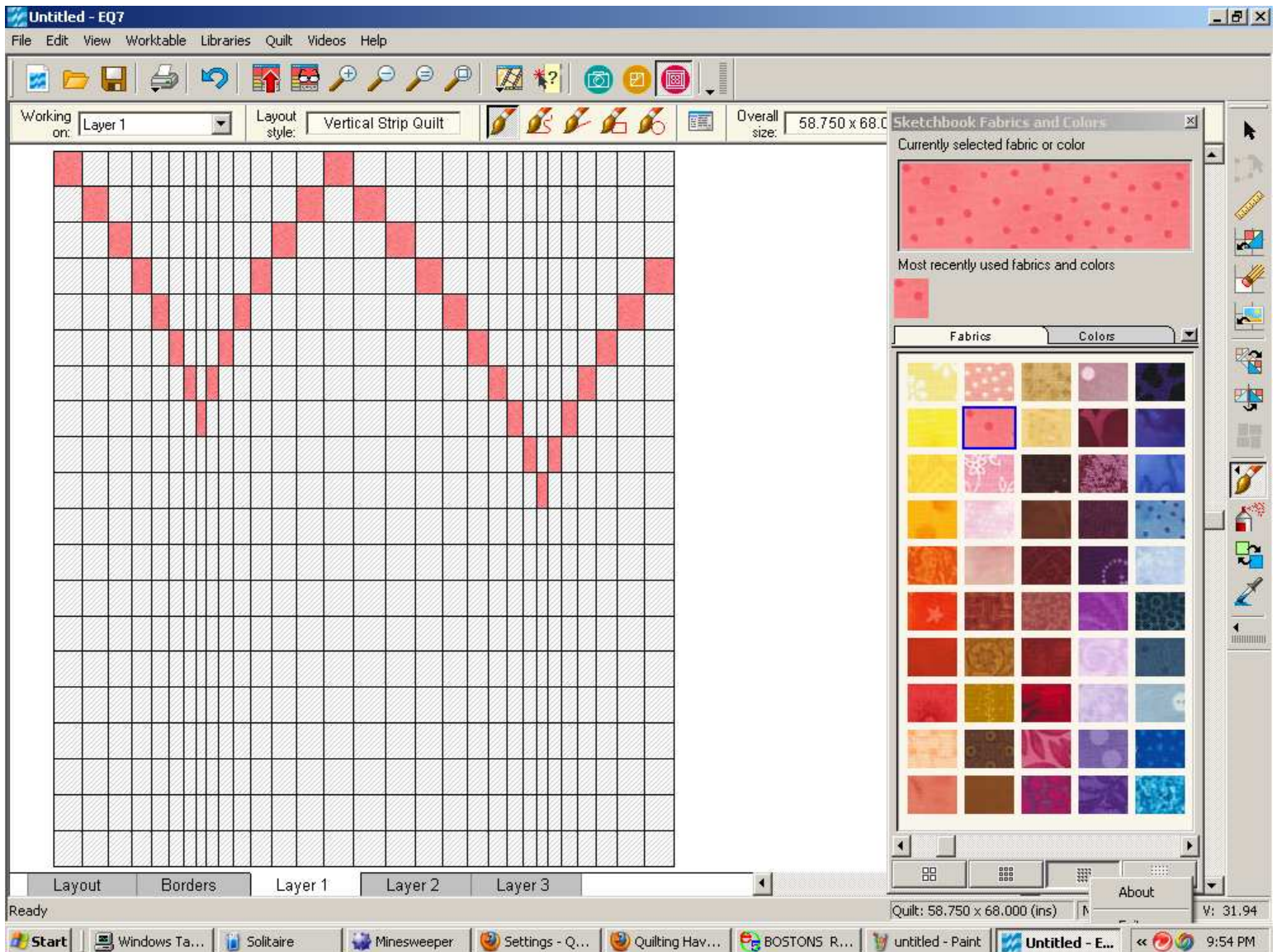
Click on the strip on the left hand side. Change the width to 3". Then click on the next strip and reduce the size by 25 or 50 depending on what you want to do. I used 25 here all the way across. You can mix it up and do it however you like.



Typically you change each strip in size til you get to the smallest size you are willing to use. These are strips plus seam allowance. So if you are using a 1 1/2" strip in the diagram you will actually cut the strip 2" but represent it here with 1.50. Go to the smallest size and then start going back up in size til you get all the way across the quilt. I started with 3" and went down to 1 1/4" and then went up to 3" again and back down. I ended with 2.75 on the right side.

You can use any sizes you like and make any changes that appeals to you once you understand the process.

Here you can see where I began adding color. The manual suggests you start with a dark color first.



When choosing the pieced blocks strip style you can also use Half Drop or Spaced Squares strip styles.

To create a more gradual look to your bargello try using Half Drop every other strip so you would have Pieced Blocks in the first one and Half Drop in the next one. Make sure you have Clone checked and then you can go back and forth between the two styles cloning and adding them as you need to so the Pieced Block is every other one and Half Drop is every other strip.

To add another dimension to your quilt you could also add a plain strip between them as well. This would break up the look some and create a whole new look. How often you add the plain one and where is up to you.

Experiment and see what you can come up with and have fun!