

This week I was asked if it was possible to design a block in one project and move it to another project to use there. So here we are going to look at

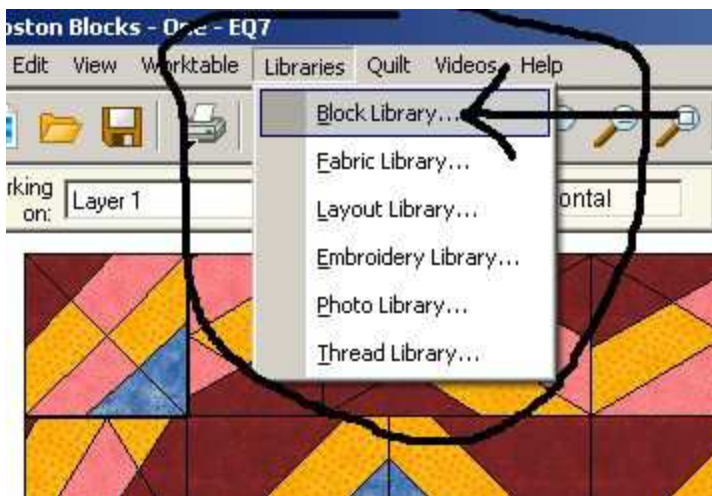
Setting up a Custom Library and Adding Your Blocks to it.

I apologize to the EQ5 users. I had done this in EQ5 previously but when writing this lesson my EQ 5 wouldn't let me open the user library. So I am doing this lesson solely on EQ7. I didn't look but I imagine this can be done on EQ6 as well. If anyone wants to ask you can pm me and I will check it out.

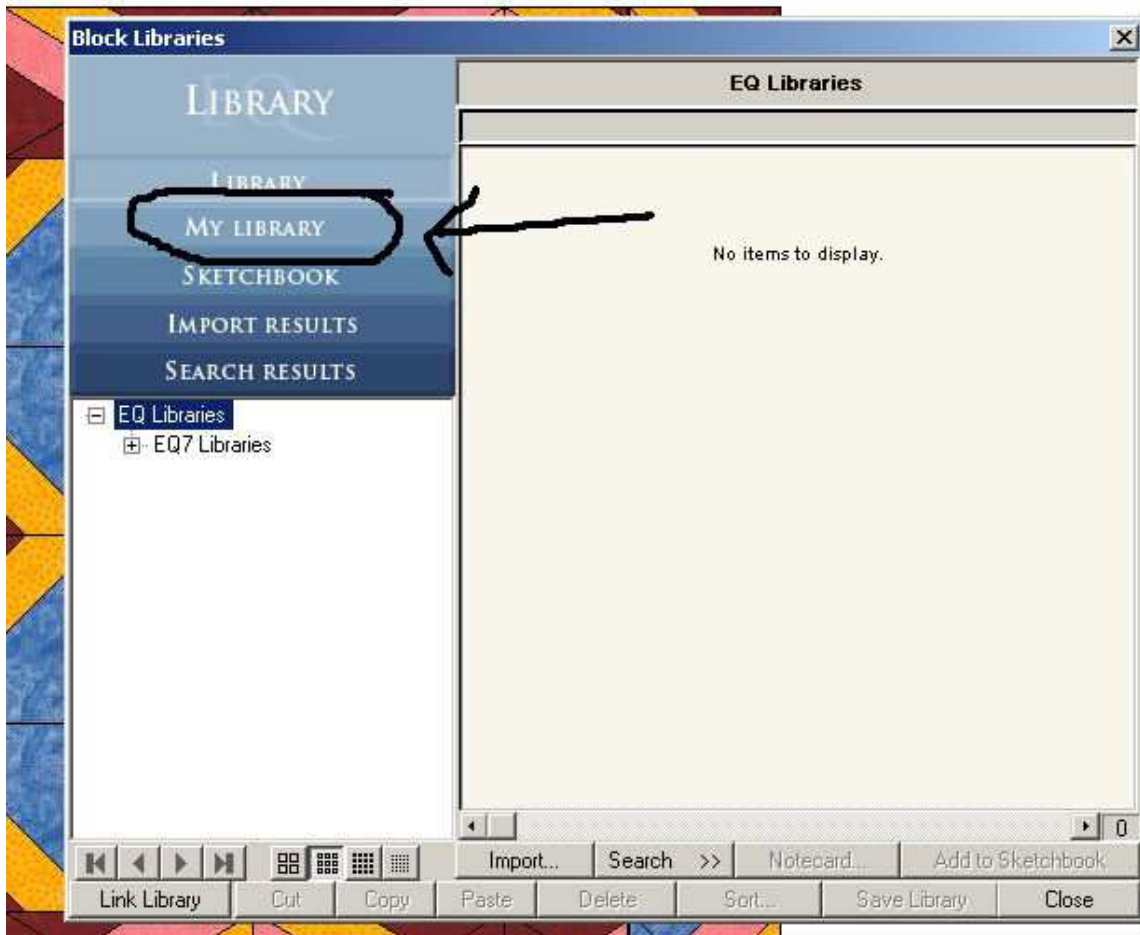
If I get EQ5 to cooperate I will add that version at a later date. Because EQ5 is a very old version it has some kinks and this seems to be one of my EQ5's.

So here we go on EQ7!

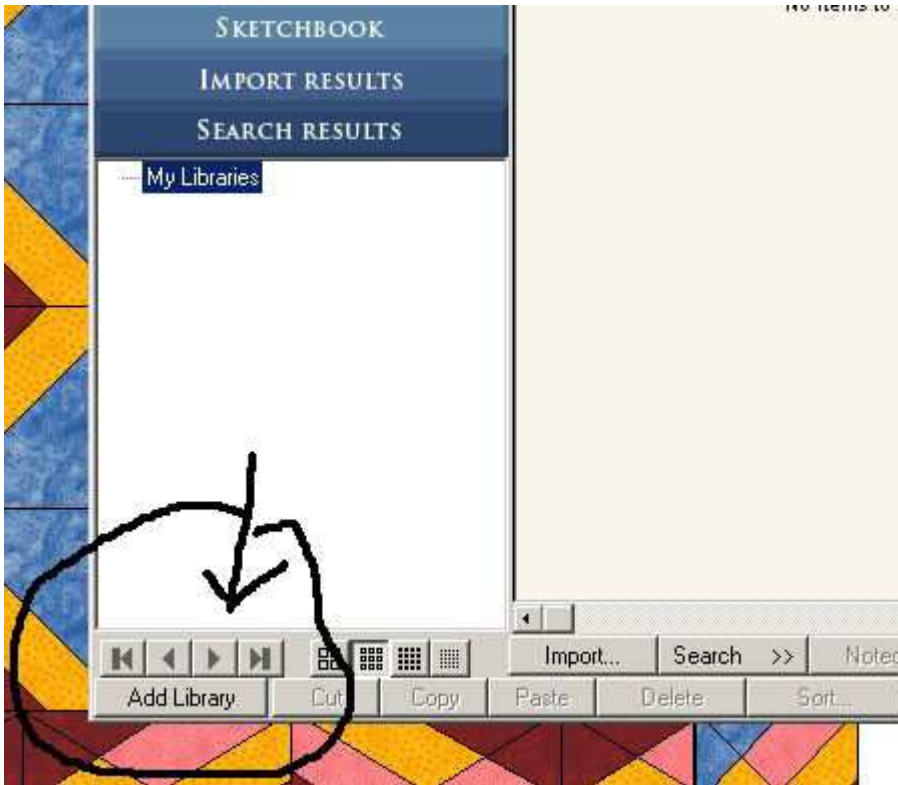
Click on Library and then click on Block Library as we are going to be adding Blocks.



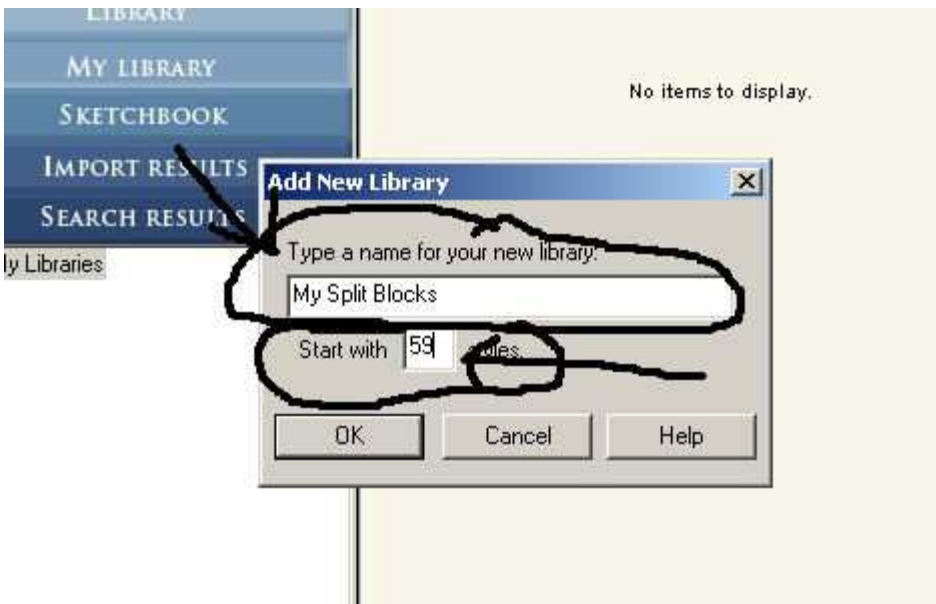
Once you are in the menu then click on My Library



Below at the bottom you will see Add Library - Click on that.



Now you should see a pop up window that asks you to type in a name for the new library. You can add from 1 to 59 subsections. Then click on OK



Here you see it is now My Custom Libraries

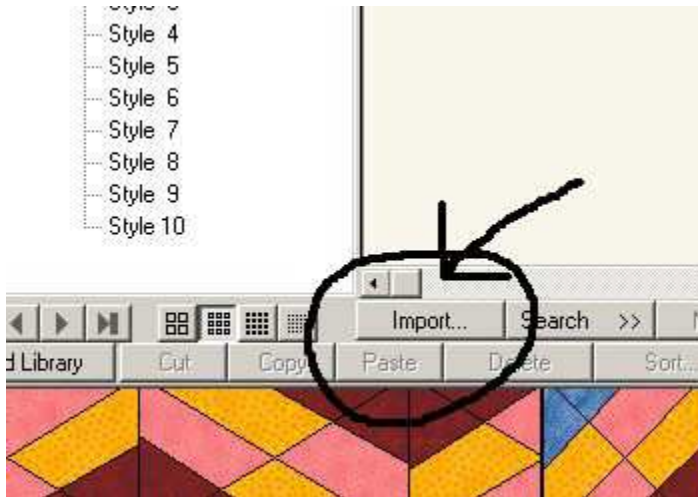


With your subsections below it.
To rename the subsections just right click and rename.

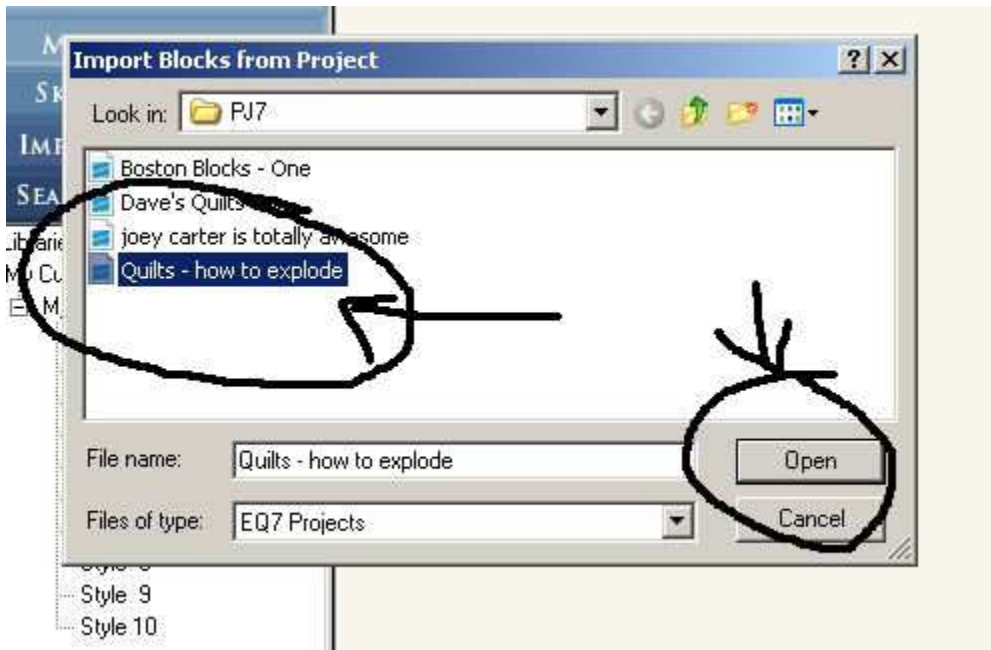


OK now on to getting those blocks you want to add.

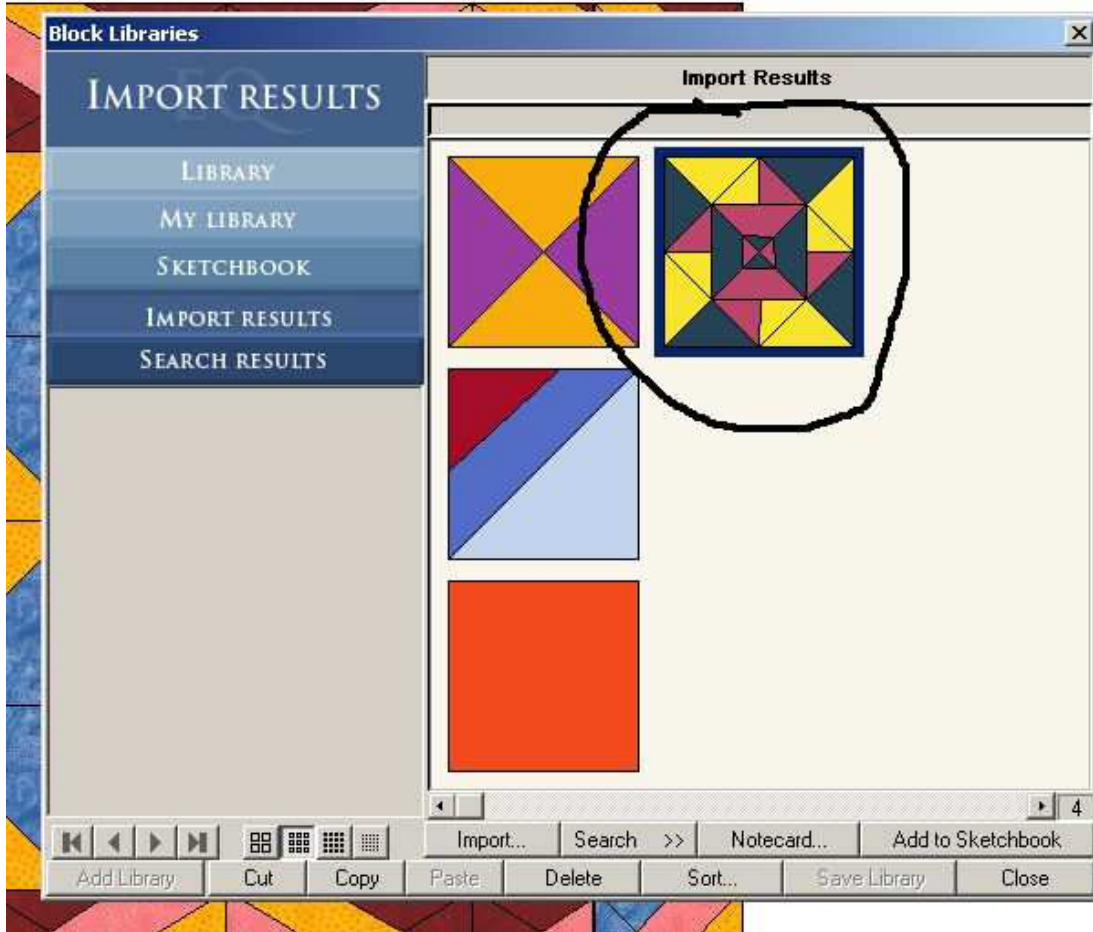
Click on Import and a window will pop up



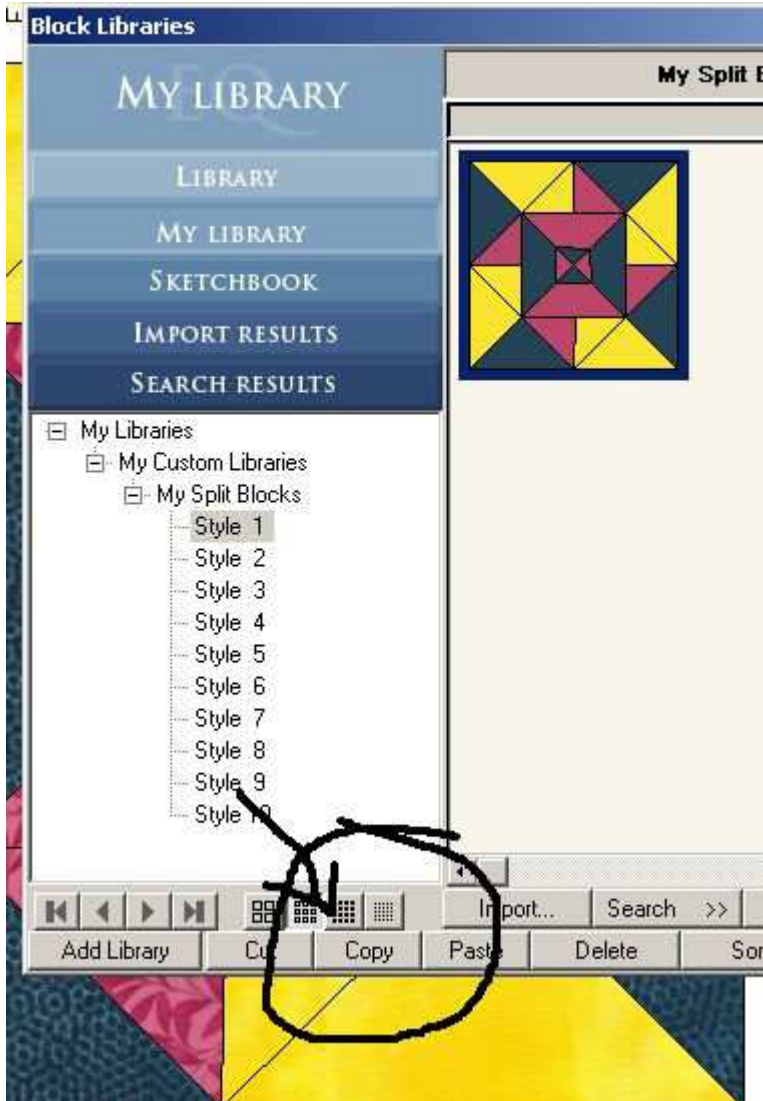
Here is the window and you need to click on the project you want to get your quilt block FROM. And then click open



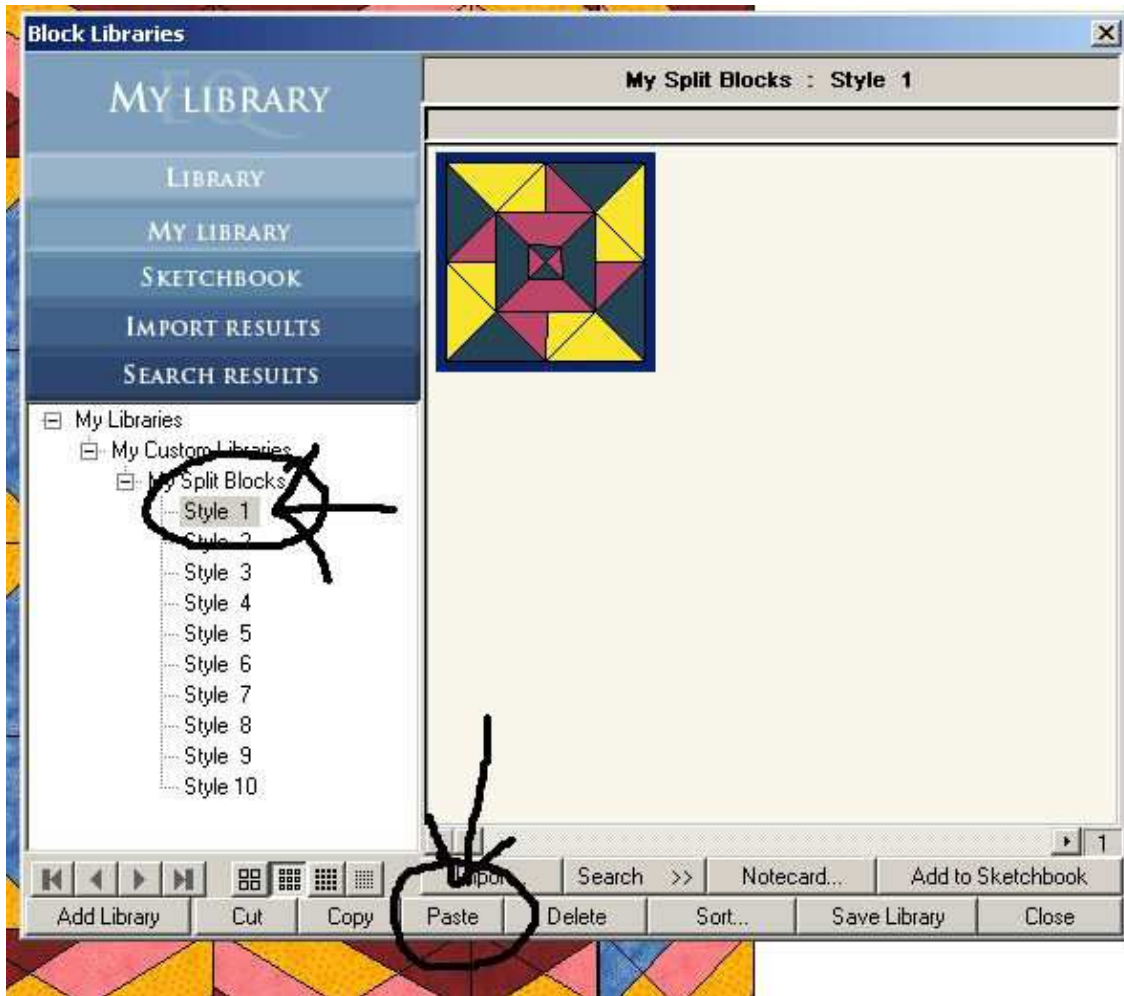
Now you have quilt blocks that are in the project you designed the block(s) in. Click on the block you want to import. You can also hold down the ctrl key while you click on all the blocks you want to import.



Now at the bottom of this window click on copy. And then click on the Library you want to use. I used Style 1. I didn't take the time to rename my libraries. Hope this doesn't confuse anyone.



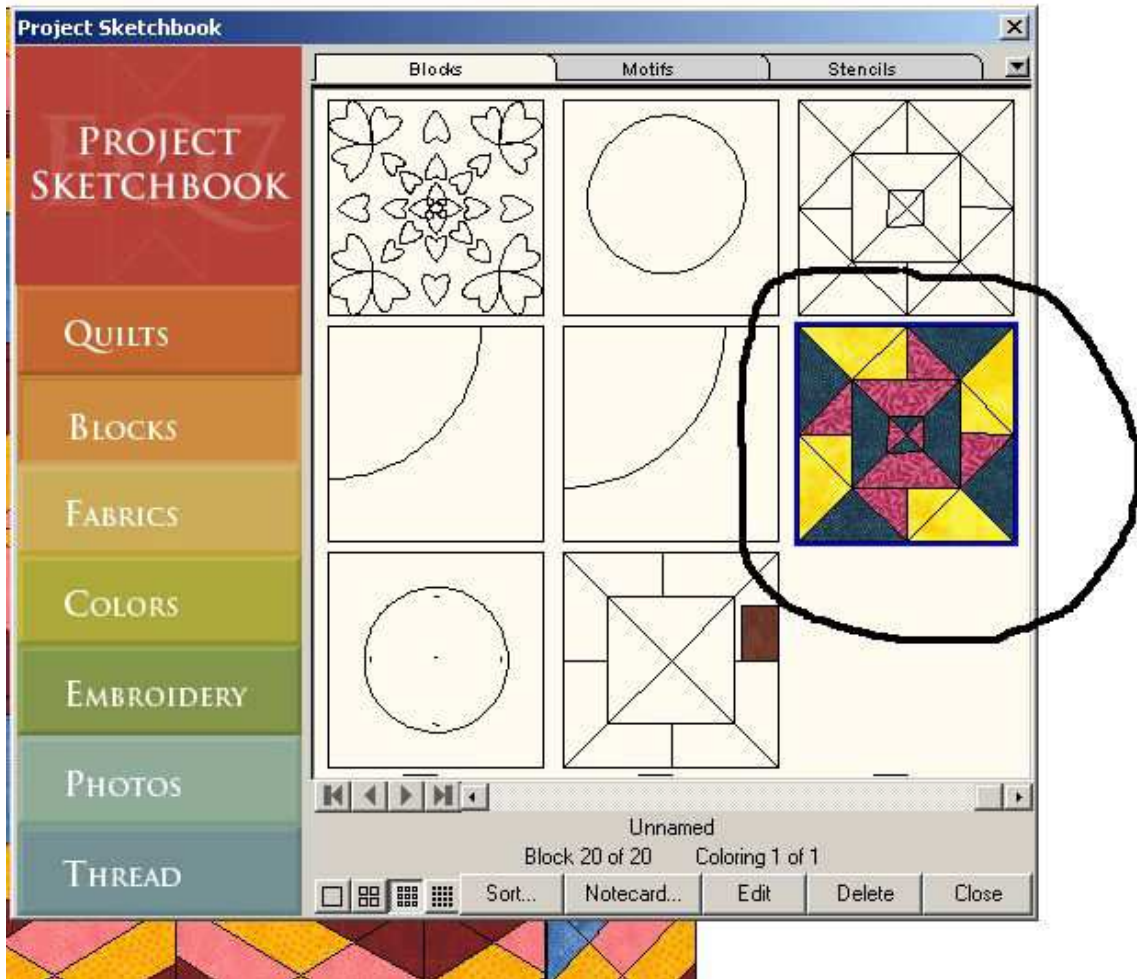
As I said above I used Style 1 and so I clicked on Style 1 and then clicked on paste - this is at the bottom of the window. Then click on Close



Now your quilt block is in your CUSTOM LIBRARY.

When you are done you now need to open any project you want to use this block in and save it to the sketchbook in that project.. Just follow the first few steps to open your library and then your custom library to find this block. Then click on Save to Sketchbook at the bottom right corner

You can see here in the sketchbook I saved the block in a totally different project than I started out with.



If you have any questions or need any help walking through the steps just let me know!! Pm me on the Board or email me @ patchesbyr@yahoo.com Rhonda