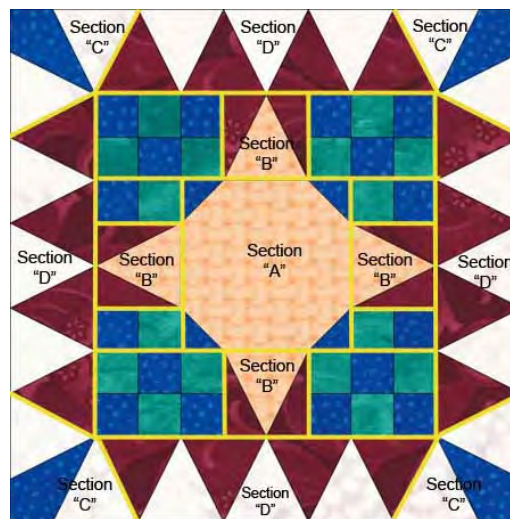
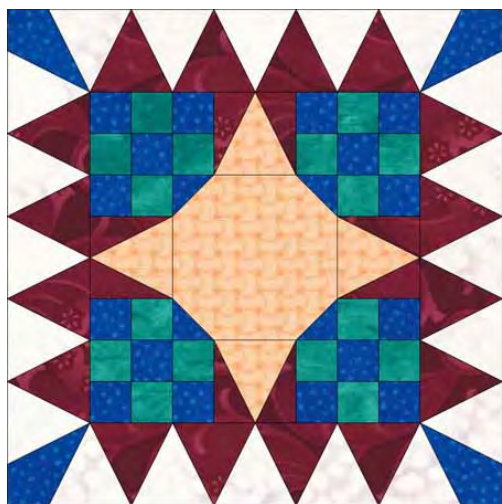


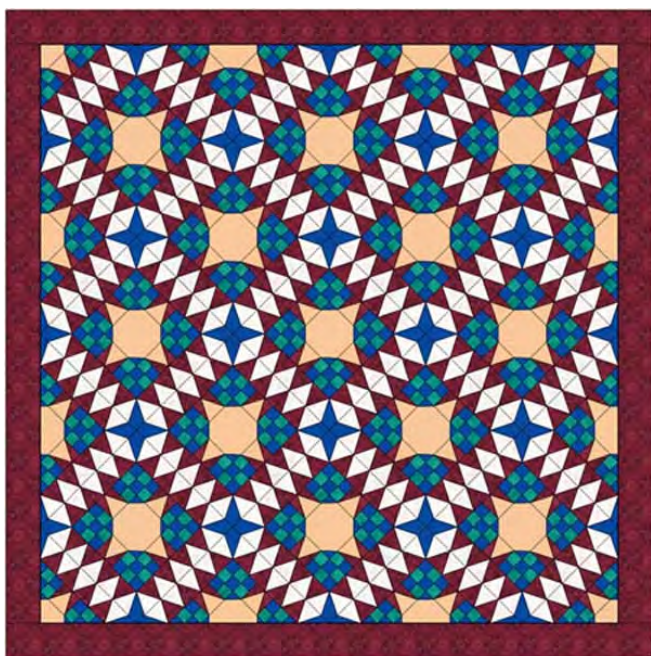
I drew this block using the EQ Stitch program, with the intent of having a special block for those that were in need of some extra prayers. I personally have never seen a block like this one nor have I heard from anyone



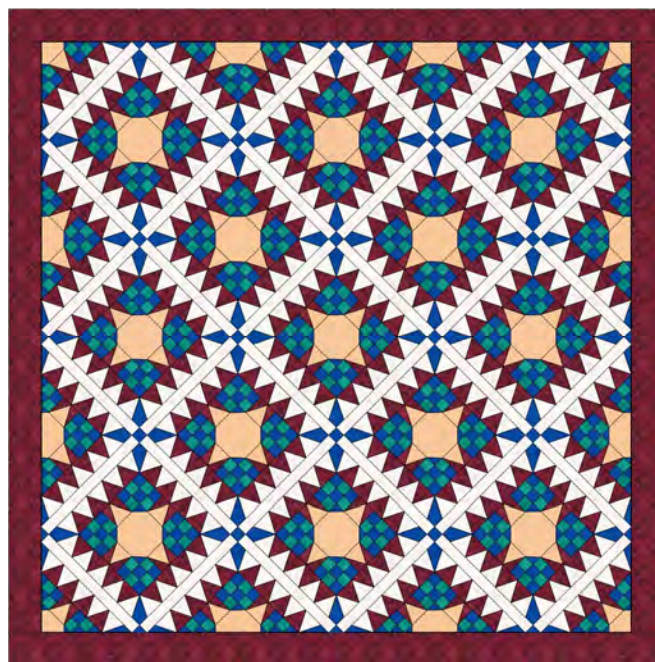
that has seen it, so I think it is a new block.

I have tested this block several different ways on putting it together and the best way for me, was using both paper pieced and strip piecing methods. Above is the diagram of how I broke it up into sections. Each section shown was done as paper piecing, the parts NOT shown as sections were done as strip piecing.

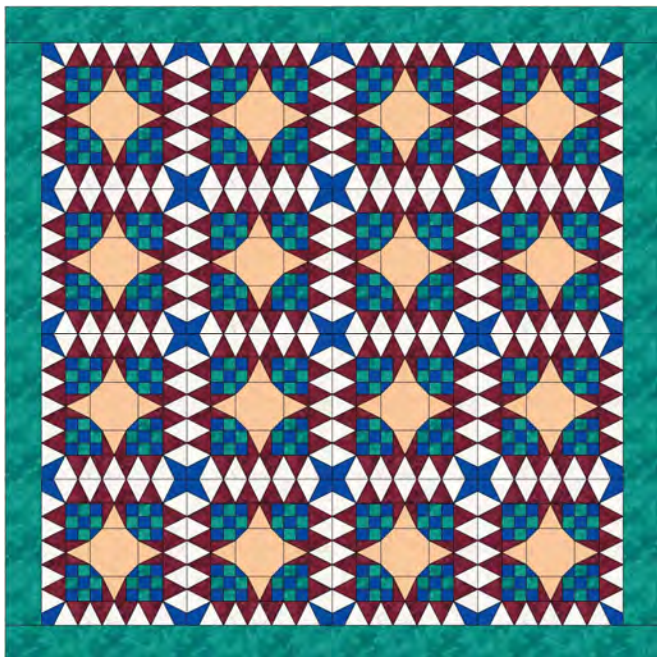
My block was done as a 12" finished size. Here are a few of the designs I came up with. Some without sashing and some with. Also, I have added one done using different colors in each corner of the block to give you an idea of what can be done with this block.



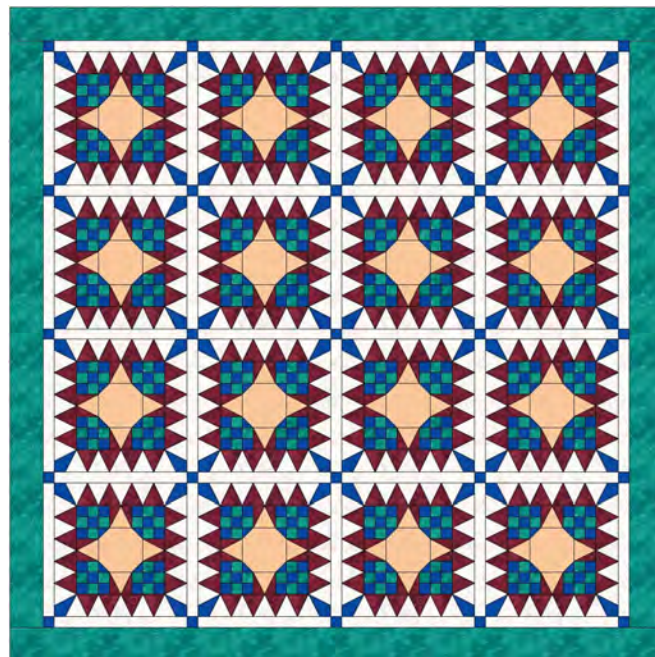
On Point No Sashing



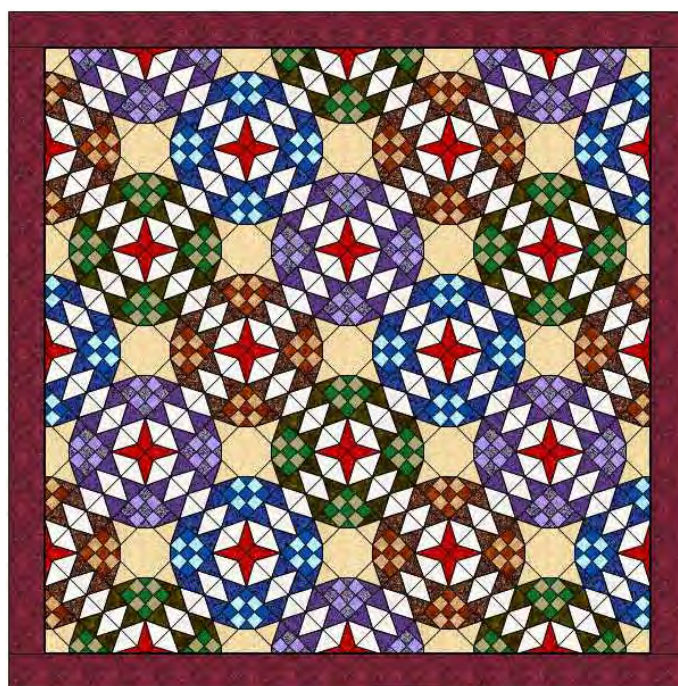
On Point With Sashing



Straight Set No Sashing



Straight Set With Sashing



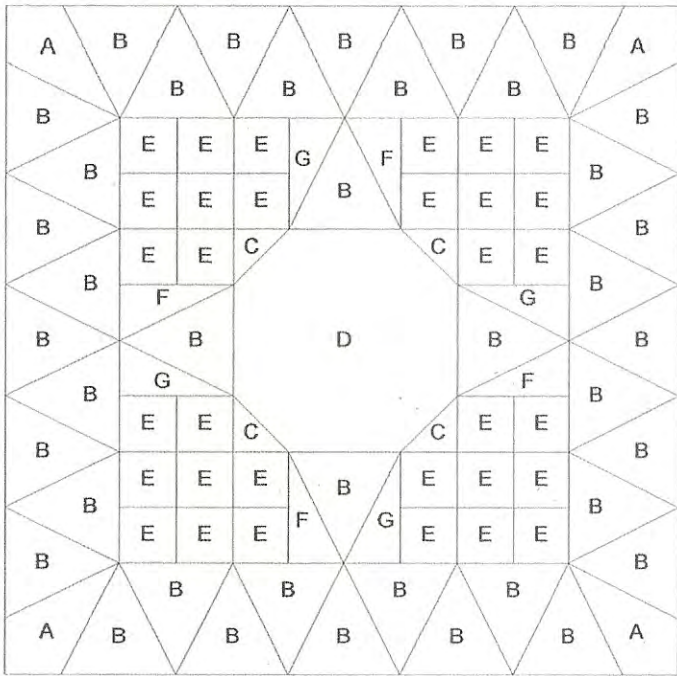
On Point No Sashing Multi Colored

The next pages will be the Templates for either piecing the whole block or paper piecing the sections and then joining them. I have tried to label each page so you will know what they are for. All parts NOT shown as sections were done with 1 1/2" strips sewn together and cut to size. I have not included instructions on it here because I'm sure most of you know how that is done.

I have included the half blocks and corner blocks for the On Point Setting of the quilt so it will be easier to do those as well.

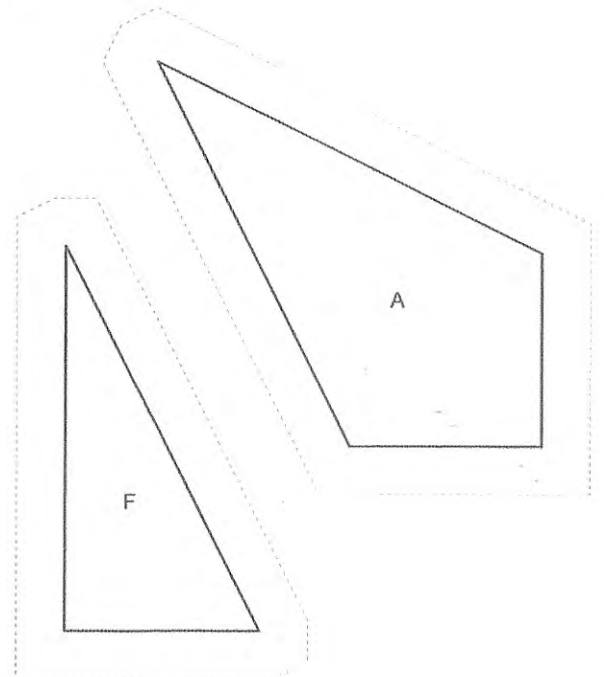
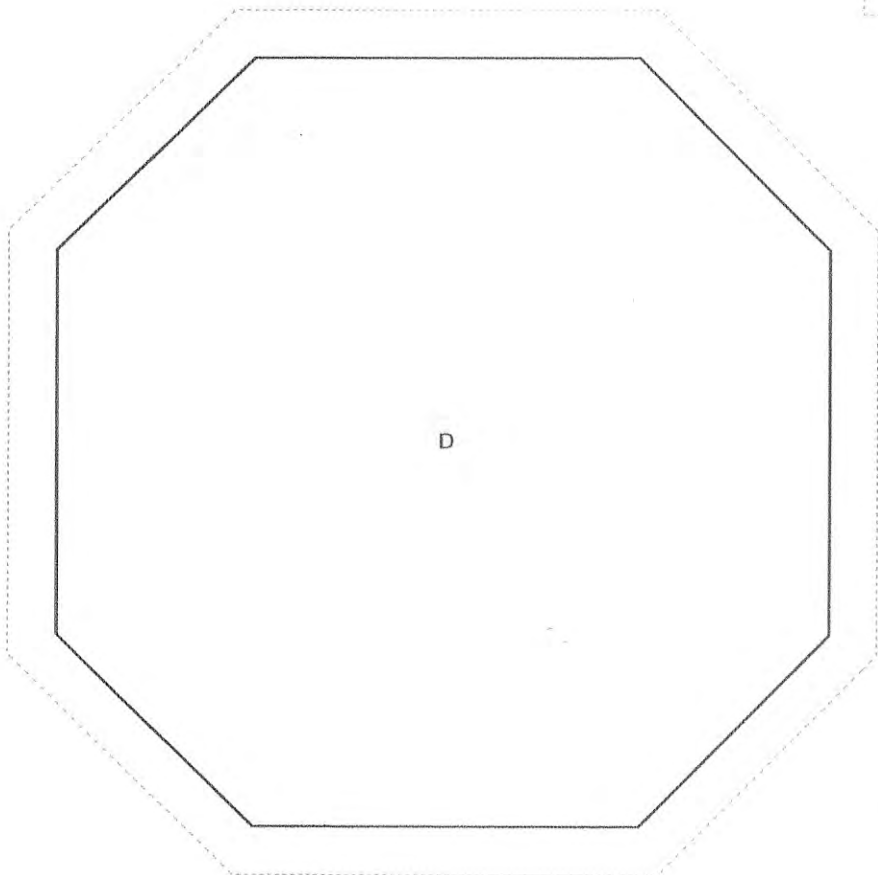
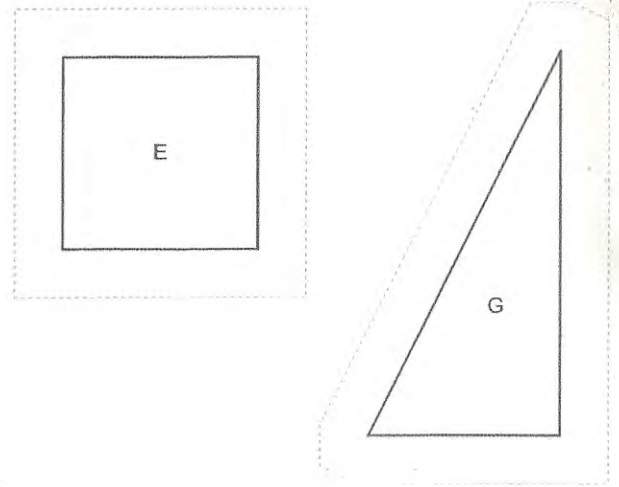
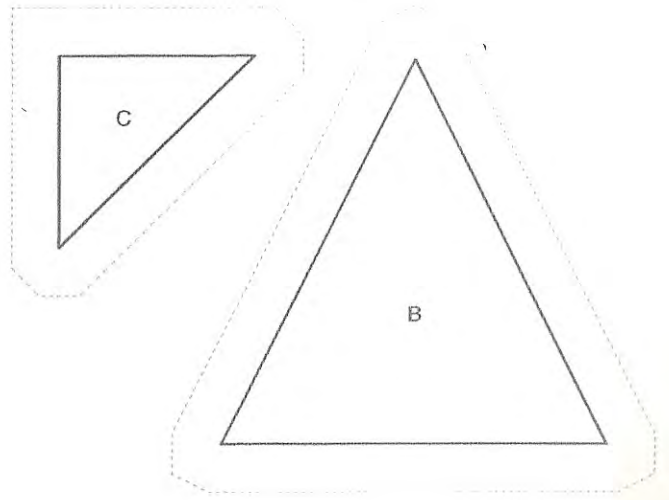
Sue's Prayer Block

Key Block (29/100 actual size)



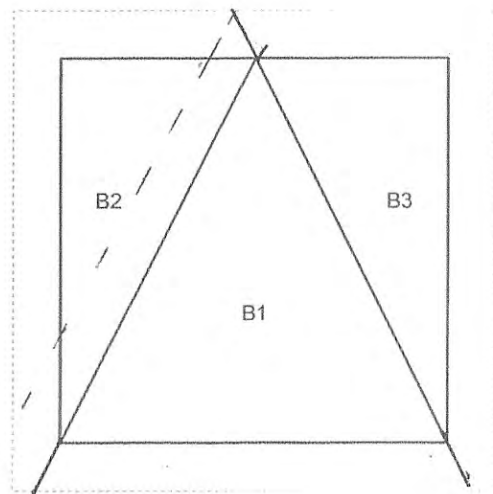
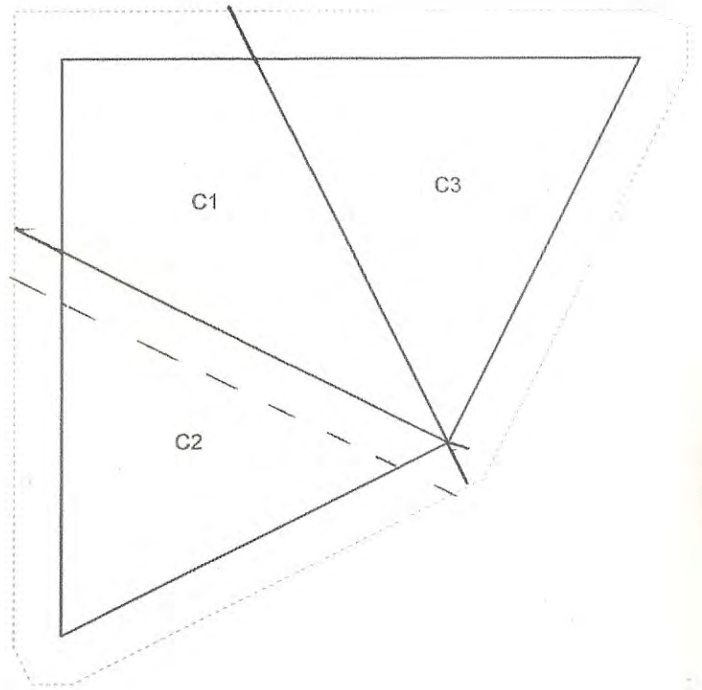
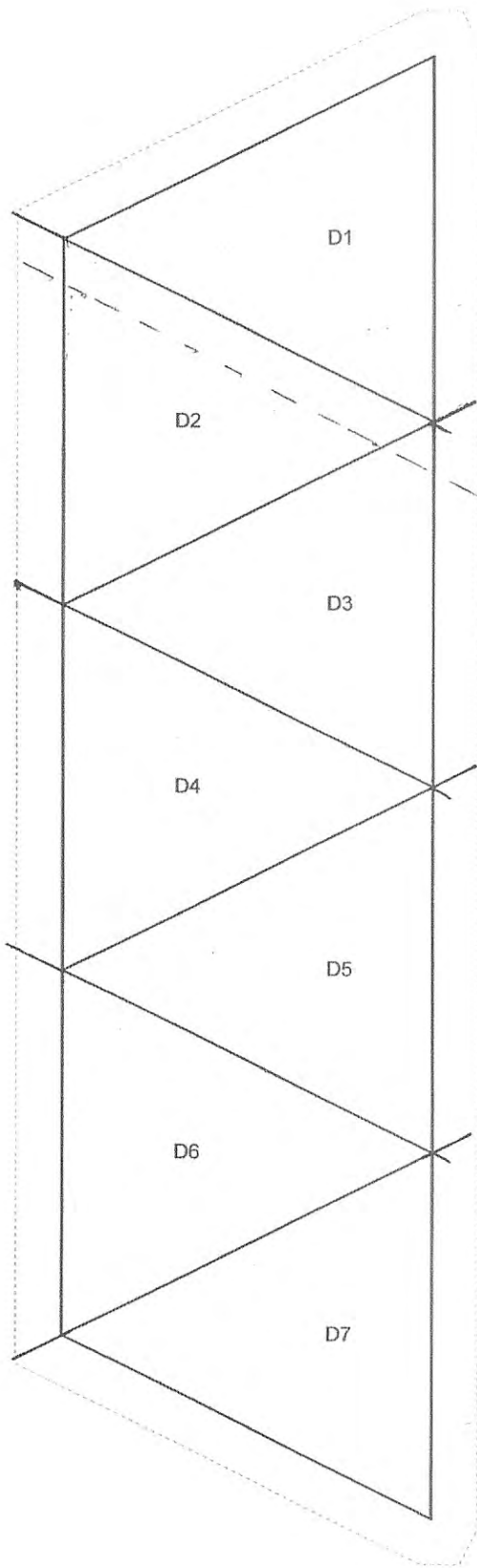
Templates for the 12" block

When doing the paper pieced sections, I use these templates cut slightly larger for the pieces needed.



Sue's Prayer Block

You will need 4 of each section per block.



Sue's Prayer Block

You will only need one per block

